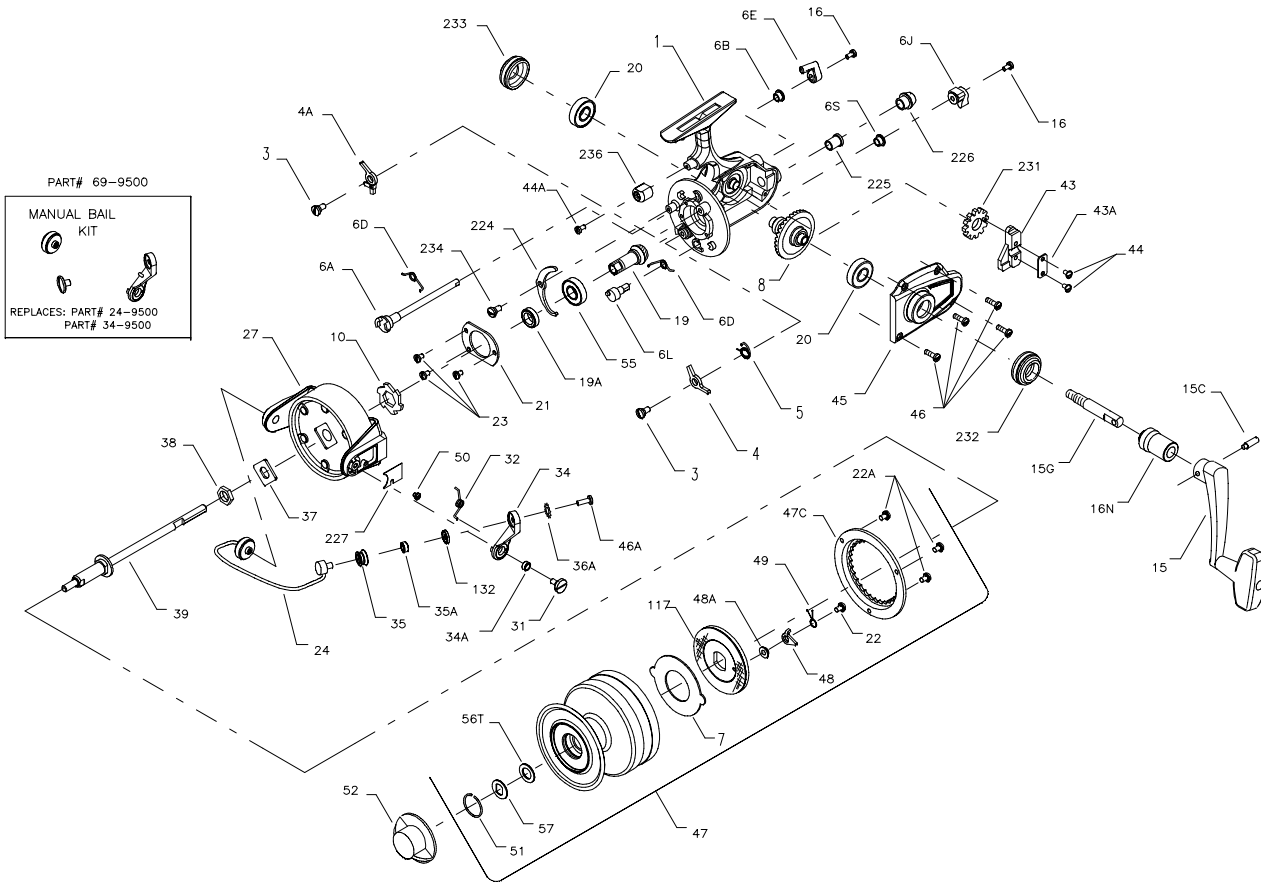




PARTS LIST FOR MODEL 9500SS



KEY NO.	DESCRIPTION	PART NO.
15	Handle	015 750
15C	Handle Pivot Screw	015C750
15G	Handle Pivot	015G9500
16	Eccentric Screw (2 req.)	016 910
16N	Collar	016 9500
19	Pinion	019N9500
19A	Pinion Spacer	019A9500
20	Ball Bearing (2 req.)	020 704
21	Bearing Cover	021 9500
22	Spool Click Screw	022 9500
22A	Drag Cover Screw (3 req.)	022A9500
23	Bearing Cover Screw (3 req.)	023 750
24	Bail Wire	024 9500
27	Rotor	027 9500
31	Bail Arm Screw	031 750
32	Bail Arm Spring	032 750
34	Bail Arm	034 9500
34A	Bail Arm Bushing	034A750
35	Line Roller	035 9500
35A	Line Roller Bearing	035A706
36A	Lock Washer	036A750
37	Rotor Washer	037 9500
38	Rotor Nut	038 9500
39	Spool Shaft	039 9500
43	Spool Block	043 9500
43A	Crosswind Block Plate	043A750
44	Crosswind Block Screw (2 req.)	044 750
44A	Trip Bumper Screw	044 750
45	Housing Cover	045 9500
46	Housing Cover Screw (4 req.)	046 9500
46A	Bail Stud Screw	046A9500
47	Spool (Complete)	047 9500
47C	Drag Cover	047C9500
48	Click Tongue	048 9500
48A	Click Tongue Washer	048A9500
49	Click Tongue Spring	049 9500
50	Bail Spring Cover Screw	050 712
51	Retaining Ring	051 704
52	Drag Knob	052 9500
55	Ball Bearing	055 50
56T	Drag Washer (Teflon®)	056T704
57	Drag Washer Keyed	057 704
69	Manual Bail Kit (Optional)	069 9500
117	Drag Washer/Drive Plate	117 9500
132	Roller Washer	132 706
224	Transfer Lever	224 750
225	Crosswind Shaft Bushing	225 9500
226	Bushing Cap Screw	226 9500
227	Bail Spring Cover	227 9500
231	Crosswind Gear	231 9500
232	Bearing Cover (Open)	232 750
233	Bearing Cover (Closed)	233 750
234	Transfer Lever Screw	234 750
236	Trip Bumper	236 750

KEY NO.	DESCRIPTION	PART NO.
1	Housing	001 9500
3	Dog Screw (2 req.)	003 750
4	Dog	004 750
4A	Silent Dog	004A750
5	Click Dog Spring	005 704
6A	Upper Eccentric	006A750
6B	Upper Eccentric Liner	006B750
6D	Eccentric Spring	006D710
6E	Anti-Reverse Lever	006E750
6J	Silent Dog Lever	006J750
6L	Silent Eccentric	006L750
6S	Silent Eccentric Liner	006B700Z
7	Metal Drag Washer	007 004FR
8	Main Gear	008N9500
10	Ratchet	010 9500