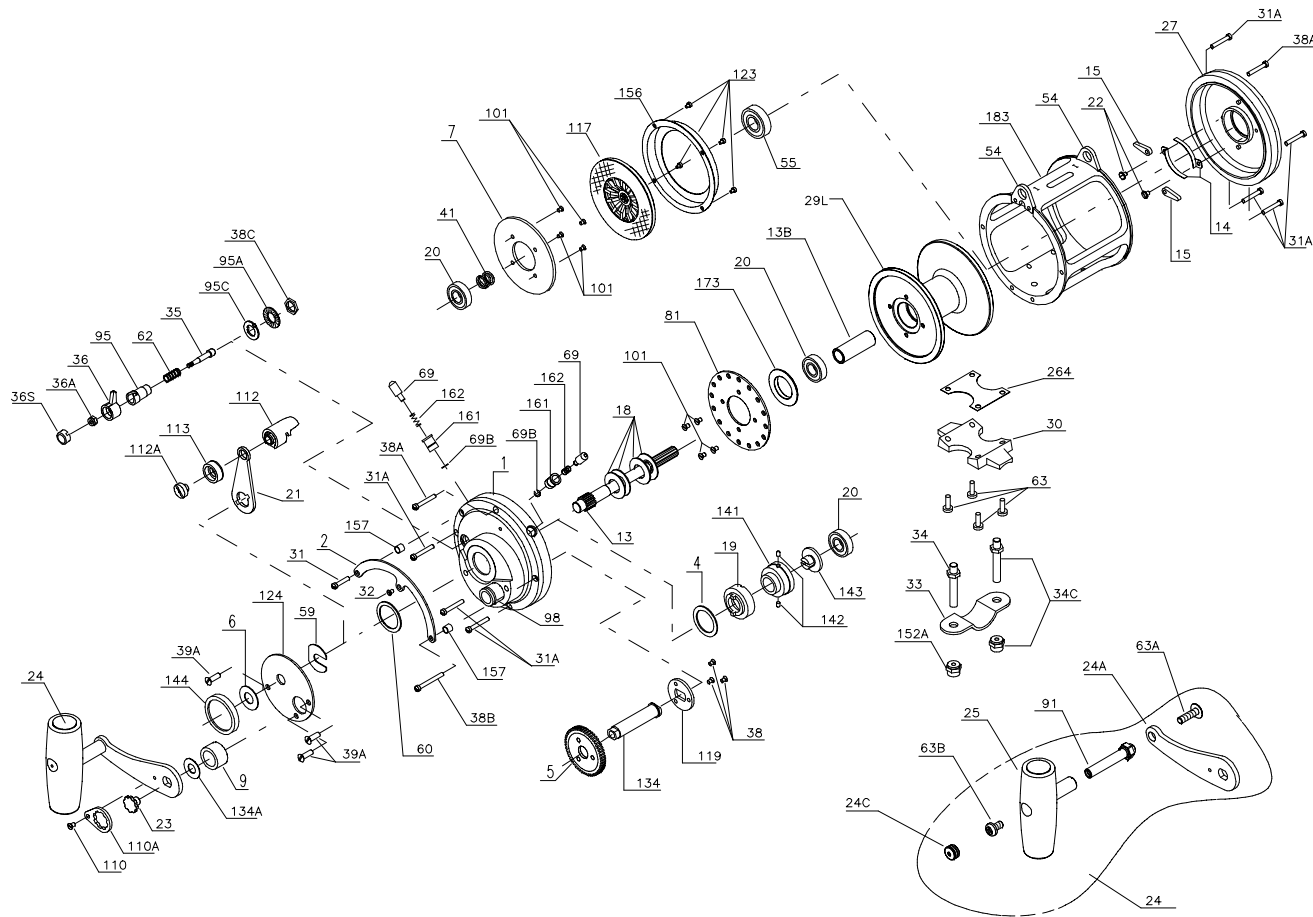




PARTS LIST FOR MODEL 30T AND 30TW



KEY NO.	30T PART NO.	30TW PART NO.	DESCRIPTION
21	021 030	021 030	Eccentric Lever
22	022 109	022 109	Dog Spring Screw (2 req.)
23	023 114	023 114	Handle Screw
24	024 030TW	024 030TW	Handle Complete
24A	024 030TW-1	024 030TW-1	Handle Blank Only
24C	024C050	024C050	Handle Knob Cap
25	025 050	025 050	Handle Knob Assembly
27	027 030T	027 030T	L.S. Plate Assembly
29L	029L030T	029L 030TW	Spool
30	030 020T	030 020T	Stand
31	031T020	031T020	Short Quadrant Screw
31A	031T080	031T080	Frame Screw (7 req.)
32	032T020	032T020	Center Quadrant Screw
33	033 990	033 114	Rod Clamp
34	034 50T	034 50T	Clamp Screw (Only)
34C	034C050T	034C050T	Rod Clamp Screw w/Nut
35	035 050N	035 050N	Click Tongue
36	036N050	036N050	Click Button
36A	036 700	036 700	Click Button Nut
36S	036S080ST	036S080ST	Click Button Cap
38	038N007	038N007	Coupling Plate Screw (3 req.)
38A	038T050	038T050	Frame Screw (2 req.)
38B	038T080	038T080	Long Quadrant Screw
38C	038 710	038 710	Click Bushing Nut
39A	039A080S	039A080S	Cover Screw (3 req.)
41	041 050	41-50	L.S. Bearing Spring
*	046A704	046A704	Cam Housing Screw
54	054 030T	054 030T	Harness Lug (2 req.)
55	055 080	055 080	L.S. Bearing
59	059 050	059 050	Slotted Washer
60	060 050	060 050	Backing Washer
62	062 050	062 050	Click Spring
63	063 030T	063 030T	Stand Screws (4 req.)
63A	063A050	063A050	Screw
63B	063 050	063 050	Screw
69	069 050	069 050	Locating Pin (2 req.)
69B	069B050	069B050	Retaining Ring (2 req.)
81	081 050	081 050	Ratchet
91	091N050	091N050	Handle Rivet
95	095 050	095 050	Click Tongue Bushing
95A	095A020	095A020	Click Bushing Washer
95C	095A050	095A050	Click Bushing Washer
98	098 030TN	098 030TN	Bridge Bushing
101	101 030	101 030	Drive Plate Screw (8 req.)
110	110 050	110 050	Handle Lock Screw
110A	110A050	110A050	Handle Locking Plate
112	112 050	112 050	Eccentric Lever Knob
112A	112A050	112A050	Eccentric Knob Screw
113	113 050	113 050	Eccentric Lever Cap
117	117D030	117D030	Drive Plate w/ Drag Washer
119	119 050	119 050	Coupling Plate
123	123 050	123 050	Drag Cover Screw (4 req.)
124	124 030	124 030	Bridge Cover
*	125 030	125 030	Cam Housing
134	134 050	134 050	Gear Stud
134A	134A050	134A050	Gear Stud Washer
141	141 030	141 030	Cam Follower
142	142 050	142 050	Cam Follower Pin (2 req.)
143	143 030	143 030	Adjusting Screw
144	144 050	144 050	Preset Knob
152A	152A050T	152A050T	Rod Clamp Acorn Nut (2 req.)
156	156 030T	156 030T	Drag Cover
157	157 050	157 050	Quadrant Spacer Bushing (2 req.)
161	161 050	161 050	Locating Pin Bushing (2 req.)
162	162 050	162 050	Locating Pin Spring (2 req.)
173	173 030T	173 030T	Spool Bushing
183	183 030T	183 030T	Tube Frame
264	264 030T	264 030T	Stand Gasket

KEY NO.	30T PART NO.	30TW PART NO.	DESCRIPTION
1	001 030TN	001 030TN	Right Side Plate Assembly
2	002 030	002 030	Quadrant Ring
4	004 030	004 030	Cam Thrust Washer
5	005 050	005 050W	Main Gear
6	006 155	006 155	Spacer Washer
7	007 030	007 030	Metal Drag Washer
9	009 030	009 030	Spacer Sleeve
13	013 030	013 030TW	Pinion Gear
13B	013B30T	013B30TW	Spool Sleeve
14	014 050	014 050	Dog Spring (2 req.)
15	015 050	015 050	Dog (2 req.)
18	018 030	018 030	Disc Clutch Spring (4 req.)
19	019 030W	019 030W	Eccentric Cam
20	020L704	020L704	Ball Bearing (3 req.)

407-30T rev 4 10/9/02

*Not Shown