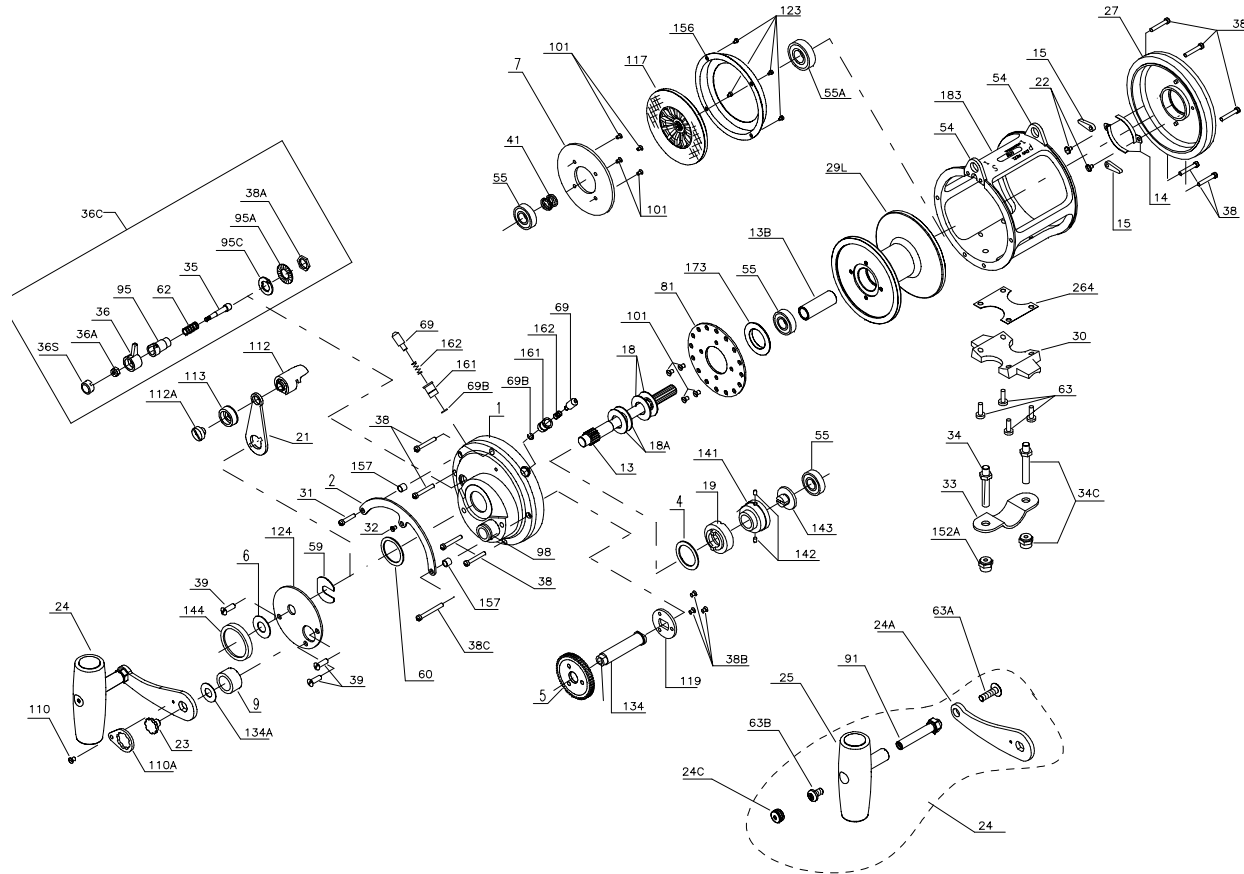




PARTS LIST FOR MODEL 50T AND 50TW



KEY NO.	50T PART NO.	50TW PART NO.	DESCRIPTION
21	021 050	021 050	Eccentric Cam Lever
22	022 109	022 109	Dog Spring Screw (2 req.)
23	023 114	023 114	Handle Screw
24	024 050T	024 050T	Handle
24A	024 050T-1	024 050T-1	Handle Blank Only
24C	024C050	024C050	Handle Knob Cap
25	025 050	025 050	Handle Knob
27	027 050T	027 050T	L.S. Plate
29L	029L050T	029L050TW	Spool
30	030 050T	030 050T	Stand
31	031T020	031T020	Short Quadrant Screw
32	032T020	032T020	Center Quadrant Screw
33	033 114	033 114	Rod Clamp
	*033R114	*033R114	Ringed Rod Clamp (Optional)
34	034 050T	034 050T	Clamp Screws (2 req.)
34C	034C050T	034C050T	Rod Clamp Screw w/Nut
35	035 050N	035 050N	Click Tongue
36	036N050	036N050	Click Button
36A	036 700	036 700	Click Tongue Nut
36C	036C050	036C050	Click Assembly
36S	036S080ST	036S080ST	Click Button Cap
38	038T050	038T050	Frame Screw (9 req.)
38A	038 710	038 710	Click Bushing Nut
38B	038N007	038N007	Coupling Plate Screw (3 req.)
38C	038T080	038T080	Long Quadrant Screw
39	039A080S	039A080S	Bridge Cover Screw (3 req.)
41	041 050	041 050	L.S. Bearing Spring
*	046A704	046A704	Cam Housing Screw (2 req.)
54	054 050T	054 050T	Harness Lugs (2 req.)
55	055 050	055 050	Spool Bearings (3 req.)
55A	055 080	055 080	L.S. Bearing
59	059 050	059 050	Slotted Washer
60	060 050	060 050	Backing Washer
62	062 050	062 050	Click Spring
63	063 030T	063 030T	Stand Screw (4 req.)
63A	063A050	063A050	Long Screw
63B	063 050	063 050	Screw
69	069 050	069 050	Locating Pins (2 req.)
69B	069B050	069B050	Retaining Rings (2 req.)
81	081 050	081 050	Ratchet
91	091N050	091N050	Handle Rivet
95	095 050	095 050	Click Bushing
95A	095A020	095A020	Click Bushing Washer
95C	095A050	095A050	Click bushing Washer
98	098 050TN	098 050TN	Bridge Bushing
101	101 030	101 030	Drive Plate Screws (8 req.)
110	110 050	110 050	Handle Lock Screw
110A	110A050	110A050	Handle Locking Plate
112	112 050	112 050	Eccentric Lever Knob
112A	112A050	112A050	Eccentric Knob Screw
113	113 050	113 050	Eccentric Lever Cap
117	117D050	117D050	Drive Plate w/ Drag Washer
119	119 050	119 050	Main Gear Plate
123	123 050	123 050	Drag Cover Screws (4 req.)
124	124 050	124 050	Bridge Cover
*	125 050	125 050	Cam Housing
134	134 050	134 050	Gear Stud
134A	134A050	134A050	Gear Stud Washer
141	141 050	141 050	Cam Follower
142	142 050	142 050	Cam Follower Pins (2 req.)
143	143 050	143 050	Adjusting Screw
144	144 050	144 050	Preset Knob
152A	152A050T	152A050T	Rod Clamp Acorn Nuts (2 req.)
156	156 050	156 050	Drag Cover
157	157 050	157 050	Quadrant Bushing (2 req.)
161	161 050	161 050	Locating Pin Bushing (2 req.)
162	162 050	162 050	Locating Pin Springs (2 req.)
173	173 050T	173 050T	Spool Bushing
183	183 050T	183 050T	Tube Frame
264	264 030T	264 030T	Stand Gasket

KEY NO.	50T PART NO.	50TW PART NO.	DESCRIPTION
1	001 050TN	001 50TN	R.S. Plate Assembly
2	002 050	002 050	Quadrant Ring
4	004 050	004 050	Cam Thrust Washer
5	005 050	005 050W	Main Gear
6	006 155	006 155	Spacer Washer
7	007 050	007 050	Metal Drag Washer
9	009 030	009 030	Spacing Sleeve
13	013 50	013 050W	Pinion Gear
13B	013B50T	013B50TW	Spool Sleeve
14	014 050	014 050	Dog Spring (2 req.)
15	015 050	015 050	Dog (2 req.)
18	018 050W	018 050W	Disc Springs (2 req.)
18A	018 050TW	018 050TW	Disc Springs (2 req.)
19	019 050W	019 050W	Eccentric Cam