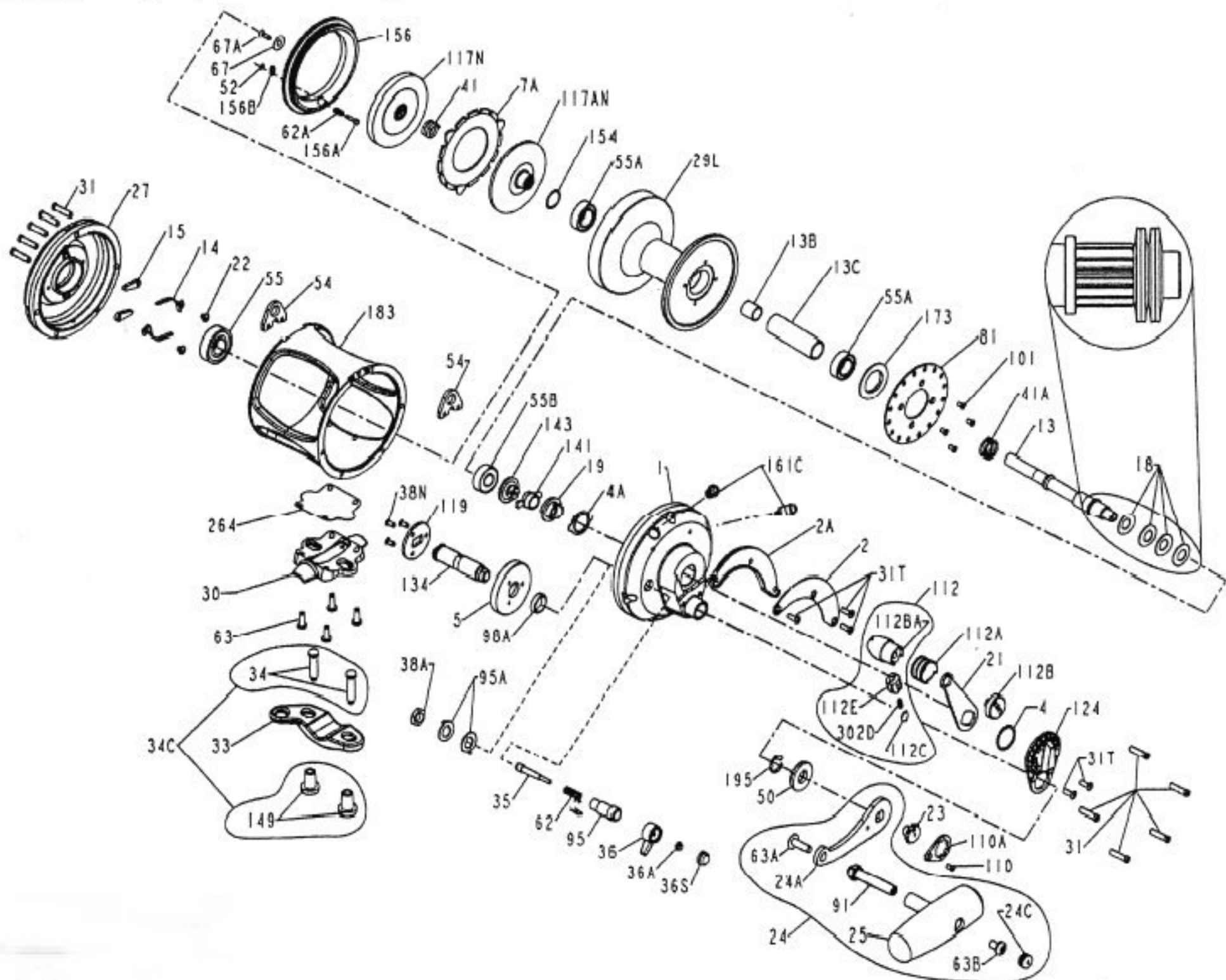




**Penn 30VW International V
Single Speed - Lever Drag**



Penn Reel Parts list for:

KEY PART NO.	NO.	DESCRIPTION
1	1-30VS	RIGHT SIDE PLATE ASSEMBLY
2	2-30VS	QUADRANT RING
2A	2A-30VS	QUADRANT SPACER
4	4-12LT	CAM THRUST WASHER
4A	4-30VS	CAM BUSHING
5	5-30VW	MAIN GEAR
7A	7A-30VS	METAL DRAG WASHER
13	13-30VW	PINION GEAR
13B	13B-70	PINION GEAR SLEEVE
13C	13B-30VSW	SPOOL SLEEVE
14	14-50	DOG SPRING (2 REQUIRED)
15	15-50	DOG (2 REQUIRED)
18	18-30	DISC CLUTCH SPRING (4 REQUIRED)
19	19-30VS	ECCENTRIC CAM
21	21-30VS	ECCENTRIC LEVER
22	22-109	DOG SPRING SCREW (2 REQUIRED)
23	23-114	HANDLE SCREW (2 REQUIRED)
24	24N-30TW	HANDLE COMPLETE
24C	24C-50M	HANDLE KNOB CAP
25	25-50M	HANDLE KNOB
27	27-30VW	L.S. PLATE ASSEMBLY
29L	29L-30VSW	SPOOL
30	30-30VS	STAND
31	31T-70	SHORT SCREW (5 REQUIRED)
31T	31T-80	SIDE PLATE SCREW (10 REQUIRED)
33	33-70	ROD CLAMP
34	34-70	CLAMP SCREW (2 REQUIRED)
34C	34C-70	ROD CLAMP SCREW W/NUT
35	35-70	CLICK TONGUE
36	36N-50	CLICK BUTTON
36A	36-700	CLICK BUTTON NUT
36S	36S-80ST	CLICK BUTTON CAP
38A	38-710	CLICK BUSHING NUT
38N	38N-7	SCREW (3 REQUIRED)
41	41-2.5FR	BEARING SPRING
41A	41-70	DRAG SPRING
50	50-30VW	SHIELD
52	52-910	RETAINING RING
54	54-30T	HARNES LUG (2 REQUIRED)
55	55-80	BALL BEARING
55A	55-80ST	BALL BEARING (2 REQUIRED)
55B	20-704	BALL BEARING

Model: 30VW

KEY PART NO.	NO.	DESCRIPTION
62	62-50	CLICK SPRING
62A	62-545	CLICK SPRING
63	63-30T	STAND SCREWS (4 REQUIRED)
63A	63A-50	SCREW
63B	63-50	SCREW
67	67-70	PINION GEAR WASHER
67A	67A-70	PLATE SCREW
81	81-50	RATCHET
91	91N-50	HANDLE RIVET
95	95-70	CLICK TONGUE BUSHING
95C	95A-50	CLICK BUSHING WASHER
98A	98A-30VW	GEAR STUD SPACER
101	101-30	RATCHET PLATE SCREW (4 REQUIRED)
110	110-50	SCREW
110A	110A-50	LOCKING PLATE
112	112-30VS	ECCENTRIC LEVER KNOB ASSEMBLY
112A	112A-30VS	KNOB SLEEVE
112B	112B-70	ECCENTRIC KNOB SCREW
112C	112C-30VS	DRAG CLICK PLATE
112E	112E-30VWS	CLICK PLATE HOUSING
117A	117AN-50S	DRIVE PLATE W/ DRAG WASHER
117D	117N-50S	DRIVE PLATE W/ DRAG WASHER
119	119-50	COUPLING PLATE
124	124L-30VS	BRIDGE COVER ASSEMBLY
134	134-30VW	GEAR STUD
141	141-30VS	CAM FOLLOWER
143	143-16VS	PRESET SCREW
149	149-70	ROD CLAMP NUT (2 REQUIRED)
154	154-80	INNER DRAG PLATE SHIM
156	156-30VS	DRAG COVER
156A	156A-30VS	LOCK PIN
156B	156B-30VS	LOCK PLATE
161	161-30VS	LOCATING PIN BUSHING (2 REQUIRED)
173B	173-50VS	BEARING RETAINER
183	183N-30VW	TUBE FRAME
195	195-40	RETAINING RING (2 REQUIRED)
264	264-30VS	STAND GASKET
302D	302D-525MAG	MAGNET SPRING (2 REQUIRED)

International V Single Speed