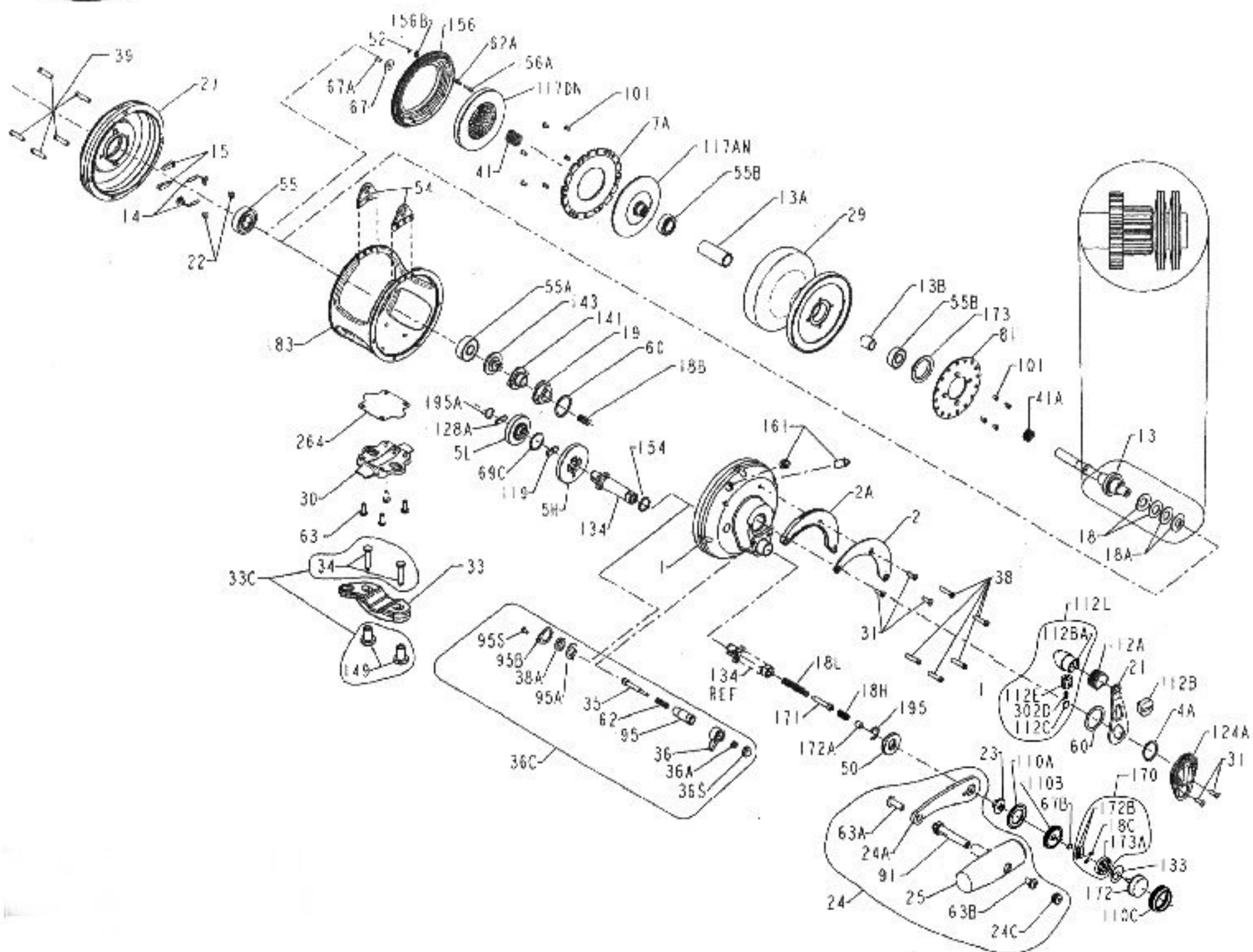




PARTS LIST FOR MODEL 50VSX



Penn Reel Parts list for:

KEY PART NO. NO.	DESCRIPTION
1	11N-50VS RIGHT SIDE PLATE ASSEMBLY
2	2-50VS QUADRANT RING
2A	2A-50VS QUADRANT RATCHET/SPACER
4A	4-12LT TEFLON THRUST WASHER
5H	5H-50VS-HS MAIN GEAR HIGH-SPEED
5L	5L-50VS-LS MAIN GEAR LOW-SPEED
7A	7A-50VS METAL DRAG WASHER
13	13-50VSX PINION GEAR
13A	13A-50VSX SPOOL SLEEVE
13B	13B-70 PINION GEAR SLEEVE
14	14-50 DOG SPRING (2 REQ.)
16	16-50 DOG (2 REQ.)
18	18-50TW DISC CLUTCH SPRING (2 REQ.)
18A	18A-50W DISC CLUTCH SPRING (2 REQ.)
18B	18-349 SPRING
18C	18C-15KG SHIFT BUTTON SPRING (2 REQ.)
18H	18H-30VS SHIFT SPRING (HEAVY)
18L	18L-30VS SHIFT SPRING (LIGHT)
19	19-50VS ECCENTRIC CAM
21	21-50VS ECCENTRIC LEVER
22	22-109 DOG SPRING SCREW
23	23-30VS HANDLE SCREW (2 REQ.)
24	24-30VS HANDLE COMPLETE
24A	24-30VS-1 HANDLE METAL BLANK ONLY (NO KNOB)
24C	24C-50M HANDLE KNOB CAP
25	25-50M HANDLE KNOB
27	27N-50VS L.S. PLATE ASSEMBLY
29L	29N-50VSX SPOOL
30	30-50VS STAND
31	31T-70 SHORT SCREW (5 REQ.)
33	33-70 ROD CLAMP
33C	33C-70VS ROD CLAMP KIT W/ALL STUDS/NUTS
34	34-70VS CLAMP SCREW (2 REQ.)
34C	34C-70VS ROD CLAMP SCREW W/NUT
35	35-70 CLICK TONGUE
36	36N-50 CLICK BUTTON
36C	36C-50VSW CLICKER ASSEMBLY
36A	36-700 CLICK BUTTON NUT
36S	36S-80ST CLICK BUTTON CAP
36	36-50VSX RIGHT SIDE PLATE SCREW (5 REQ.)
36A	36-710 CLICK BUSHING NUT
39	39-50VSX LEFT SIDE PLATE SCREW (5 REQ.)
41	41-50 BEARING SPRING
41A	41-70 DRAG SPRING
50	50-50VS GEAR STUD SHIELD
52	52-910 RETAINING RING
54	54-50VSX HARNESS LUG (2 REQ.)
*54A	54A-50VSX HARNESS LUG PLUG (2 REQ.)
55	55-80 BALL BEARING
55A	55-50 BALL BEARING
55B	55-80ST BALL BEARING (2 REQ.)
60	60-50 DRAG THRUST WASHER (OLD #4-70)
62	62-50 CLICK SPRING
62A	62A-54S DRAG COVER LOCK SPRING

Model: 50VSX

KEY NO.	FART NO.	DESCRIPTION
63	63-30T	STAND SCREWS (4 REQ.)
63A	63A-50	HANDLE RIVET SCREW
63B	63-50	HANDLE KNOB SCREW
67	67-70	PINION RETAINING WASHER
67A	67A-70	PINION RETAINING SCREW
67B	67-30VS	SHIFTER RETAINING RING
69C	69C-245	H/L GEAR RETAINING RING
81	81-50	RATCHET DISC PLATE
91	91N-50	HANDLE RIVET
95	95-70	CLICK TONGUE BUSHING
95A	95A-50	CLICK BUSHING WASHER
95B	95B-70	CLICK RETAINING PLATE
95S	46A-704	CLICK RETAINING PLATE SCREW
101	101-30	RATCHET PLATE SCREW (10 REQ.)
110A	110A-30VS	HANDLE LOCKING PLATE
110B	110B-30VS	SHIFT HOUSING
110C	110C-30VS	SHIFTER BUTTON RETAINING RING
112L	112-30VS	DRAG LEVER KNOB ASSEMBLY
112	112B-30VS	DRAG LEVER KNOB
112A	112A-30VS	KNOB SLEEVE
112B	112B-70	DRAG KNOB SCREW
112C	112C-30VS	DRAG CLICK PLATE
112E	112E-30VS	DRAG LEVER CLICK PLATE HOUSING
117A	117AN-70	INNER DRIVE PLATE ASSEMBLY
117D	117DN-70VS	DRIVE PLATE ASSEMBLY
119	119-24KG	COUPLING PLATE
124A	124L-50VS	BRIDGE COVER ASSEMBLY
*128	128-50S	LOW GEAR PINS (6 REQ.)
128A	128A-24KG	LOW GEAR DRIVE PLATE
133	133-30VS	SHIFTER RETAINING PLATE
134	134N-50VS	GEAR STUD
141	141-50VS	CAM FOLLOWER
143	143-50VS	PRESET SCREW
149	149-70	ROD CLAMP NUT (2 REQ.)
154	154-60	GEAR STUD SHIM
156	156N-50VS	DRAG COVER
156A	156A-30VS	LOCK PIN
156B	156B-30VS	LOCK PLATE
161	161C-30VS	DRAG LOCATING PIN ASSEMBLY (2 REQ.)
*162	162-50	LOCATING PIN SPRING (2 REQ.)
170	170-30VS	SHIFTER CATCH HOLDER ASSEMBLY
171	171-30VS	SHIFT PLUNGER (SCREW)
172	172-30VS	SHIFT BUTTON (LOW)
172A	172A-50VS	SHIFTER SPACER
172B	173-30VS	SHIFTER CATCH PLATE (2 REQ.)
173	173-50VS	SPOOL BUSHING
173A	173A-30VS	SHIFTER CATCH HOLDER
183	183N-50VS	TUBE FRAME W/ DOWN PINS
195	195-40	RETAINING RING
195A	195-24KG	SPRAL RETAINING RING
264	264-30VS	STAND GASKET
302D	302D-52SMAG	DRAG CLICK PLATE SPRING

*NOT SHOWN