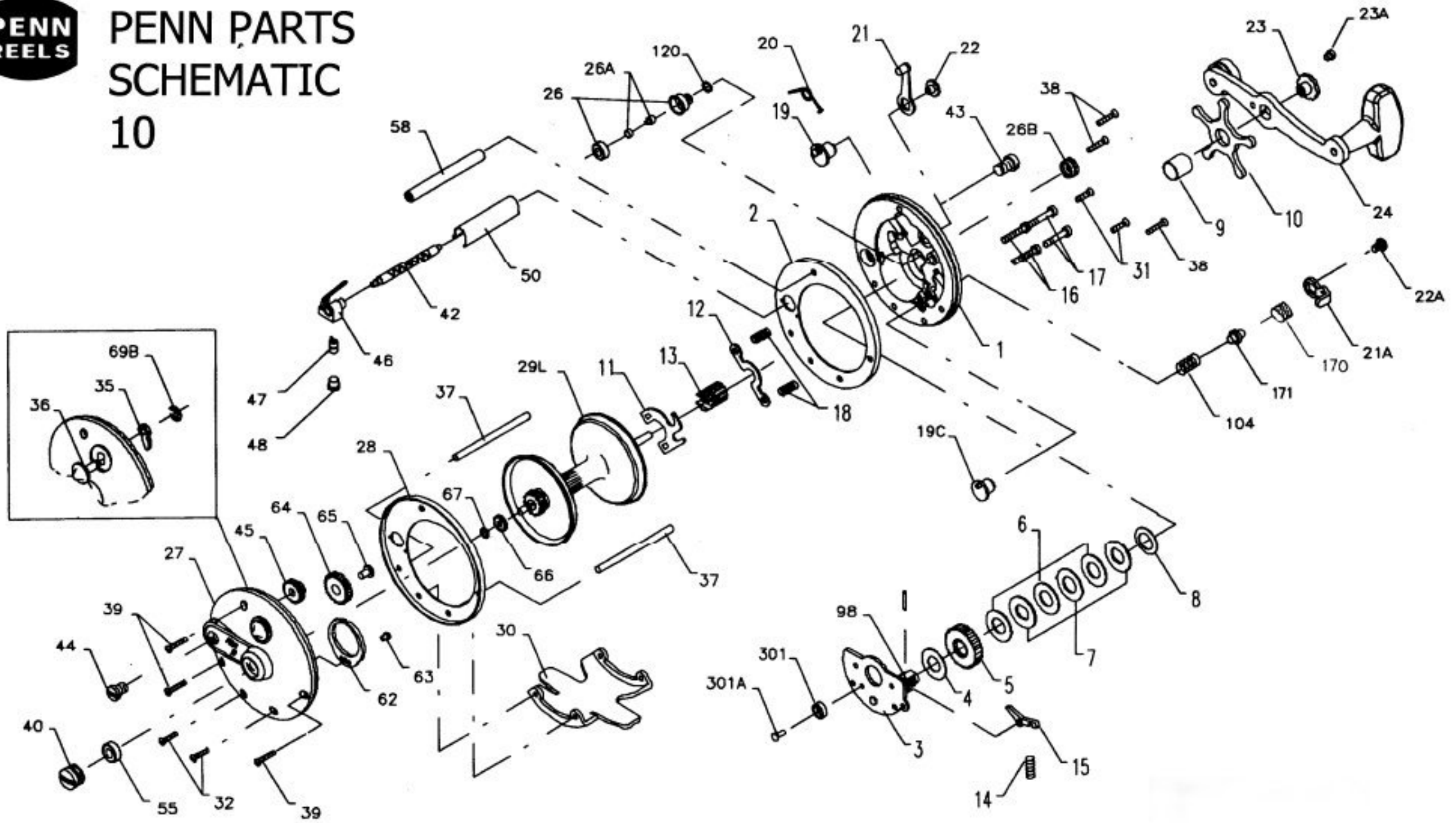




PENN PARTS SCHEMATIC 10



Penn Reel Parts list for:

KEY PART

NO NO.	DESCRIPTION
1 1-10	R.S. PLATE
2 2-10	R.S. RING
3 3-10	BRIDGE W/ SLEEVE
4 4-155	FIBER WASHER
5 5N-10	MAIN GEAR
6 6-60	DRAG WASHER
7 7C-60	METAL DRAG WASHER (SET)
8 8-60	TENSION SPRING
9 9-60	SPACING SLEEVE
10 10-60	STAR DRAG
11 11-9	ECCENTRIC JACK
12 12-9	PINION YOKE
13 13N-10	PINION GEAR
14 14-10	DOG SPRING
15 15-10	DOG
16 16-9	LOWER BRIDGE SCREW (2 REQ.)
17 17-9	UPPER BRIDGE SCREW (2 REQ.)
18 18-9	CLUTCH SPRING (2 REQ.)
19 19-9	ECCENTRIC
19C 19C-10	DIRECT DRIVE ECCENTRIC
20 20-109	ECCENTRIC SPRING
21 21-109	ECCENTRIC LEVER
21A 21-10	DIRECT DRIVE LEVER
22 22-109	ECCENTRIC SCREW
22A 22-109	DIRECT LEVER SCREW
23 23-60	HANDLE SCREW
23A 110-60	HANDLE LOCK SCREW
24 24-155	HANDLE
26 26-10	R.S. BEARING
26A 40A-910	PRESSURE PLUG
26B 26B-910	R.S. BEARING CAP
27 27-10	L.S. PLATE ASSEMBLY
28 28-10	L.S. RING
29L 29L-10	SPOOL (ALUMINUM)

Model:10

KEY PART

NO NO.	DESCRIPTION
30 30-10	STAND
31 31-10	R.S. STAND SCREW (2 REQ.)
32 32-2	L.S. STAND SCREW (2 REQ.)
34C 34C-45	ROD CLAMP SCREW W/ NUTS
35 35-155	CLICK TONGUE
36 36-60CH	CLICK BUTTON
37 37-10	FRAME POST (REQ.)
38 38-10	R.S. POST SCREW (3 REQ.)
39 39-1	L.S. POST SCREW (3 REQ.)
40 40-210	L.S. BEARING CAP ONLY
42 42-109	WORM
43 43-9	R.S. WORM BEARING
45 45-9	WORM GEAR
46 46-9	LINE GUIDE
47 47-109	PAWL
48 48-109	PAWL COVER
50 50-109	WORM SHIELD
55 55-113H	SPOOL BEARING
58 58-109	SLOTTED POST
62 62-209	CLICK SPRING
63 63-209	CLICK SPRING SCREW
64 64-9	IDLER GEAR
65 65-209	IDLER GEAR SCREW
66 66-9	LEVEL WIND DRIVE GEAR
67 67-9	DRIVE GEAR LOCK SPRING
69B 69B-600	CLICK BUTTON RETAINING RING
98 98-155	GEAR SLEEVE
104 104-10	DIRECT DRIVE SPRING
120 120-910	O' RING
149 149-45	CLAMP NUT
149A 149-200	HEX NUT
170 170-140	PRESSED IN COLLAR
171 171-140	DIRECT DRIVE PLUNGER
301 301-10	MAGNET
301A 301A-10	MAGNET STUD