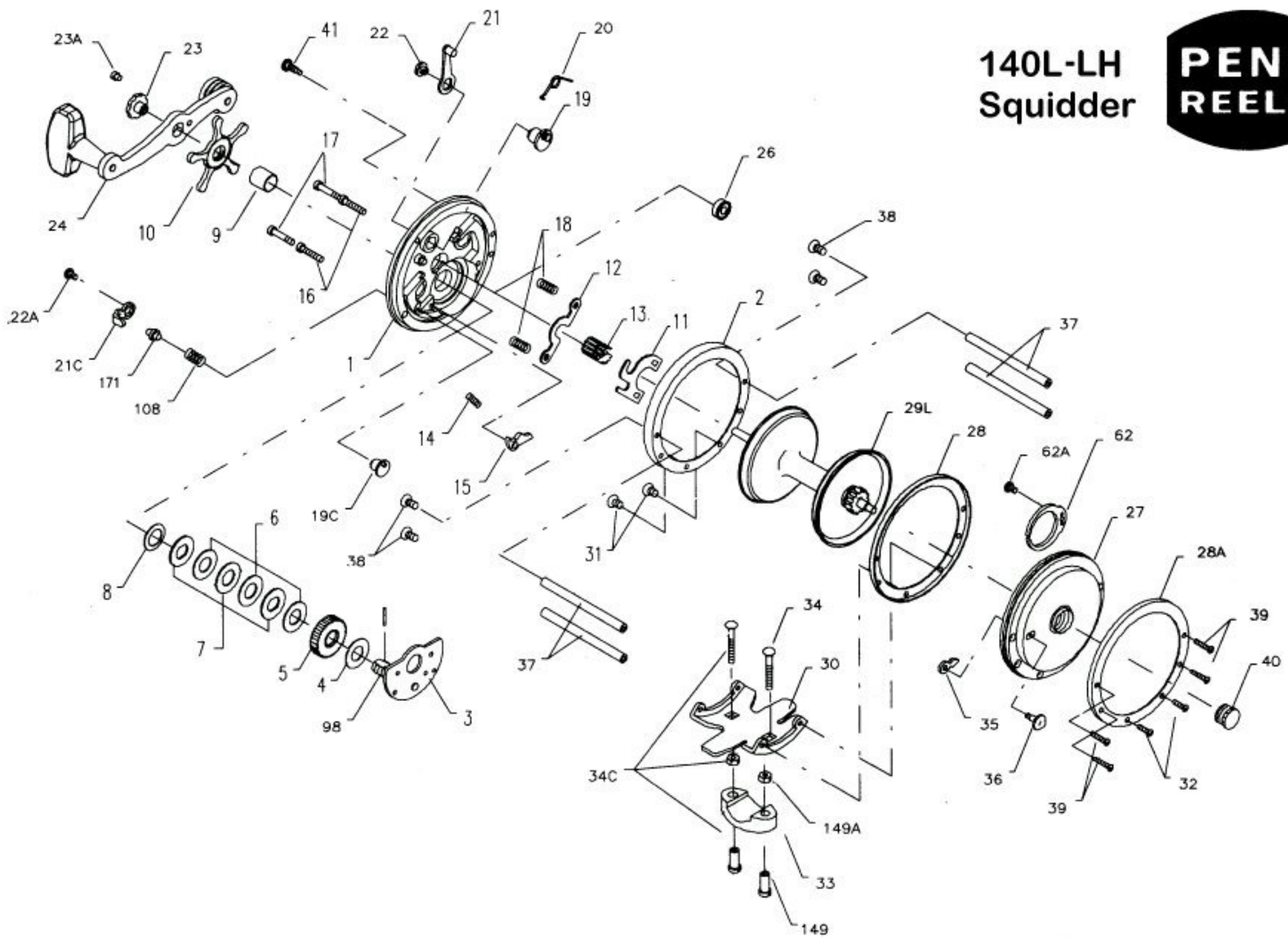


# 140L-LH Squidder

**PENN  
REELS**



## Penn Reel Parts list for:

## Model: 140L-LH Leftlander

KEY NO	PART NO.	DESCRIPTION
1	1-140LH	LEFT SIDE PLATE
2	2-200	L.S. RING
3	3-200LH	BRIDGE W/ SLEEVE
4	4-155	FIBER WASHER
5	5-60LH	MAIN GEAR
6	6-60	DRAG WASHER (3 REQ.)
7	7C-60	METAL WASHER SET
8	8-60	TENSION SPRING
9	9-60	SPACING SLEEVE
10	10-140LH	STAR DRAG WHEEL
11	11-200	ECCENTRIC JACK
12	12-155	PINION YOKE
13	13-140LH	PINION
14	14C-140	DOG SPRING
15	15-140LH	DOG
16	16-60CH	LOWER BRIDGE SCREW
17	17-60CH	UPPER BRIDGE SCREW
18	18-60	CLUTCH SPRING (2 REQ.)
19	19-200	ECCENTRIC
19C	19-140S	ECCENTRIC
20	20-155LH	ECCENTRIC SPRING
21	21-200	ECCENTRIC LEVER
21C	21-140s	ECCENTRIC LEVER
22	22-99	ECCENTRIC SCREW
22A	22-109	ECCENTRIC SCREW
23	23-60	HANDLE SCREW
23A	110-60	HANDLE LOCK SCREW
24	24-155	HANDLE

KEY NO	PART NO.	DESCRIPTION
26	26-140	L.S. BEARING
27	27-140	Right SIDE PLATE
28A	28-140-0	OUTER RIGHT SIDE RING
28	2-155	INNER RIGHT SIDE RING
29L	29L-140	SPOOL
30	30-200	STAND
31	31-19	STAND SCREW (L.S.)
32	32-18	STAND SCREW (R.S.)
33	33-113	ROD CLAMP
*	33R-200	RINGED CLAMP (OPTIONAL)
34	34-45	CLAMP SCREW (2 REQ.)
34C	34C-45	ROD CLAMP SCREW W/ NUTS
35	35-155	CLICK TOUNGE
36	36-155CH	CLICK BUTTON
37	37-67	FRAME POST
38	38-7	L.S. POST SCREW
39	39-9	R.S. POST SCREW
40	40-140	R.S. BEARING
41	129-200	TAKE APART THUMB SCREW
62	62-309	CLICK SPRING
62A	63-209	CLICK SPRING SCREW
98	98-155	GEAR SLEEVE
108	108-140	LEVER SPRING
149	149-45	CLAMP NUT (2 REQ.)
149A	149-200	HEX NUT (2 REQ.)
171	171-140	ECCENTRIC PUNGER

\* Not Shown