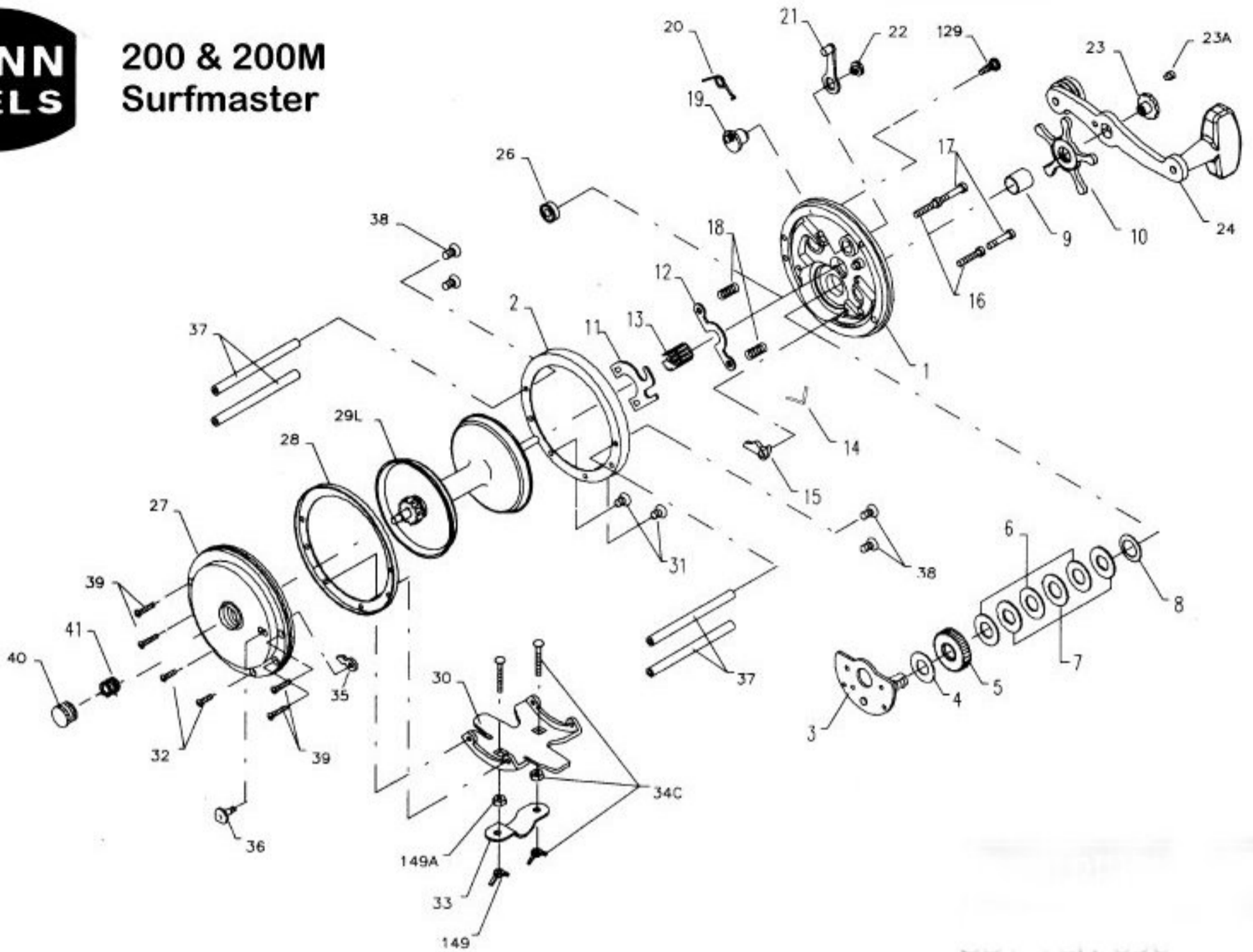
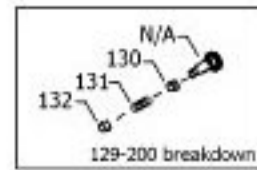




# 200 & 200M Surfmaster



## Penn Reel Parts list for:

## Model: 200M SURFMASTER

KEY NO	PART NO.	DESCRIPTION	KEY NO	PART NO.	DESCRIPTION
1	1N-200	RIGHT SIDE PLATE	23A	110-60	HANDLE LOCK SCREW
2	2-200	R.S. RING	24	24-155	HANDLE
3	3-200	BRIDGE W/ SLEEVE	26	26-155	R.S. BEARING
4	4-155	FIBER WASHER	27	27-200	LEFT SIDE PLATE
5	5-60	MAIN GEAR	28	2-155	LEFT SIDE RING
6	6-60	DRAG WASHER (3 REQ.)	29L	29L-146	SPOOL
7	7C-60	METAL WASHER SET	30	30-200	STAND
8	8-60	TENSION SPRING	31	31-19	STAND SCREW (R.S.)
9	9-60	SPACING SLEEVE	32	32-16CH	STAND SCREW (L.S.)
10	10-60	STAR DRAG WHEEL	33	33-200	ROD CLAMP
11	11-200	ECCENTRIC JACK	34C	34C-200	ROD CLAMP SCREW W/ NUTS
12	12-155	PINION YOKE	35	35-155	CLICK TOUNGE
13	13-200	PINION	36	36-60CH	CLICK BUTTON
14	14-155	DOG SPRING	37	37-155	FRAME POST
15	15-200	DOG	38	38-7	R.S. POST SCREW
16	16-60CH	LOWER BRIDGE SCREW	39	39-5	L.S. POST SCREW
17	17-60CH	UPPER BRIDGE SCREW	40	40-60	L.S. BEARING
18	18-60	CLUTCH SPRING (2 REQ.)	41	41-60	L.S. BEARING SPRING
19	19-200	ECCENTRIC	149	152-200	WING NUT (2 REQ)
20	20-155	ECCENTRIC SPRING	149A	149-200	HEX NUT (2 REQ.)
21	21-200	ECCENTRIC LEVER	129	129-200	TAKE APART THUMB SCREW COMPLETE
22	22-99	ECCENTRIC SCREW	130	130-200	BRASS BUSHING, KNURLED, FOR THUMB SCREW
23	23-60	HANDLE SCREW	131	131-200	SPRING FOR THUMB SCREW
			132	132-200	BRASS RING/NUT FOR THUMB SCREW