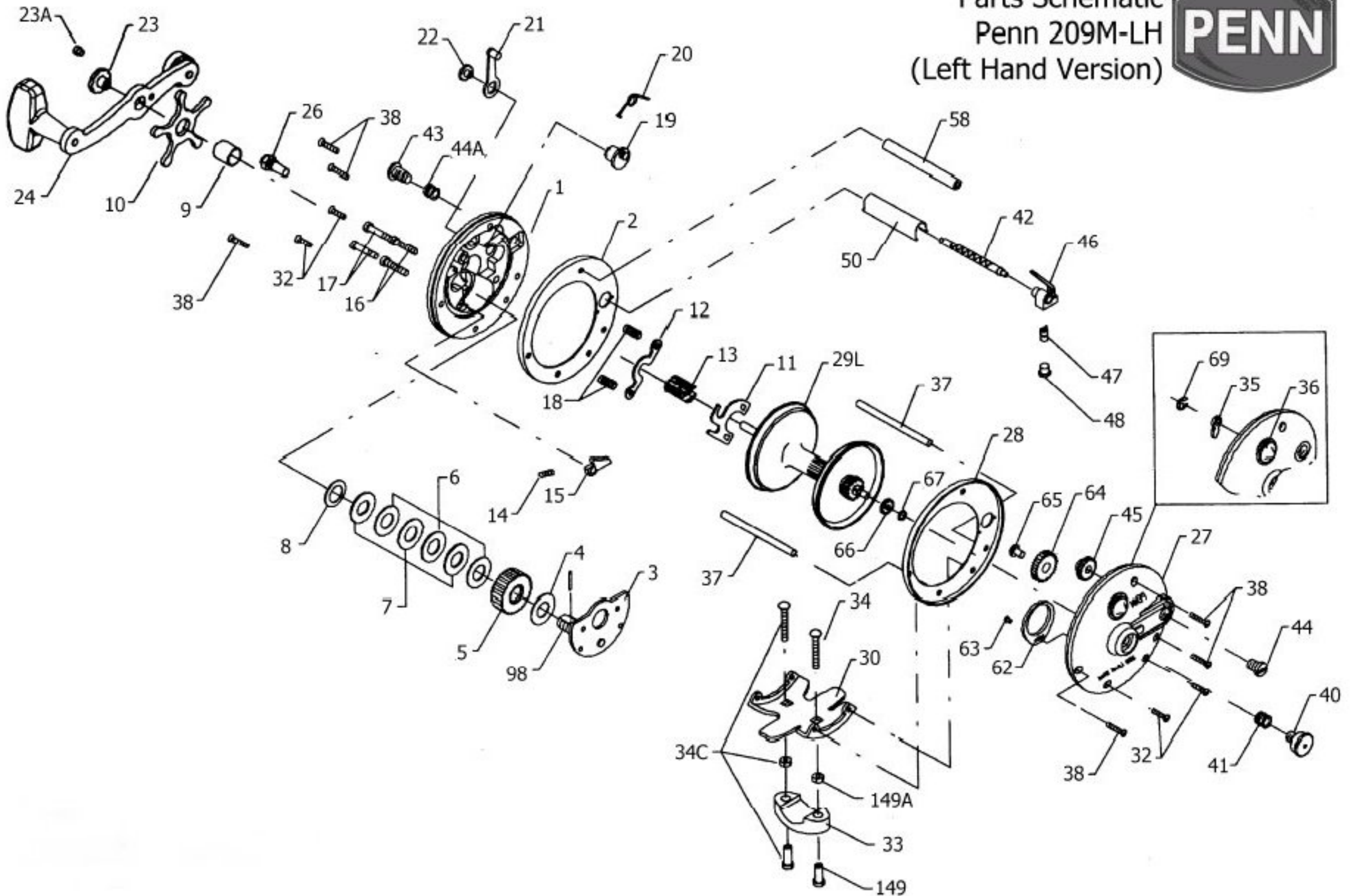


Parts Schematic  
Penn 209M-LH  
(Left Hand Version)



Penn Reel Parts list for:

Model: 209-LH, 209M-LH (LEFT HANDED VERSION)

KEY PART

NO NO.	DESCRIPTION
1 1-209LH	LEFT SIDE PLATE (LEFT HAND VERSION)
2 2-209	LEFT SIDE RING
3 3-155LH	BRIDGE W/ SLEEVE (LEFT HAND VERSION)
4 4-155	FIBER WASHER
5 5-155LH	MAIN GEAR (LEFT HAND VERSION)
6 6-155	DRAG WASHER
7 7C-155	DRAG WASHER (METAL SET)
8 8-80	TENSION WASHER
9 9-60	SPACING SLEEVE
10 10-60LH	STAR DRAG (LEFT HAND VERSION)
11 11-155	ECCENTRIC JACK
12 12-155	PINION YOKE
13 13-155LH	PINION GEAR (LEFT HAND VERSION)
14 14-99	DOG SPRING
15 15-209	DOG
16 16-60CH	LOWER BRIDGE SCREW (2 REQ.)
17 17-60CH	UPPER BRIDGE SCREW (2 REQ.)
18 18-80	CLUTCH SPRING
19 19-209LH	ECCENTRIC (LEFT HAND VERSION)
20 20-155	ECCENTRIC SPRING
21 21-208	ECCENTRIC LEVER
22 22-60CH	ECCENTRIC SCREW
23 23-60	HANDLE SCREW
23A 110-60	HANDLE LOCK SCREW
24 24-310	HANDLE
26 26-155	LEFT SIDE BEARING
27 27-209	RIGHT SIDE PLATE
28 28-209	RIGHT SIDE RING
29L 29L-209	SPOOL ALUMINUM
30 30-66	STAND
32 32-22	RIGHT/LEFT SIDE STAND SCREW (2 REQ. PER SIDE)

KEY PART

NO NO.	DESCRIPTION
33 033 113	ROD CLAMP
* 33R-200	RINGED CLAMP (OPTIONAL)
34 34-45	CLAMP SCREW (ONLY)
34C 34C-45	CLAMP SCREW W/ NUTS
35 35-155	CLICK TOUNGE
36 36N-209	CLICK BUTTON
37 37-180	FRAME POST (2 REQ.)
38 38-8	RIGHT/LEFT SIDE POST SCREW (3 REQ. PER SIDE)
40 40-60	RIGHT SIDE BEARING
41 41-60	RIGHT SIDE BEARING SPRING
42 42-209	WORM
43 44N-109	LEFT SIDE WORM BEARING
44 43-109	RIGHT SIDE WORM BEARING
44A 57-109	WORM BEARING SPRING
45 45N-209	WORM GEAR
46 46-209	LINE GUIDE
47 47-109	PAWL
48 48-109	PAWL COVER
50 50-209	WORM SHEILD
58 58-209	SLOTTED POST
62 62-209	CLICK SPRING
63 63-209	CLICK SPRING SCREW
64 84-209	IDLER GEAR
65 85-209	IDLER GEAR SCREW
66 66-209	LEVEL WIND DRIVE GEAR
67 87-209	DRIVE GEAR LOCK SPRING
69 89B-600	CLICK BUTTON RETAINING SPRING
98 98-155LH	GEAR SLEEVE (LEFT HAND VERSION)
149 149-45	CLAMP NUT (2 REQ.)
149A 149-200	HEX NUT (2 REQ.)

\*Not Shown