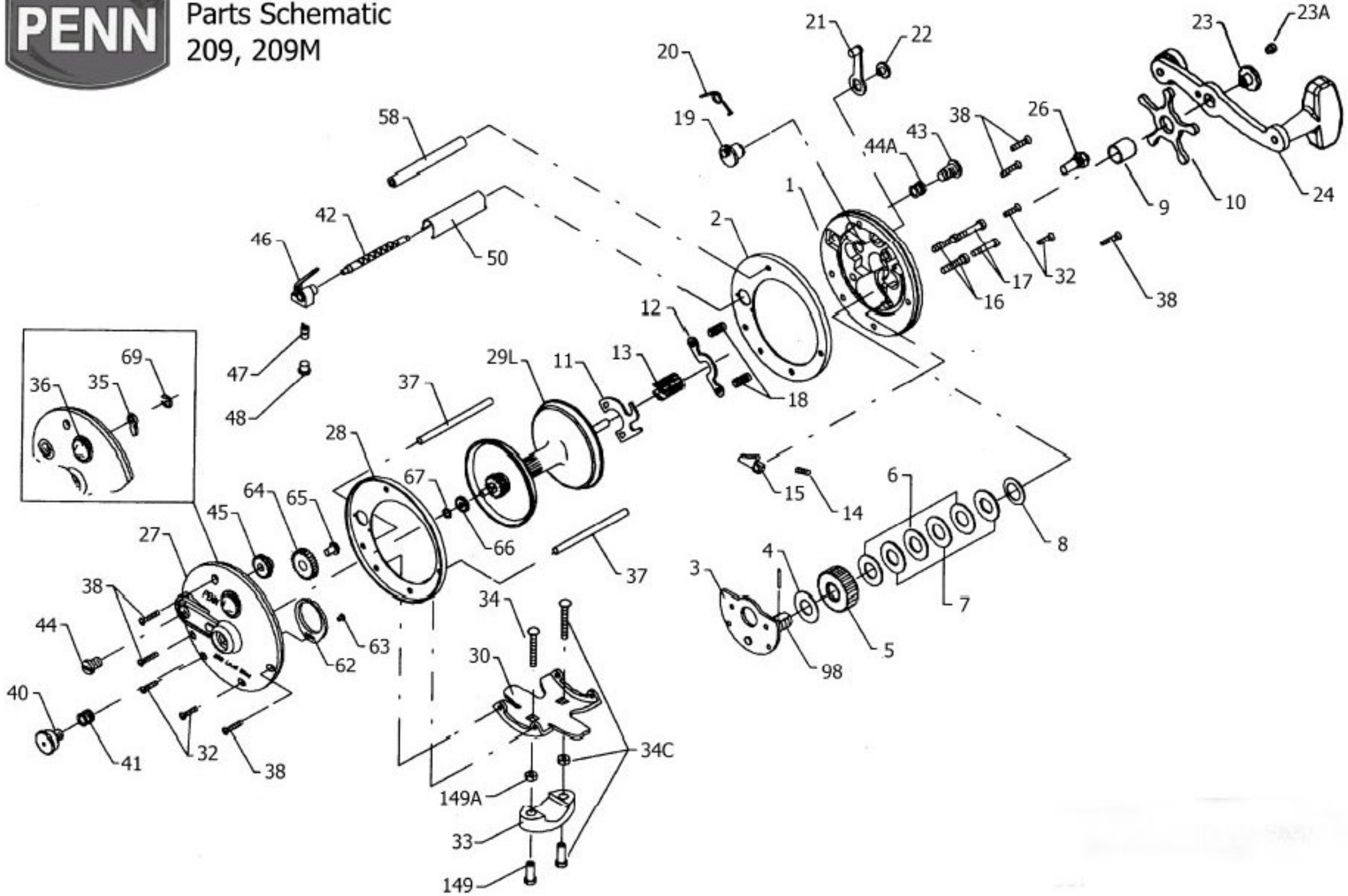




**Parts Schematic**  
209, 209M



**Penn Reel Parts list for:**

KEY PART NO NO.	DESCRIPTION
1 1-209	RIGHT SIDE PLATE
2 2-209	RIGHT SIDE RING
3 3-155	BRIDGE W/ SLEEVE
4 4-155	FIBER WASHER
5 5-155	MAIN GEAR
6 6-155	DRAG WASHER
7 7C-155	DRAG WASHER (METAL SET)
8 8-60	TENSION WASHER
9 9-60	SPACING SLEEVE
10 10-60	STAR DRAG
11 11-155	ECCENTRIC JACK
12 12-155	PINION YOKE
13 13-155	PINION GEAR
14 14-99	DOG SPRING
15 15-209	DOG
16 16-60CH	LOWER BRIDGE SCREW (2 REQ.)
17 17-60CH	UPPER BRIDGE SCREW (2 REQ.)
18 18-60	CLUTCH SPRING
19 19-209	ECCENTRIC
20 20-155	ECCENTRIC SPRING
21 21-209	ECCENTRIC LEVER
22 22-60CH	ECCENTRIC SCREW
23 23-60	HANDLE SCREW
23A 110-60	HANDLE LOCK SCREW
24 24-310	HANDLE
26 26-155	RIGHT SIDE BEARING
27 27-209	LEFT SIDE PLATE
28 28-209	LEFT SIDE RING
28L 29L-209	SPOOL ALLUMINUM
30 30-66	STAND
32 32-22	RIGHT/RIGHT SIDE STAND SCREW (2 REQ. PER SIDE)

**Model: 209, 209M**

KEY PART NO NO.	DESCRIPTION
33 033 113	ROD CLAMP
* 33R-200	RINGED CLAMP (OPTIONAL)
34 34-45	CLAMP SCREW (ONLY)
34C 34C-45	CLAMP SCREW W/NUTS
35 35-155	CLICK TOUNGE
36 36N-209	CLICK BUTTON
37 37-160	FRAME POST (2 REQ.)
38 38-8	RIGHT/RIGHT SIDE POST SCREW (3 REQ. PER SIDE)
40 40-60	LEFT SIDE BEARING
41 41-60	LEFT SIDE BEARING SPRING
42 42-209	WORM
43 44N-109	RIGHT SIDE WORM BEARING
44 43-109	LEFT SIDE WORM BEARING
44A 57-109	WORM BEARING SPRING
45 45N-209	WORM GEAR
46 46-209	LINE GUIDE
47 47-109	PAWL
48 48-109	PAWL COVER
50 50-209	WORM SHEILD
58 58-209	SLOTTED POST
62 62-209	CLICK SPRING
63 63-209	CLICK SPRING SCREW
64 64-209	IDLER GEAR
65 65-209	IDLER GEAR SCREW
66 66-209	LEVEL WIND DRIVE GEAR
67 67-209	DRIVE GEAR LOCK SPRING
69 69B-600	CLICK BUTTON RETAINING SPRING
98 98-155	GEAR SLEEVE
149 149-45	CLAMP NUT (2 REQ.)
149A 149-200	HEX NUT (2 REQ.)

**\*Not Shown**