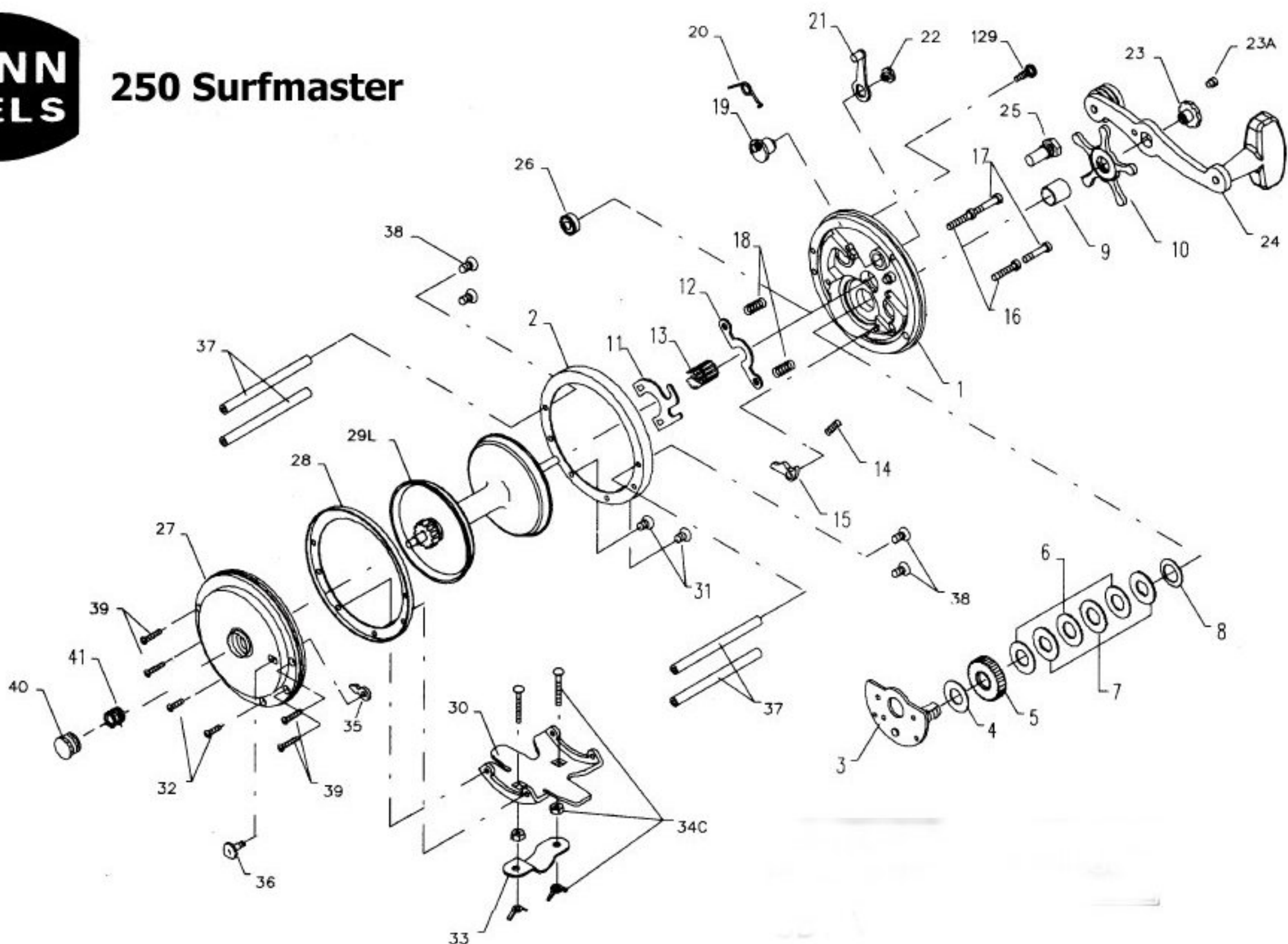




# 250 Surfmaster



## Penn Reel Parts list for:

### KEY PART

NO	NO.	DESCRIPTION
1	1-250	R.S. PLATE
2	2-250	R.S. RING
3	3-99	BRIDGE W/ SLEEVE
4	4-60	FIBER WASHER
5	5-60	MAIN GEAR
6	6-60	DRAG WASHER
7	7-60	METAL DISC SET
8	8-60	TENSION SPRING
9	9-60	SPACING SLEEVE
10	10-60	STAR DRAG
11	11-99	ECCENTRIC JACK
12	12-500	PINION YOKE
13	13-200	PINION GEAR
14	14-60	DOG SPRING
15	15-60	DOG
16	16-60CH	LOWER BRIDGE SCREW
17	17-60CH	UPPER BRIDGE SCREW
18	18-60	CLUTCH SPRING
19	19-99	ECCENTRIC
20	20-60L	ECCENTRIC SPRING
21	21-66	ECCENTRIC LEVER

## Model: 250

### KEY PART

NO	NO.	DESCRIPTION
22	22-99	ECCENTRIC SCREW
23	23-60	HANDLE SCREW
23A	23A-60	HANDLE LOCK SCREW
24	24-155	COMPLETE HANDLE
25	25-155	KNOB, RIVET & OILER
26	26-155	R.S. BEARING
27	27-250	L.S. PLATE
28	28-250	L.S. RING
29	29-250	PLASTIC SPOOL
29M	29M-250	METAL SPOOL
30	30-200	STAND
31	31-19	R.S. STAND SCREW (Old# 31-200)
32	32-16CH	L.S. STAND SCREW (Old# 31-285)
33	33-200	ROD CLAMP
34	34C-200	CLAMP SCREW W/ NUTS
35	35-60	CLICK TONGUE
36	36-60	CLICK BUTTON
37	37-155	FRAME POST
38	38-7	R.S. POST SCREW (Old# 38-200)
39	39-5	L.S. POST SCREW (Old# 31-60)
40	40-60	L.S. BEARING
41	41-60	L.S. BEARING SPRING
129	129-200	TAKE-APART THUMB SCREW

## Surfmaster

### DESCRIPTION

22	22-99	ECCENTRIC SCREW
23	23-60	HANDLE SCREW
23A	23A-60	HANDLE LOCK SCREW
24	24-155	COMPLETE HANDLE
25	25-155	KNOB, RIVET & OILER
26	26-155	R.S. BEARING
27	27-250	L.S. PLATE
28	28-250	L.S. RING
29	29-250	PLASTIC SPOOL
29M	29M-250	METAL SPOOL
30	30-200	STAND
31	31-19	R.S. STAND SCREW (Old# 31-200)
32	32-16CH	L.S. STAND SCREW (Old# 31-285)
33	33-200	ROD CLAMP
34	34C-200	CLAMP SCREW W/ NUTS
35	35-60	CLICK TONGUE
36	36-60	CLICK BUTTON
37	37-155	FRAME POST
38	38-7	R.S. POST SCREW (Old# 38-200)
39	39-5	L.S. POST SCREW (Old# 31-60)
40	40-60	L.S. BEARING
41	41-60	L.S. BEARING SPRING
129	129-200	TAKE-APART THUMB SCREW