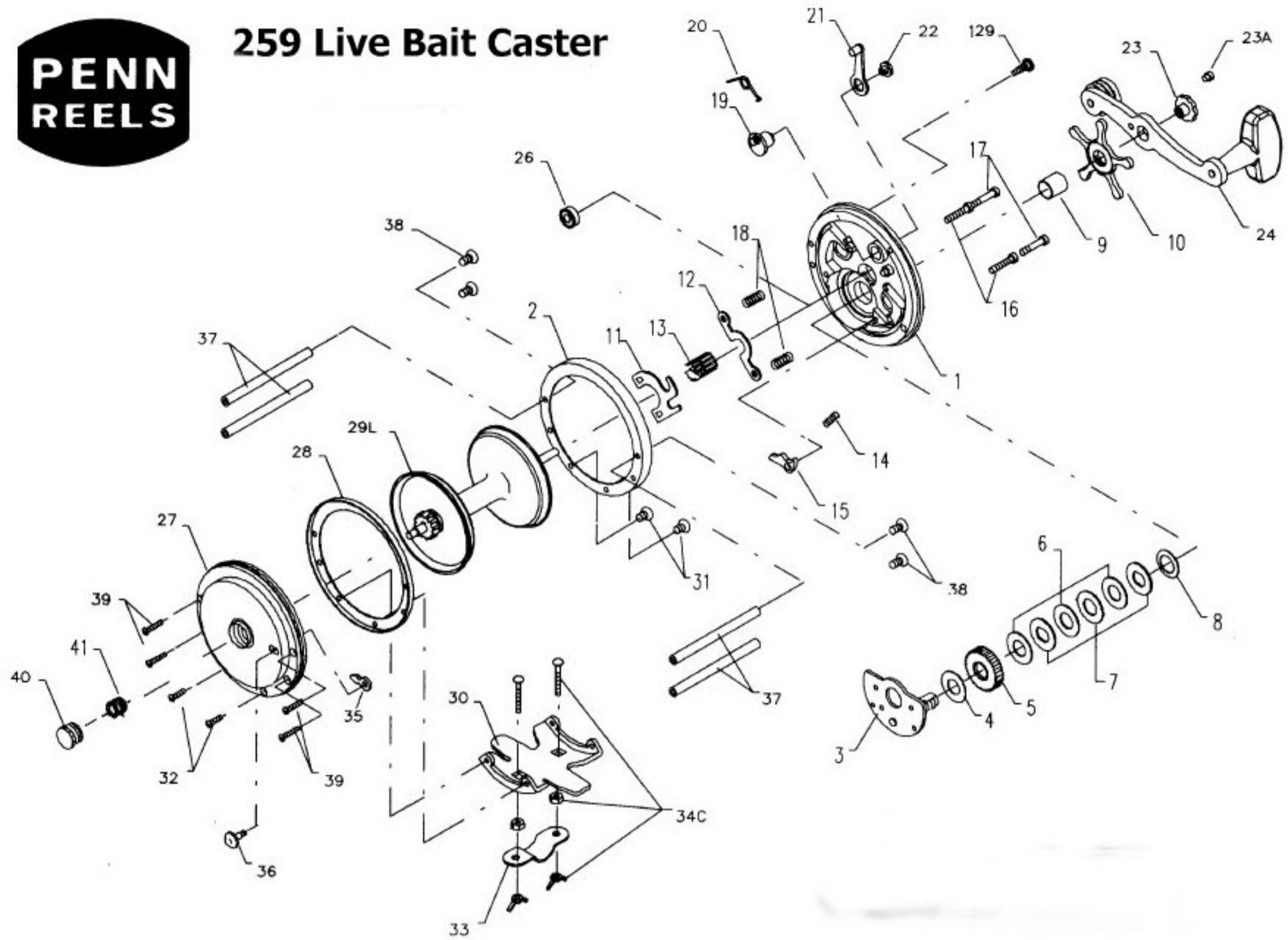




# 259 Live Bait Caster



## Penn Reel Parts list for:

## Model: 259

## Live Bait Caster

KEY NO	PART NO.	DESCRIPTION	KEY NO	PART NO.	DESCRIPTION
1	1-259	R.S. PLATE	23	23-60	HANDLE SCREW
2	2-110-O	R.S. RING	23A	23A-60	HANDLE LOCK SCREW
3	3-99	BRIDGE W/ SLEEVE	24	24-155	HANDLE
4	4-60	FIBER WASHER	25	25-155	KNOB, RIVET & OILER
5	5-60	MAIN GEAR	26	26-155	R.S. BEARING
6	6-60	DRAG WASHER (3 REQ.)	27	27-259	L.S. PLATE W/CLICKER
7	7C-60	METAL WASHER SET	28	28-110-I	INNER L.S. RING
8	8-60	TENSION SPRING	29	29-250	SPOOL, PLASTIC
9	9-60	SPACING SLEEVE	29L	29L-500	SPOOL, ALUMINUM
10	10-60	STAR DRAG	29M	29M-250	SPOOL, BRONZE
11	11-99	ECCENTRIC JACK	30	30-200	STAND
12	12-110	PINION YOKE	31	39-3	R.S. STAND SCREW (2 REQ.)
13	13-200	PINION	32	32-17	L.S. STAND SCREW (2 REQ.)
14	14-60	DOG SPRING	33	33-200	ROD CLAMP
15	15-60	DOG	34	34C-200	CLAMP SCREW W/NUTS (2 REQ.)
16	16-60CH	LOWER BRIDGE SCREW (2 REQ.)	35	35-60	CLICK TONGUE
17	17-60CH	UPPER BRIDGE SCREW (2 REQ.)	36	36-60CH	CLICK BUTTON
18	18-60	CLUTCH SPRING (2 REQ.)	37	37-155	POST FRAME
19	19-110	ECCENTRIC	38	39-9	R.S. POST SCREW (2 REQ.)
20	20-60L	ECCENTRIC SPRING	39	39-3	L.S. POST SCREW (2 REQ.)
21	21-66	ECCENTRIC LEVER	40	40-60	L.S. BEARING
22	22-99	ECCENTRIC SCREW	41	41-60	SPRING