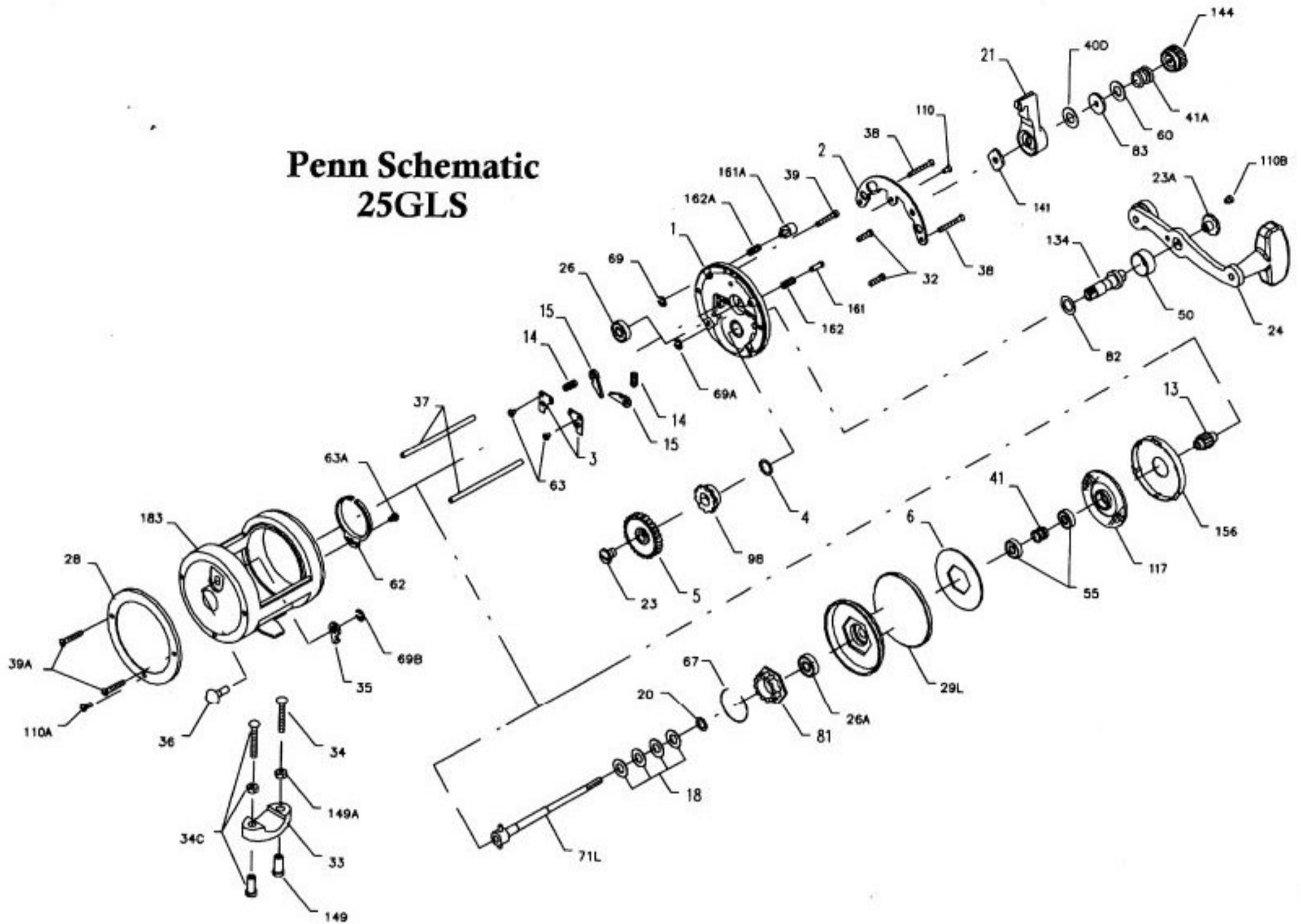


Penn Schematic 25GLS



Penn Reel Parts list for:

Model: 25GLS

KEY NO	PART NO.	DESCRIPTION	KEY NO	PART NO.	DESCRIPTION
1	1N-25	RIGHT SIDE PLATE	50	50-25	GEAR STUD COVER
2	2-25	QUADRANT RING	55	55-116	SPOOL BEARING (2 REQ.)
3	3N-25	DOG BRIDGE (2 REQ.)	60	60-25	LEVER BACKING WASHER
4	4-25	GEAR STUD WASHER	62	62-25	CLICK SPRING
5	5P-25	MAIN GEAR	63	63-500S	BRIDGE MOUNTING SCREW (2 REQ.)
6	6-25	DRAG WASHER	63A	63-500S	CLICK SPRING SCREW
13	13P-25	PINION GEAR	67	67-25	RATCHET RETAINING RING
14	14-40	DOG SPRING (2 REQ.)	69	69B-50	STRIKE BUTTON RETAINING RING
15	15N-25	DOG (2 REQ.)	69A	69B-50	FREE SPOOL BUTTON RETAINING RING
18	18-40	CLUTCH DISC SPRING (4 REQ.)	69B	69B-600	CLICK TONGUE RETAINING RING
20	20-40	THRUST WASHER	71L	71L-25	SPOOL SPINDLE ASSEMBLY
21	21R-25	CAM LEVER	81	81-25	CLICK RATCHET
*	21B-40	CAM LEVER INSERT	82	82-25	HANDLE SHIM
23	23-6CH	GEAR MOUNTING SCREW	83	83-25	PRE-SET COLLAR
23A	23-114	HANDLE SCREW	98	98-25	MAIN GEAR RATCHET
24	24-320	HANDLE	110	110-50	R.S. QUADRANT SCREW
26	26N-25	BALL BEARING F/PLATE DRIVE	110A	110-50	L.S. STAND SCREW
26A	26N-25	BALL BEARING F/L.S. SPOOL	110B	110-60	HANDLE LOCK SCREW
28	28-25	L.S. RING	117	117-25	DRIVE PALTE ASSEMBLY
29L	29LN-25	SPOOL	134	134-25	GEAR STUD
32	32-22	LOWER PLATE SCREW (2 REQ.)	*	134A-25	GEAR STUD WASHER
33	33-113	ROD CLAMP	141	141-25	CAM FOLLOWER
*	33R-200	RINGED ROD CLAMP (OPTIONAL)	144	144-25	PRE-SET KNOB
34	34-45	CLAMP SCREW (ONLY)	149	149-45	ROD CLAMP NUT (2 REQ.)
34C	34C-45	ROD CLAMP SCREW W/NUTS	149A	149-200	HEX NUT (2 REQ.)
35	35-25	CLICK TOUNGE	158	158-25	DRAG COVER
36	36-25	CLICK BUTTON	161	161-25	FREE SPOOL BUTTON
37	37-40	POST (2 REQ.)	161A	161-40	STRIKE BUTTON
38	38-40	R.S. POST SCREW (2 REQ.)	162	162-50	FREE SPOOL BUTTON SPRING
39	39-1	R.S. SCREW (TOP)	162A	162-50	STRIKE BUTTON SPRING
39A	39-8	L.S. POST SCREW (2 REQ.)	183	183-25	FRAME
40D	40D-25	FRICTION WASHER			*NOT SHOWN
41	41-40	PRE-SET KNOB SPRING			
41A	41-25	BEARING SPRING			