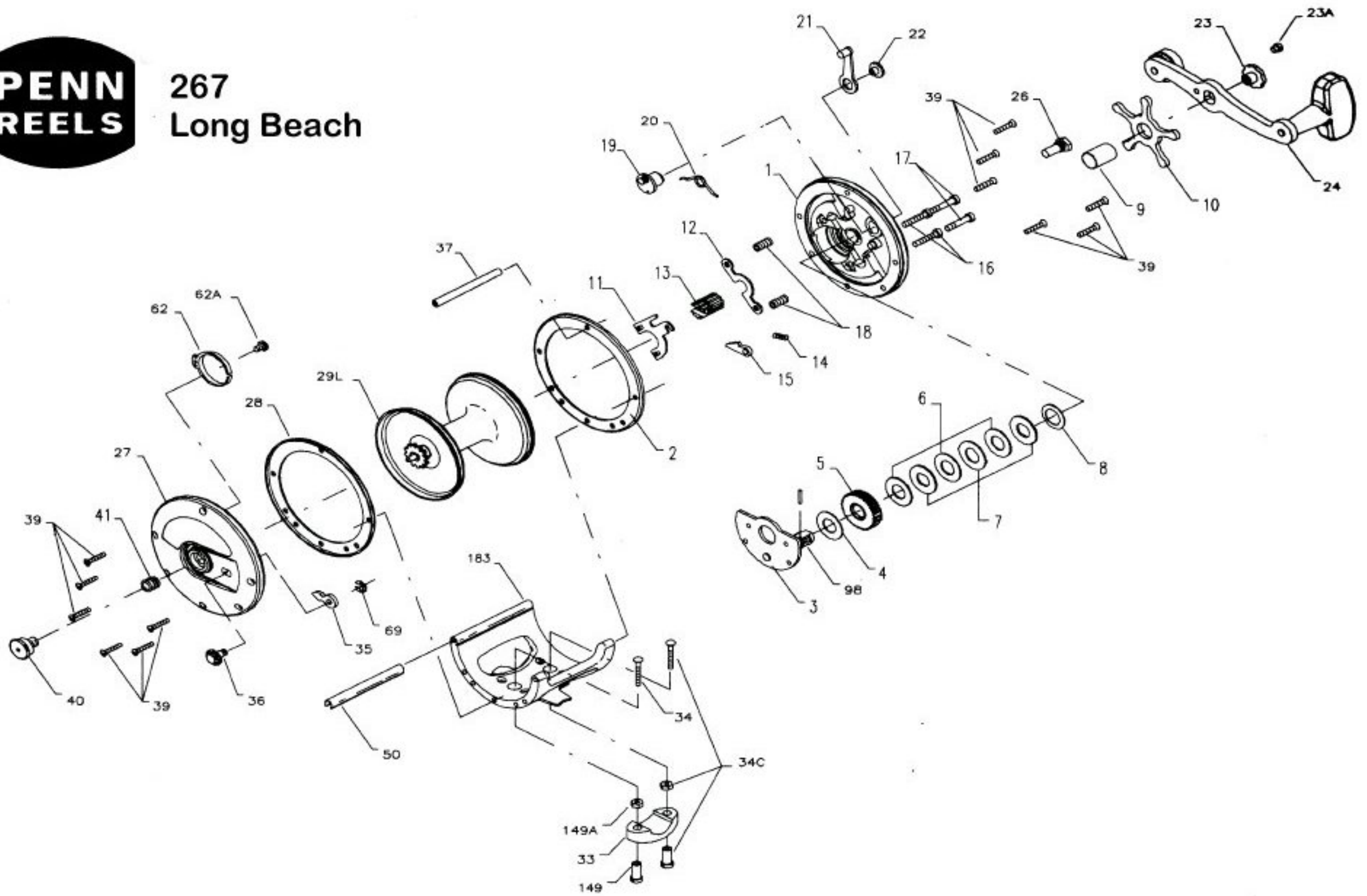




# 267 Long Beach



## Penn Reel Parts list for:

## Model: 267

KEY NO	PART NO.	DESCRIPTION	KEY NO	PART NO.	DESCRIPTION
1	1-267	RIGHT SIDE PLATE	23A	110-60	HANDLE LOCK SCREW
2	2-267	RINGS (2 REQ.)	24	24-66	HANDLE
3	3-66	BRIDGE W/ SLEEVE	26	26-60	RIGHT SIDE BEARING
4	4-60	FIBER WASHER	27	27-267	LEFT SIDE PLATE
5	5-66	MAIN GEAR	29L	29L-113	SPOOL
6	6-113	DRAG WASHERS (3 REQ.)	33	33-113	ROD CLAMP
7	7C-60	METAL WASHER SET	*	33R-200	RINGED ROD CLAMP (OPTIONAL)
8	8-60	TENSION SPRING	34	34-45	ROD CLAMP SCREW (2 REQ.)
9	9-66	SPACING SLEEVE	34C	34C-45	ROD CLAMP SCREW W/ NUTS
10	10-66	STAR DRAG WHEEL	35	35-60	CLICK TOUNGE
11	11-113	ECCENTRIC JACK	36	36-267	CLICK BUTTON
12	12-60	PINION YOKE	37	37-113	FRAME POST
13	13-49	PINION	39	39-5	SIDE PLATE SCREW (12 REQ.)
14	14-99	DOG SPRING	40	40-60	LEFT SIDE BEARING
15	15-99	DOG	41	41-60	LEFT SIDE BEARING SPRING
16	16-60CH	LOWER BRIDGE SCREW	50	50-113HL	FRAME POST COVER
17	17-60CH	UPPER BRIDGE SCREW	62	62-309	CLICK SPRING
18	18-60	CLUTCH SPRING	62A	63-209	CLICK SPRING SCREW
19	19-267	ECCENTRIC	69	69B-600	RETAINING RING
20	20-267	ECCENTRIC SPRING	98	98-60	GEAR SLEEVE
21	21-66	ECCENTRIC LEVER	149	149-45	ROD CLAMP NUT (2 REQ.)
22	22-60CH	ECCENTRIC SCREW	149A	149-200	ROD CLAMP HEX NUT (2 REQ.)
23	23-60	HANDLE SCREW	183	183-267	FRAME

\* Not Shown