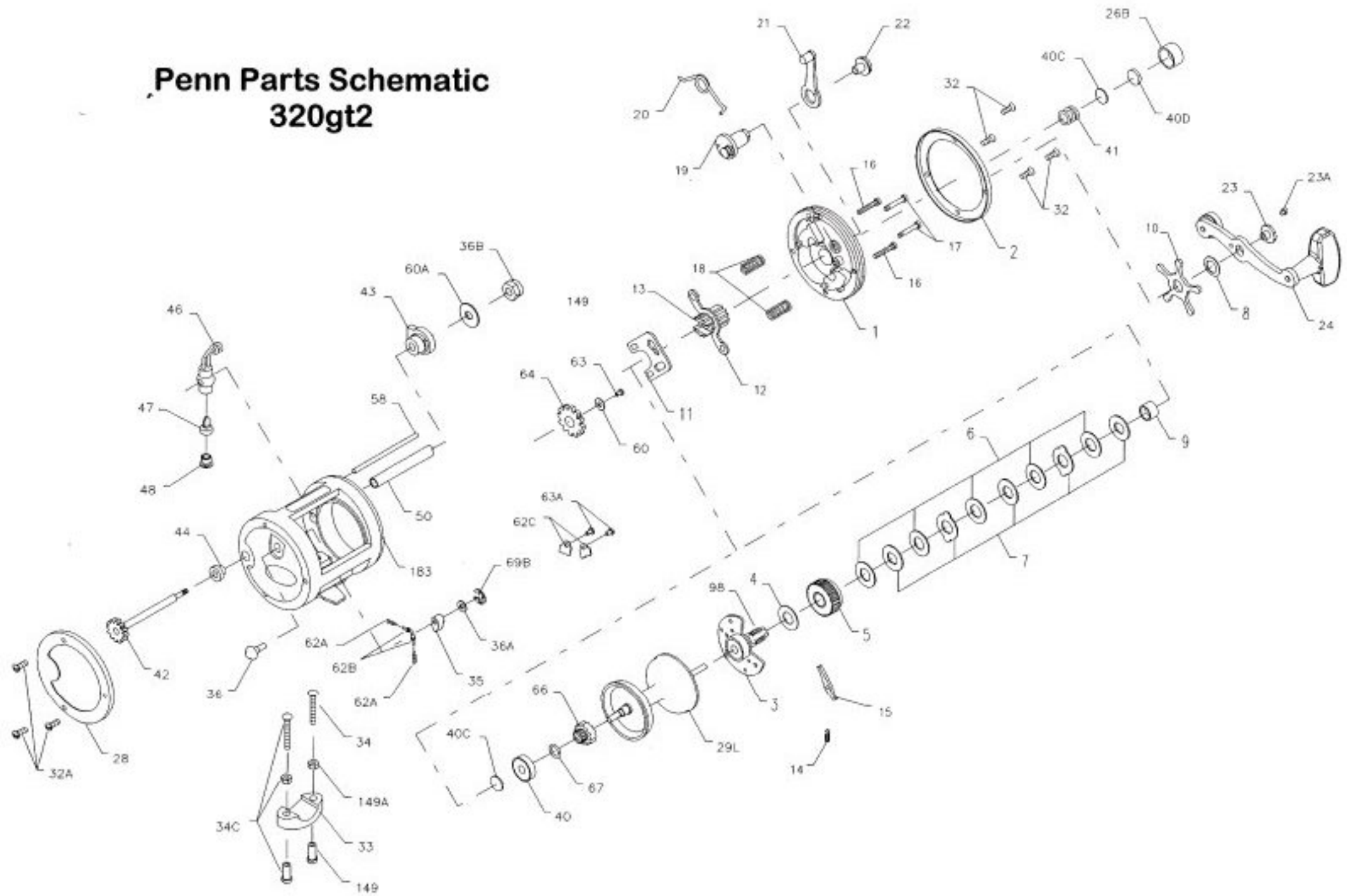


Penn Parts Schematic 320gt2



Penn Reel Parts list for:

KEY NO.	PART NO.	DESCRIPTION
1	1-320	RIGHT SIDE PLATE
2	2-320	RIGHT SIDE RING
3	3-320	BRIDGE ASSEMBLY
4	4-349	FIBER WASHER
5	5N-320	MAIN GEAR
6	6-320	FRICTION DRAG WASHES (5 REQ.)
7	7C-970	METAL DRAG WASHER (SET OF 5)
8	8-349	TENSION SPRING
9	9-320	SPACING SLEEVE
10	10-349	STAR DRAG
11	11-320	ECCENTRIC JACK
12	12-155	PINION YOKE
13	13N-320	PINION GEAR
14	14-330	DOG SPRING
15	15-320	DOG
16	16-113H	LOWER BRIDGE SCREW (2 REQ.)
17	17-113H	UPPER BRIDGE SCREW (2 REQ.)
18	18-60	CLUTCH SPRING (2 REQ.)
19	19-320	ECCENTRIC CAM
20	20-155	ECCENTRIC SPRING
21	21-285	ECCENTRIC LEVER ASSEMBLY
22	22-60	ECCENTRIC SCREW
23	23-114	HANDLE ASSEMBLY SCREW
23A	110-60	HANDLE LOCK SCREW
24	24-320	HANDLE ASSEMBLY
26B	26B-320	SPOOL TENSION CONTROL CAP
28	28-320GT2	LEFT SIDE RING
29L	29L-320	ALUMINUM SPOOL
32	32-17	SIDE PLATE SCREW (5 REQ.)
32A	110-50	FRAME SCREW (3 REQ.)
33	33-113	ROD CLAMP
*	33R-200	RINGED ROD CLAMP (OPTIONAL)

Model: 320GT2

KEY NO.	PART NO.	DESCRIPTION
34	34-45	CLAMP SCREW ONLY
34C	34C-45	CLAMP SCREW W/ NUTS
35	35-310N	CLICK TONGUE
36	36-320	CLICK BUTTON
36A	36A-40	CLICK BUTTON WASHER
36B	36-700	WORM SHAFT NUT
40	40-320	BALL BEARING
40C	40C-320	METAL THRUST WASHER (2 REQ.)
40D	40D-320	RUBBER THRUST WASHER
41	41-330	RIGHT SIDE THRUST SPRING
42	42-320N	WORM
43	43-320	RIGHT SIDE WORM BEARING
44	44-320	LEFT SIDE WORM BEARING
46	46-320N	LINE GUIDE CARRIAGE
47	47-320	PAWL
48	48-330N	PAWL COVER SCREW
50	50N-320	WORM SHEILD
58	58-320	LINE GUIDE POST
60	60-320	IDLER GEAR WASHER
60A	60-320	WORM NUT WASHER
62A	62-545	CLICK SPRING
62B	62B-310	CLICK PIN (2 REQ.)
62C	62C-321LH	CLICK SPRING COVER (2 REQ.)
63	63-500S	IDLER GEAR SCREW
63A	63-500S	CLICK SPRING SCREW
64	64-320	IDLER GEAR
66	66-320	SPOOL GEAR CLICK RATCHET
67	67-9	SPOOL GEAR LOCK RING
69B	69B-600	RETAINING RING (CLICK BUTTON)
98	98-320	GEAR SLEEVE
149	149-45	CLAMP NUT ONLY
149A	149-200	HEX NUT ONLY
183	183-320GT2	FRAME

* Not Shown