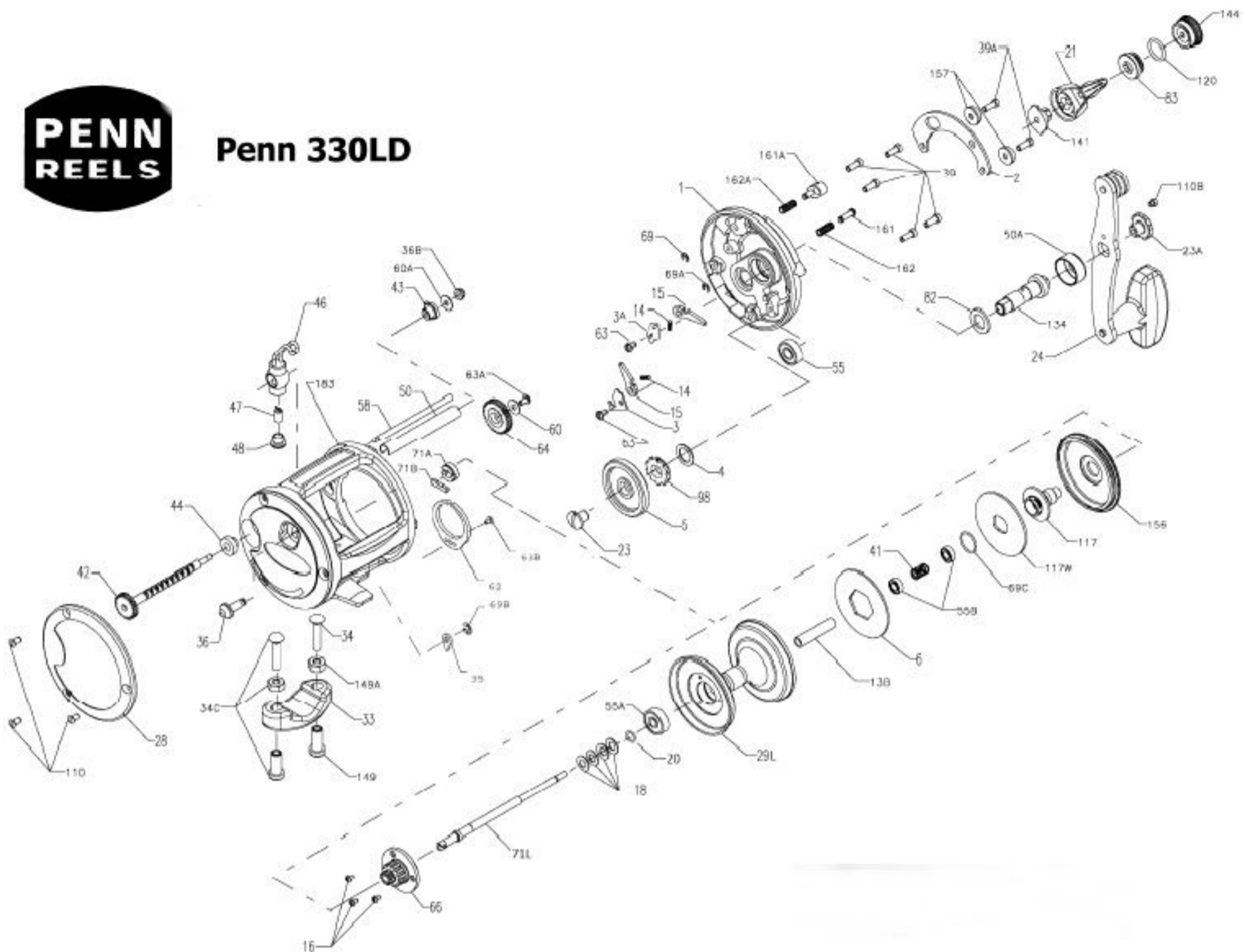




Penn 330LD



Penn Reel Parts list for:

Model: 330LD Graphite Leverdrag Series

KEY NO	PART NO.	DESCRIPTION
1	1-330LD	RIGHT SIDE PLATE
2	2-330LD	RIGHT SIDE RING
3	3-330LD	DOG BRIDGE
3A	3A-330LD	R.S. DOG BRIDGE
4	4-25	GEAR STUD WASHER
5	5-320LD	MAIN GEAR
6	6-25	DRAG WASHER HT100
13B	13B-330LD	SPOOL SLEEVE
14	14-99	DOG SPRING (2 REQ.)
15	15N-25	DOG (2 REQ.)
16	16-975LD	SPOOL GEAR SCREW (3 REQ.)
18	18-320LD	CLUTCH DISC SPRING (4 REQ.)
20	20-320LD	THRUST WASHER
21	21-330LD	DRAG CAM LEVER
23	23-6CH	GEAR MOUNTING SCREW
23A	23-114	HANDLE SCREW
24	24-225	HANDLE ASSEMBLY
28	28-330	LEFT SIDE RING
29L	29L-330LD	ALUMINUM SPOOL
33	33-113	ROD CLAMP
*	33R-200	RINGED ROD CLAMP (OPTIONAL)
34	34-45	CLAMP SCREW ONLY
34C	34C-45	CLAMP SCREW W/ NUTS
35	35-320	CLICK TONGUE
36	36-320	CLICK BUTTON
36B	36-700	WORM SHAFT NUT
39	39-4CH	R.S. PLATE SCREW (5 REQ.)
39A	39-4CH	SPACER QUADRANT SCREW (2 REQ.)
41	41-320LD	BEARING SPRING
42	42-330N	WORM
43	43-330	RIGHT SIDE WORM BEARING
44	44-330	LEFT SIDE WORM BEARING
46	46-330N	LINE GUIDE CARRIAGE
47	47-975	PAWL
48	48-330N	PAWL COVER SCREW
50	50N-330	WORM SHIELD
50A	50-25	COVER, GEAR STUD
55	55-28N-25	R.S. PLATE BALL BEARING

KEY NO	PART NO.	DESCRIPTION
55A	55-320LD	L.S. SPOOL BEARING
55B	55-116	SPOOL BEARING (2 REQ.)
58	58-330	LINE GUIDE POST
60	60-320	IDLER GUIDE WASHER
60A	60-320	WORM BEARING WASHER
62	62-209	CLICK SPRING
63	63-500S	DOG BRIDGE SCREW (2 REQ.)
63A	63-500S	IDLER GEAR SCREW
63B	63-500S	CLICK SPRING SCREW
64	64-330	IDLER GEAR
66	66-320LD	SPOOL GEAR
69	69B-50	STRIKE BUTTON RETAINING RING
69A	69B-50	FREE SPOOL BUTTON RETAINING RING
69B	69B-600	CLICK TONGUE RETAINING RING
69C	69C-225	RETAINING RING
71A	71A-320LD	BUSHING
71B	71B-320LD	KEY
71L	79L-330LD	SPINDLE SPOOL
82	82-25	HANDLE SHIM
83	83-225	PRESET COLLAR
98	98-25	MAIN GEAR RATCHET
110	110-50	L.S. RING SCREW (3 REQ.)
110B	110-60	HANDLE LOCK SCREW
117	117-330LD	PINION DRIVE PLATE
117W	117W-225	WASHER, DRIVE PLATE
120	120-113H	O-RING
134	134-330LD	GEAR STUD
141	141-225	CAM FOLLOWER
144	144-320LD	PRESET KNOB
149	149-45	CLAMP NUT ONLY
149A	149-200	HEX NUT ONLY
156	156-225	DRAG COVER
157	157-330LD	QUADRANT SPACER (2 REQ.)
161	161-25	FREE SPOOL BUTTON
161A	161-40	STRIKE BUTTON
162	162-50	FREE SPOOL BUTTON SPRING
162A	162-50	STRIKE BUTTON SPRING
183	183-330LD	FRAME