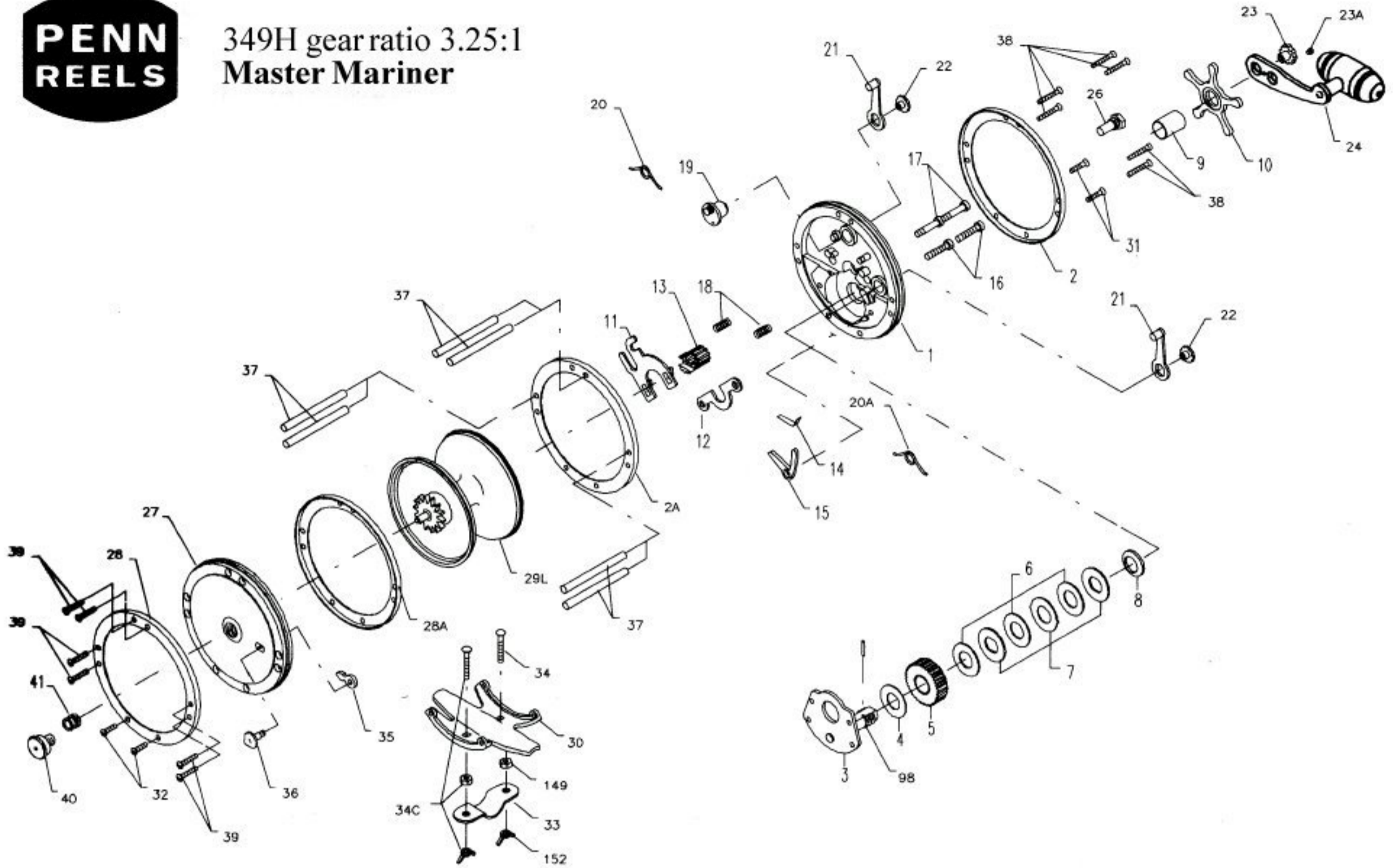




**349H gear ratio 3.25:1
Master Mariner**



Penn Reel Parts list for:

KEY PART NO NO.	DESCRIPTION
1 1-349H	R.S. PLATE
2 2-349	R.S. RING
3 3-349	BRIDGE W/ SLEEVE
4 4-349	FIBER WASHER
5 5-349H	MAIN GEAR
6 6-349H	DRAG WASHER
7 7-349H	METAL DISC SET
8 8-349	TENSION SPRING
9 9-349	SPACING SLEEVE
10 10-349	STAR DRAG
11 11-349	ECCENTRIC JACK
12 12-349H	PINION YOKE
13 13-349H	PINION GEAR
14 14-349	DOG SPRING
15 15-349	DOG
16 16-60CH	LOWER BRIDGE SCREW
17 17-60CH	UPPER BRIDGE SCREW
18 18-349	CLUTCH SPRING
19 19-60	ECCENTRIC
20 20-60L	ECCENTRIC SPRING
21 21-49	ECCENTRIC LEVER

Model: 349H

KEY PART NO NO.	DESCRIPTION
22 22-60CH	ECCENTRIC SCREW
23 23-114	HANDLE SCREW
23A 110-60	HANDLE LOCK SCREW
24 24-349H	COMPLETE HANDLE
25 25-114	KNOB, RIVET & OILER
26 26-349	R.S. BEARING
27 27-349H	L.S. PLATE
28 28-349	L.S. RING
29M 29M-349	METAL SPOOL
30 30-349	STAND
31 32-18	R.S. STAND SCREW
32 32-18	L.S. STAND SCREW
33 33-49	ROD CLAMP
34 34C-49	CLAMP SCREW W/ NUTS
35 35-114	CLICK TONGUE
36 36-114H	CLICK BUTTON
37 37-49	FRAME POST
38 39-9	R.S. POST SCREW
39 39-9	L.S. POST SCREW
40 40-349	L.S. BEARING
41 41-349	L.S. BEARING SPRING
98 98-349	BRIDGE SLEEVE

Master Mariner

3.25:1 gear ratio vs 349 at 2.33:1

KEY PART NO NO.	DESCRIPTION
22 22-60CH	ECCENTRIC SCREW
23 23-114	HANDLE SCREW
23A 110-60	HANDLE LOCK SCREW
24 24-349H	COMPLETE HANDLE
25 25-114	KNOB, RIVET & OILER
26 26-349	R.S. BEARING
27 27-349H	L.S. PLATE
28 28-349	L.S. RING
29M 29M-349	METAL SPOOL
30 30-349	STAND
31 32-18	R.S. STAND SCREW
32 32-18	L.S. STAND SCREW
33 33-49	ROD CLAMP
34 34C-49	CLAMP SCREW W/ NUTS
35 35-114	CLICK TONGUE
36 36-114H	CLICK BUTTON
37 37-49	FRAME POST
38 39-9	R.S. POST SCREW
39 39-9	L.S. POST SCREW
40 40-349	L.S. BEARING
41 41-349	L.S. BEARING SPRING
98 98-349	BRIDGE SLEEVE