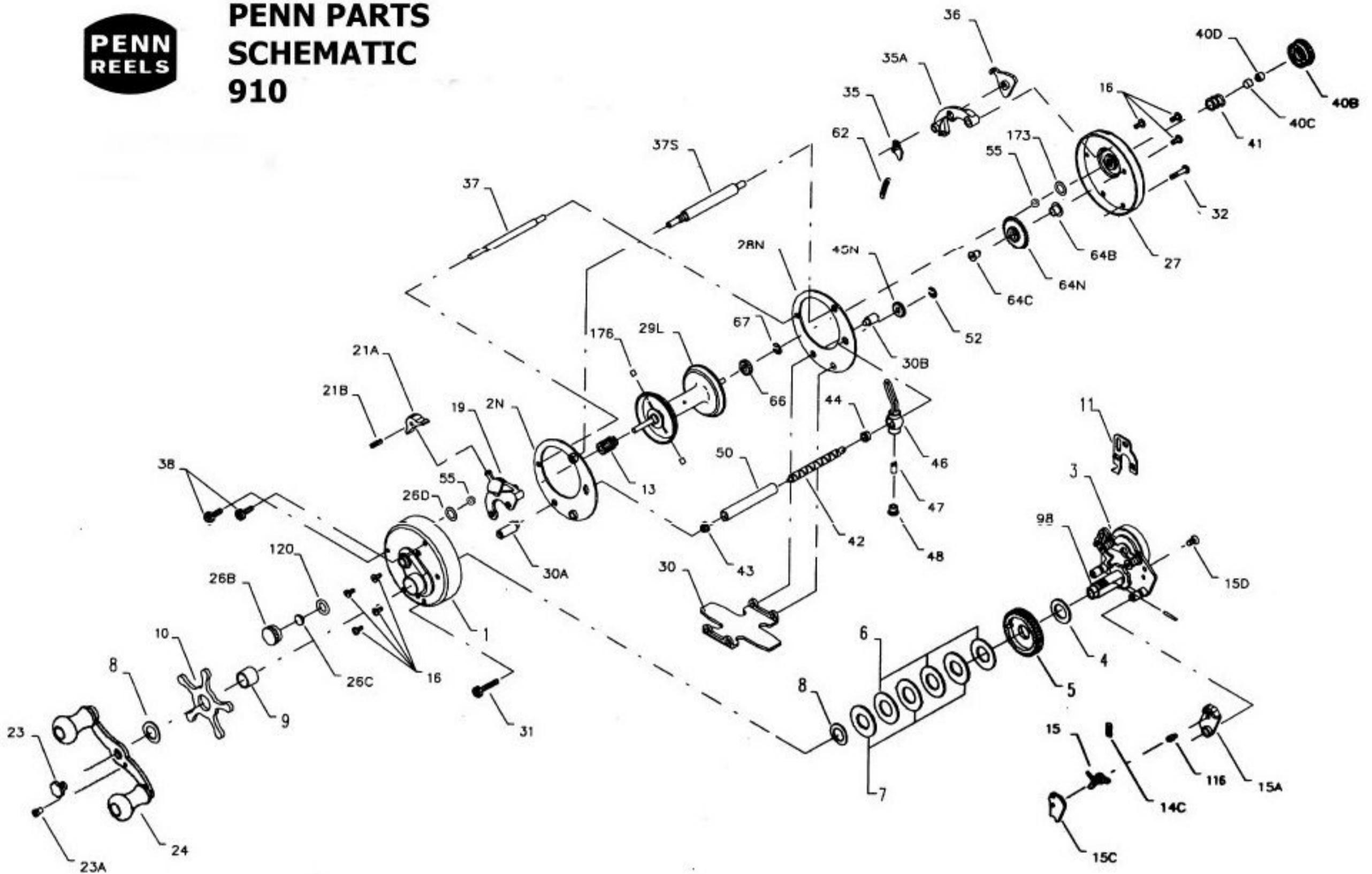




PENN PARTS SCHEMATIC 910



Penn Reel Parts list for:

Model: 910

KEY PART NO.	NO.	DESCRIPTION	KEY PART NO.	NO.	DESCRIPTION
1	1-910	RIGHT SIDE PLATE	31	31N-910	STAND SCREW
2N	2N-910	RIGHT SIDE RING	32	32-910	L.S. STAND SCREW
3	3-910	BRIDGE ASSEMBLY	35	35-910	CLICK TOUNGE
4	4-910	FIBER WASHER	35A	35A-910	CLICK SUPPORT BLOCK
5	5-910	MAIN GEAR	36	36-910	CLICK LEVER CUT ECC.
6	6-910	DRAG WASHER	37	37-910	FRAME POST
7	7C-910	METAL DISC SET	37S	58N-910	SLOTTED LINE GUIDE
8	8-910	TENSION SPRING	38	38-910	POST SCREW
9	9-910	SPACING SLEEVE	40B	40B-910	L.S. BEARING CUP
10	10-910	STAR DRAG-WHEEL	40C	40C-910	PLASTIC CAST CONTROL BUMPER
11	11-910	ECCENTRIC JACK	40D	40D-910	RUBBER CAST CONTROL BUMPER
13	13-910	PINION GEAR	41	41-910	L.S. BEARING SPRING
14C	14C-910	DOG SPRING	42	42-910	WORM
15	15-910	DOG	43	43-910	R.S. WORM BEARING
15A	15A-910	DOG HOUSING	44	44-910	L.S. WORM BEARING
15C	15C-910	DOG COVER	45N	45N-910	WORM GEAR
15D	15D-910	DOG COVER SCREW	46	46-910	LINE GUIDE
16	16-910	BRIDGE SCREW	47	47-910	PAWL
19	19-910	ECCENTRIC LEVER	48	48-109	PAWL COVER SCREW
21A	21A-910	LEVER KNOB	50	50-910	WORM SHEILD
21B	21B-910	LEVER KNOB PIN	52	52-910	RETAINING RING
23	23-910	HANDLE SCREW	55	***55-910	BALL BEARING (2 REQ.)
23A	110-60	HANDLE LOCK SCREW	*	58A-910	R.S. POST NUT
24	24-920	HANDLE (old #24-910)	62	62-910	CLICK SPRING
26B	26B-910	R.S. BEARING CAP	64B	64B-910	DLER GEAR BUSHING
26C	26C-910	R.S. SPOOL POSITIONER	64C	64C-910	DLER GEAR SHAFT
26D	26D-910	R.S. BEARING RETAINER	64N	64N-910	DLER GEAR (NEW)
27	27-910	LEFT SIDE PLATE	66	66N-910	DRIVE GEAR
28	28N-910	LEFT SIDE RING	67	67-9	DRIVE GEAR LOCK SPRING
29L	29L-910	SPOOL	98	98-910	GEAR SLEEVE
30	30N-910	STAND	116	116-910	DOG POST
30A	30A-910	R.S. STAND SPACER	120	120-910	O' RING
30B	30B-910	L.S. STAND SPACER	*	159-910	SPRING
			173	173-910	L.S. BRG. RETAINER
			*	175-910	LIGHT BRAKES (2 REQ.) (OPTIONAL)
			176	176-910	MEDLIM BRAKES (2 REQ.)
			*	177-910	HEAVY BRAKES (2 REQ.) (OPTIONAL)

* Not Shown

*** 55-910 replaces old number 26-910 ball bearing