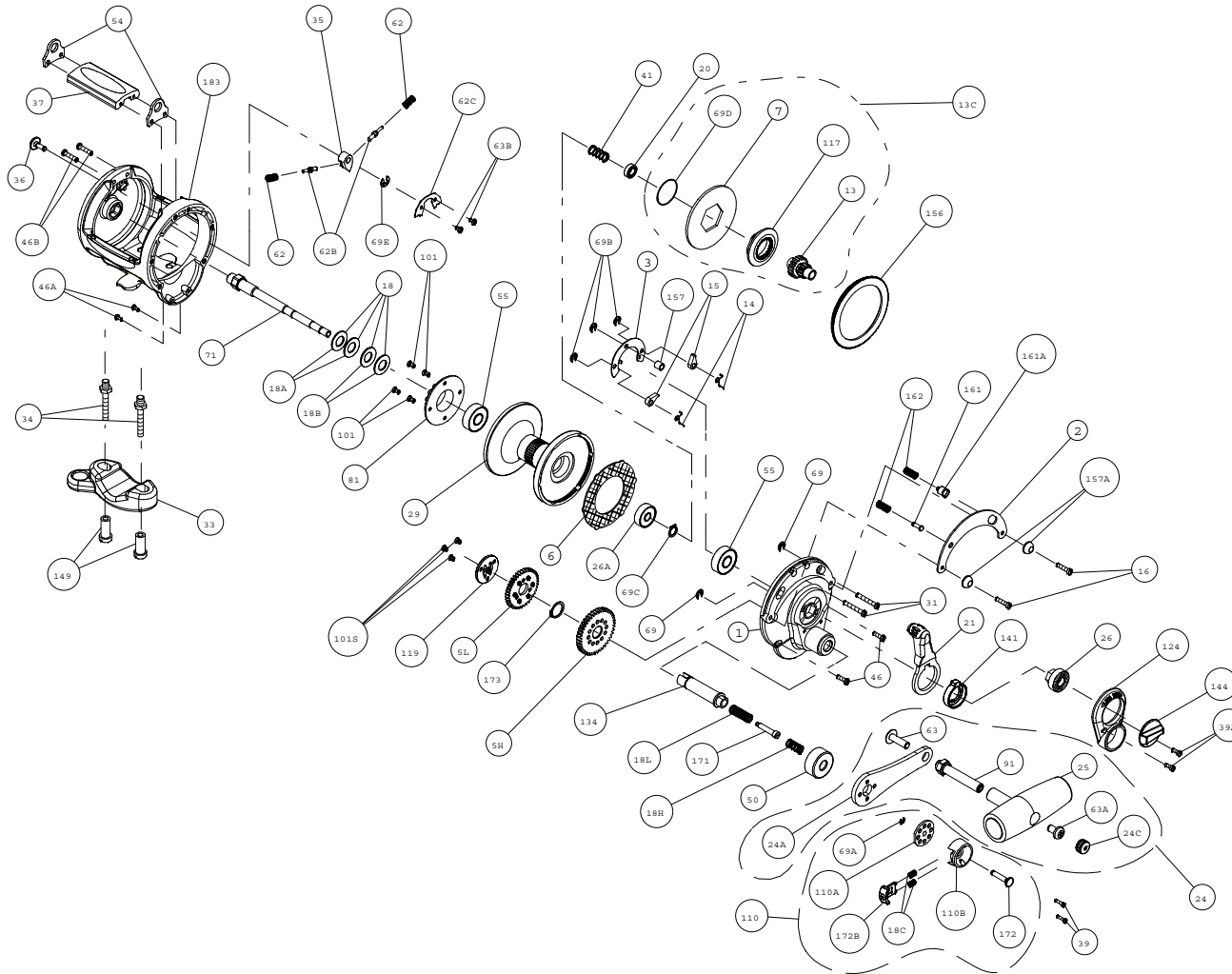




PARTS LIST FOR MODELS 10KG AND 15KG (GLD 20II & GLD 30II)



KEY NO.	DESCRIPTION	PART NO.
18A	Light Disc Clutch Spring (2 req.) (10 KG only)	018 050W
18B	Heavy Disc Clutch Spring (2 req.) (10KG only)	018 050TW
18C	Shift Button Spring (2 req.)	018C015KG
18H	Shift Spring (Heavy)	018H015KG
18L	Shift Spring (Light)	018L015KG
20	Spindle Ball Bearing	020 4200
21	Eccentric Lever	021 015KG
24	Handle Complete	024M015KG
24A	Handle Blank	024M015KG-1
24C	Handle Knob Cap	024C050
25	Handle Knob	025M050
26	Bushing	026 015KG
26A	Spool Ball Bearing	026 040
29	Spool (10kg only)	029L010LD
	Spool (15kg only)	029L 015LD
31	Long Screw (2 req.)	031T015KG
33	Rod Clamp (10kg only)	033 113
	Rod Clamp (15kg only)	033 340
34	Rod Clamp Screw (2 req.)	034 010KG
35	Click Tongue	035 310N
36	Click Button	036 015KG
37	Top Spacer Bar (10kg only)	037EGLD202
	Top Spacer Bar (15kg only)	037EGLD302
39	Shift Housing Screw (2 req.)	023 015KG
39A	Bridge Screw (2 req.)	039T015KG
41	Spindle Spring	041 015KG
46	Short Screw (2 req.)	046T750
46A	Frame Screw (2 req.)	032 002
46B	Long Frame Screw (2 req.)	046T9500
50	Gear Stud Shield	050M015KG
54	Harness Lug (2 req.)	054M015KG
55	Ball Bearing (2 req.)	055 050
62	Click Spring	062 545
62B	Click Pin (2 req.)	062B525
62C	Click Spring Cover	062C015KG
63	Handle Srew	063 050
63A	Handle Stud Screw	063A050
63B	Spring Cover Screw (2 req.)	063 500S
63C	Screw	063 050
69	Retaining Ring (2 req.)	069B050
69A	Retaining Ring	069B030S
69B	Retaining Ring (3 req.)	069B600
69C	Spindle Retaining Ring	069C015KG
69D	Retaining Ring	069D015KG
69E	Retaining Ring	069B600
71	Spool Spindle (10kg only)	071 010KG
	Spool Spindle (15kg only)	071 015KG
81	Click Ratchet	081 040
91	Handle Rivet	091N050
101	Ratchet Screw (4 req.)	101 030
101S	Retaining Plate Screw (4 req.)	101 050S
110	Shifter Assembly	110 015KG
110A	Handle Locking Plate	110A015KG
110B	Shift Housing	110B015KG
117	Drive Plate	117 015KG
119	Retaining Plate	119 015KG
124	Bridge Cover	124 015KG
134	Gear Stud	134 015KG
141	Cam Follower	141 015KG
144	Preset Knob	144M015KG
149	Rod Clamp Nut (2 req.)	149 045
156	Drag Cover	156 015KG
157	Spacer Bushing	157 050
157A	Spacer Bushing	157 015KG
161	Free Spool Button	161 025
161A	Strike Button	161 040
162	Button Spring (2 req.)	162 050
171	Shift Plunger	171 015KG
172	Shift Button (Low)	172 015KG
172B	Shift Button (High)	172B015KG
173	Retaining Ring	173 015KG
183	Frame (10kg only)	183M010KG
	Frame (15kg only)	183M015KG

SPECIFICATIONS AND PRE-SETTING OF DRAG

	LINE CAPACITY	GEAR RATIO	LINE CLASS	STRIKE SETTING	FULL OR MAX. SETTING
15KG	600yds/30 lb 550M/0,55 mm	3.8-1 HIGH 2-1 LOW	30 lb 15 kg	7-10 lbs 3-4,5 kg	15-18 lbs 7-8 kg
10KG	800yds/20 lb 730M/0,45 mm	3.8-1 HIGH 2-1 LOW	20 lb 10 kg	4-7 lbs 1,8-3 kg	10-12 lbs 4,5-5,5 kg

KEY NO.	DESCRIPTION	PART NO.
1	Right-Side Plate Assembly	001M015KG
2	Quadrant Ring	002M015KG
3	Dog Bridge	003 015KG
5H	Main Gear (High Speed)	005 015KGHS
5L	Main Gear (Low Speed)	005 015KGLS
6	Drag Washer	006 015KG
7	Metal Drag Washer	007 015KG
13	Pinion Gear	013 015KG
13C	Pinion Asm. Complete	013C015KG
14	Dog Spring (2 req.)	014 015KG
15	Dog (2 req.)	015 015KG
16	Side Plate Screw (2 req.)	016T060CH
18	Disc Clutch Spring (4 req.) (15KG only)	018 050TW

