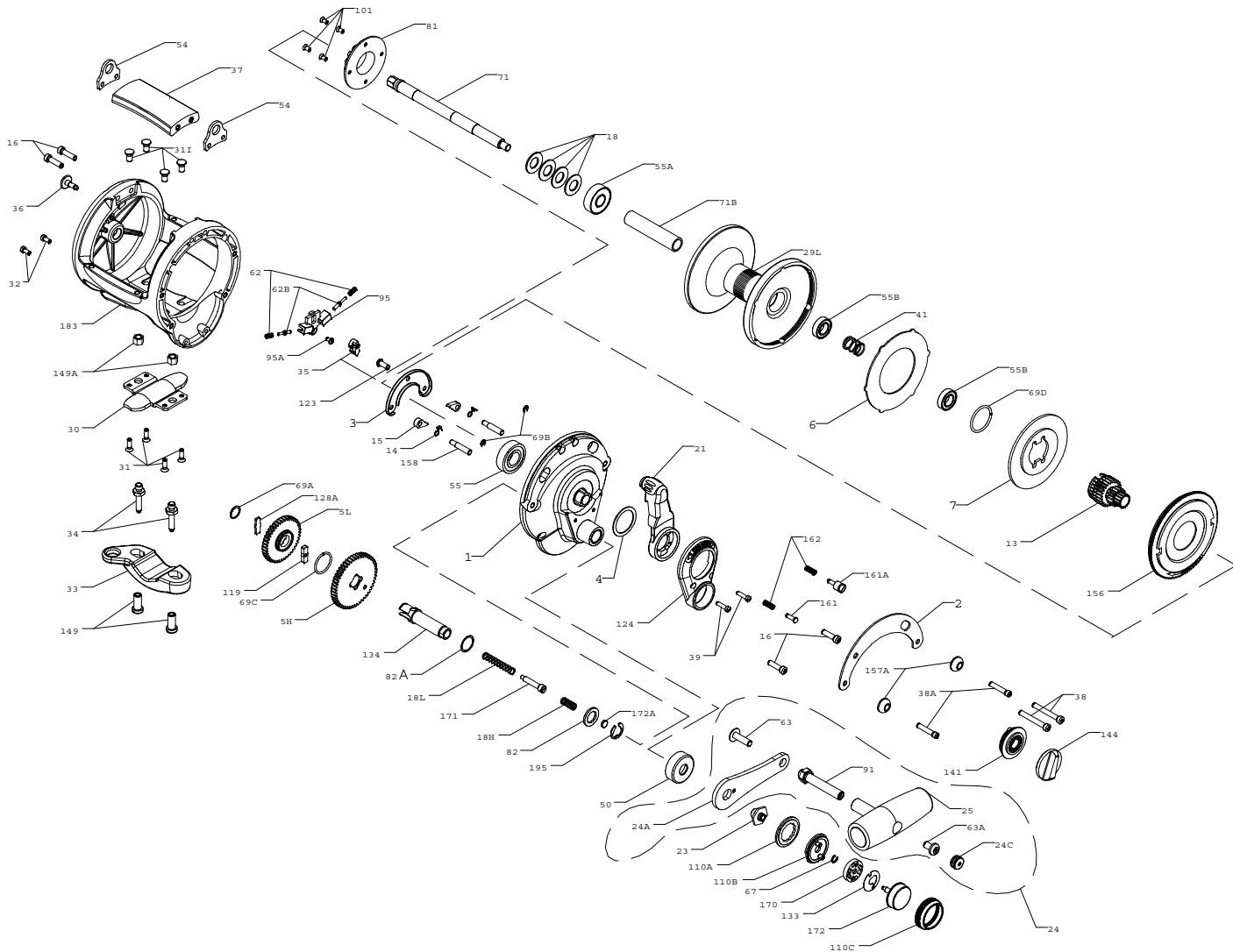




**PARTS LIST FOR MODEL 24KG (GLD50 II)**



KEY NO.	DESCRIPTION	PART NO.
16	Side Plate Screw (4 req.)	016T130
18	Disc Clutch Spring (4 req.)	018 050TW
18H	Shift Spring (Heavy)	018H030VS
18L	Shift Spring (Light)	018L030VS
21	Eccentric Lever	021 024KG
23	Handle Screw	023 030VS
24	Handle Complete	024M024KG
24A	Handle Blank	024M016VS-1
24C	Handle Knob Cap	024C050
25	Handle Knob	025M050
29	Spool	029L024KG
30	Stand	030 114HL
31	Stand Screw (4 req.)	031T070
31I	Stand Insert (4 req.)	031 I 024KG
32	Screw (2 req.)	032T020
33	Rod Clamp	033 070
34	Rod Clamp Screw (2 req.)	034 070
35	Click Tongue	035 024KG
36	Click Button	036 015KG
37	Top Spacer Bar	037EGLD502
38	Screw (2 req.)	038T130S
38A	Screw (2 req.)	038T050
39	Bridge Cover Screws (2 req.)	039 015KG
41	Spindle Spring	041 024KG
50	Gear Stud Shield	050M015KG
54	Harness Lug (2 req.)	054M024KG
55	Ball Bearing	055 080
55A	Bearing	055 050
55B	Bearing (2 req.)	055 012H
62	Click Spring (2 req.)	062 545
62B	Click Pin (2 req.)	062B525
63	Handle Screw	063 050
63A	Handle Stud Screw	063A050
67	Retaining Ring	067 030VS
69A	Retaining Ring	195 024KG
69B	Retaining Ring (2 req.)	069B050
69C	Retaining Ring	069C245
69D	Retaining Ring	069D024KG
71	Spool Screw	071 024KG
71B	Pinion Sleeve	071B024KG
81	Click Ratchet	081 040
82	Thrust Washer	082 040
82A	Shim	082 024KG
91	Handle Rivet	091N050
95	Click Housing	095 024KG
95A	Click Housing Screw	063 500S
101	Screw (4 req.)	101 030
110A	Lock Ring	110A030VS
110B	Plate	110B030VS
110C	Retaining Collar	110C030VS
119	Shift Plate	119 024KG
123	Bridge Screw	123 800
124	Bridge Cover	124 024KG
128A	Drive Plate	128A024KG
133	Retaining Plate	133 030VS
134	Gear Stud	134 024KG
141	Cam Follower	141 024KG
144	Preset Knob	144M024KG
149	Rod Clamp Nut (2 req.)	149 070
149A	Frame Nut (2 req.)	149 015KG
156	Drag Cover	156 024KG
157A	Spacer Bushing (2 req.)	157 024KG
158	Dog Pin (2 req.)	158 024KG
161	Free Spool Button	161 025
161A	Strike Button	161 040
162	Button Spring (2 req.)	162 050
170	Catch Assembly	170 030VS
171	Shift Plunger	171 015KG
172	Shift Button	172 030VS
172A	Spacer	172A015KG
183	Frame	183M024KG
195	Retaining Ring	195 040

**SPECIFICATIONS AND PRE-SETTING OF DRAG**

	LINE CAPACITY	GEAR RATIO	LINE CLASS	STRIKE SETTING	FULL OR MAX. SETTING
<b>24KG</b>	600yds/50 lb 550M/0,55 mm	3.4-1 HIGH 1.8-1 LOW	50 lb 24 kg	12-17 lbs 5,5-8 kg	21-26 lbs 9,5-12 kg

KEY NO.	DESCRIPTION	PART NO.
1	Right-Side Plate Assembly	001M024KG
2	Quadrant Ring	002M024KG
3	Dog Bridge	003 024KG
4	Thrust Washer	004 024KG
5H	Main Gear (High Speed)	005 024KGHS
5L	Main Gear (Low Speed)	005 024KGLS
6	Drag Washer	006 024KG
7	Metal Drag Washer	007 024KG
13	Pinion Gear	013 024KG
14	Dog Spring (2 req.)	014 015KG
15	Dog (2 req.)	015 015KG