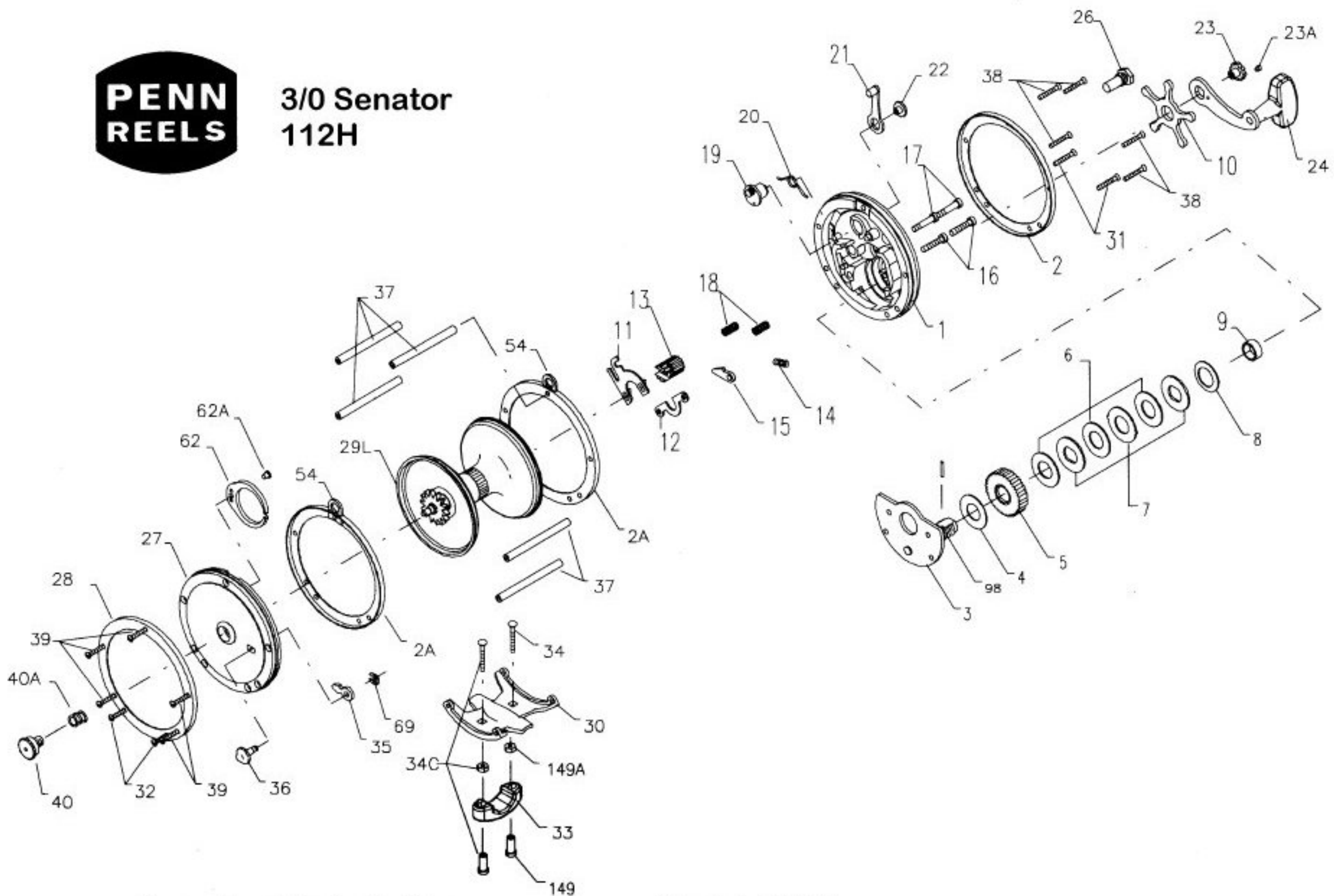




3/0 Senator 112H



Penn Reel Parts list for:

KEY NO	PART NO.	DESCRIPTION
1	1-112H	RIGHT SIDE PLATE
2	2-112H-O	OUTER RIGHT SIDE RING
2A	2-112H-I	INNER RING (2 REQ.)
3	3-112H	BRIDGE W/ SLEEVE
4	4-60	FIBER WASHER
5	5-500	MAIN GEAR
6	6-309	DRAG WASHER (3 REQ.)
7	7C-500	METAL DRAG WASHER SET (3 REQ.)
8	8-60	TENSION SPRING
9	9-60	SPACING SLEEVE
10	10-60	STAR DRAG WHEEL
11	11-99	ECCENTRIC JACK
12	12-500	PINION YOKE
13	13-500	PINION
14	14-99	DOG SPRING
15	15-309	DOG
16	16-60CH	LOWER BRIDGE SCREW (2 REQ.)
17	17-60CH	UPPER BRIDGE SCREW (2 REQ.)
18	18-60	CLUTCH SPRING (2 REQ.)
19	19-250	ECCENTRIC
20	20-60L	ECCENTRIC SPRING
21	21-49	ECCENTRIC LEVER
22	22-99	ECCENTRIC SCREW
23	23-60	HANDLE SCREW
23A	110-60	HANDLE LOCK SCREW
24	24-112H	HANDLE
26	26-155	R.S. BEARING
27	27-112H	LEFT SIDE PLATE
28	28-112H-O	OUTER LEFT SIDE RING
29	29L-112H	SPOOL
30	30-66	STAND
31	39-3	R.S. STAND SCREW (2 REQ.)
32	32-17	L.S. STAND SCREW (2 REQ.)
33	33-113	ROD CLAMP
	* 33R-200	RINGED ROD CLAMP (OPTIONAL)
34	34-45	CLAMP SCREW (2 REQ.)
34C	34C-45	ROD CLAMP SCREW W/ NUTS
35	35-60	CLICK TOUNGE
36	36N-209	CLICK BUTTON
37	37-65	FRAME POST (5 REQ.)
38	39-9	R.S. SCREW (5 REQ.)
39	39-3	L.S. SCREW (5 REQ.)
40	40-60	L.S. BEARING
41	41-60	L.S. BEARING SPRING
62	62-309	CLICK SPRING
62A	63-209	CLICK SPRING SCREW
69	69B-600	RETAINING RING
98	98-60	GEAR SLEEVE
149	149-45	ROD CLAMP NUT (2 REQ.)
149A	149-200	HEX NUT (2 REQ.)

Model: 112H

KEY NO	PART NO.	DESCRIPTION
24	24-112H	HANDLE
26	26-155	R.S. BEARING
27	27-112H	LEFT SIDE PLATE
28	28-112H-O	OUTER LEFT SIDE RING
29	29L-112H	SPOOL
30	30-66	STAND
31	39-3	R.S. STAND SCREW (2 REQ.)
32	32-17	L.S. STAND SCREW (2 REQ.)
33	33-113	ROD CLAMP
	* 33R-200	RINGED ROD CLAMP (OPTIONAL)
34	34-45	CLAMP SCREW (2 REQ.)
34C	34C-45	ROD CLAMP SCREW W/ NUTS
35	35-60	CLICK TOUNGE
36	36N-209	CLICK BUTTON
37	37-65	FRAME POST (5 REQ.)
38	39-9	R.S. SCREW (5 REQ.)
39	39-3	L.S. SCREW (5 REQ.)
40	40-60	L.S. BEARING
41	41-60	L.S. BEARING SPRING
62	62-309	CLICK SPRING
62A	63-209	CLICK SPRING SCREW
69	69B-600	RETAINING RING
98	98-60	GEAR SLEEVE
149	149-45	ROD CLAMP NUT (2 REQ.)
149A	149-200	HEX NUT (2 REQ.)

*Not Shown