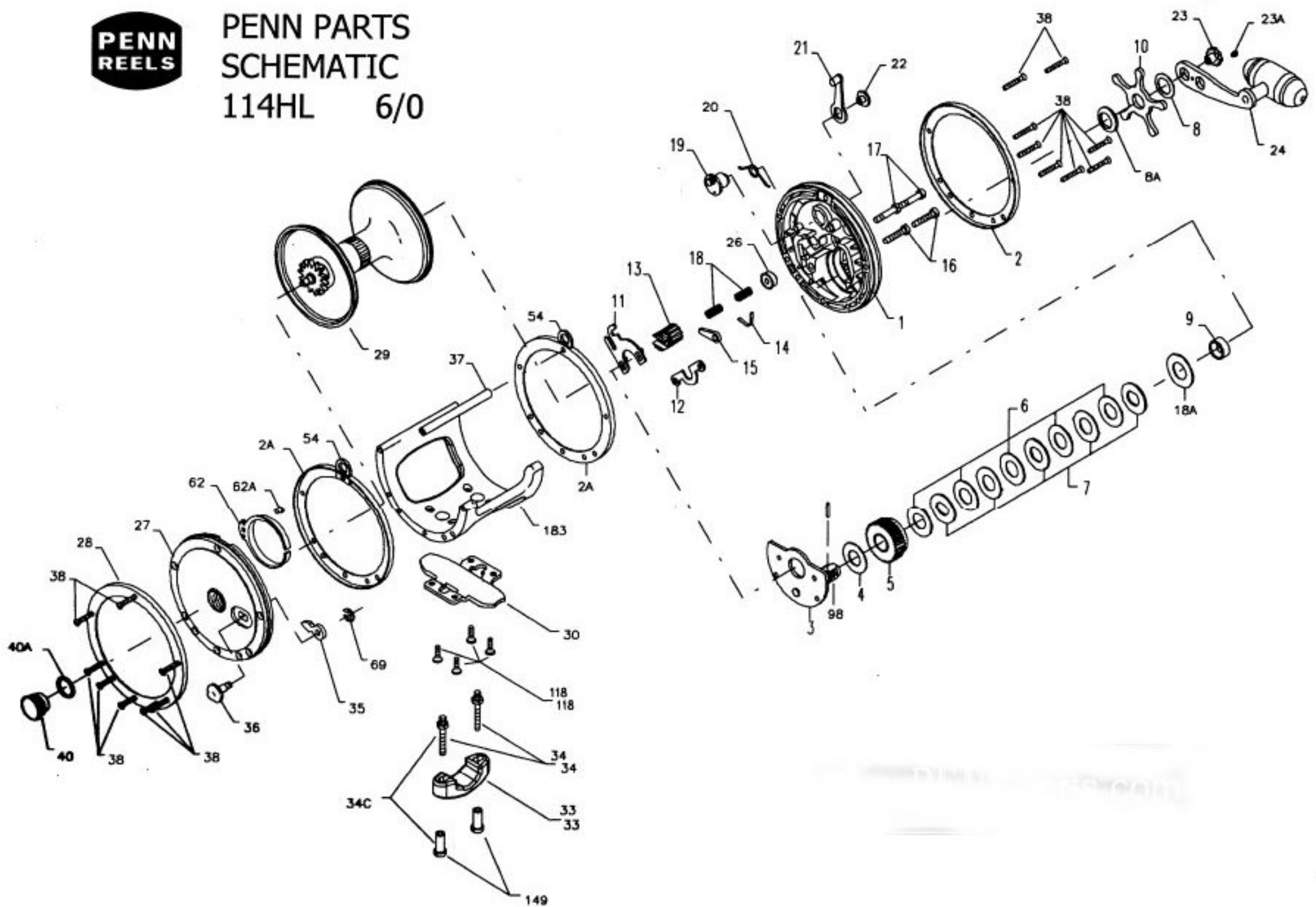




**PENN PARTS  
SCHEMATIC  
114HL 6/0**



**Penn Reel Parts list for:**

KEY NO	PART NO.	DESCRIPTION
1	1-114H	RIGHT SIDE PLATE
2	2-114H-O	OUTER RIGHT SIDE RING
2A	2-114-I	INNER SIDE RING (2 REQ.)
3	3-114H	BRIDGE ASSEMBLY
4	4-115	FIBER WASHER
5	5-115	MAIN GEAR
6	6-115	DRAG WASHER
7	7C-115	METAL WASHER SET
8	8-114	TENSION SPRING (Thin)
8A	8-115	TENSION SPRING (Thick)
9	9-114H	SPACING SLEEVE
10	10-114	STAR DRAG WHEEL
11	11-114	ECCENTRIC JACK
12	12-114	PINION YOKE
13	13-114H	PINION
14	14-114	DOG SPRING
15	15-114H	DOG
16	16-114	LOWER BRIDGE SCREW (2 REQ.)
17	17-114	UPPER BRIDGE SCREW (2 REQ.)
18	18-114	CLUTCH SPRING (2 REQ.)
18A	18-114H	SPRING DISK
19	19-114	ECCENTRIC
20	20-114	ECCENTRIC SPRING
21	21-114	ECCENTRIC LEVER
22	22-60	ECCENTRIC SCREW

**Model: 114HL 6/0 Senator**

KEY NO	PART NO.	DESCRIPTION
23	23-116	HANDLE SCREW
23A	110-60	HANDLE LOCK SCREW
24	24-57	HANDLE
26	26-116	R.S. BEARING
27	27N-114H	LEFT SIDE PLATE
28	2-114-O	OUTER LEFT SIDE RING
29	29L-114HL	SPOOL
30	30-114HL	STAND
33	33-340	ROD CLAMP
34	34-114HLW	ROD CLAMP SCREW (2 REQ.)
35	35-114	CLICK TONGUE
36	36-114H	CLICK BUTTON
37	37-114	FRAME POST
38	39-12	R.S. POST SCREW (8 REQ.)
39	32-21	L.S. POST SCREW (8 REQ.)
40	40-114HL	LEFT SIDE BEARING
40A	120-114H	LEFT SIDE BEARING O-RING
54	54-114	HARNES LUG (2 REQ.)
62	62-114	CLICK SPRING
62A	63-209	CLICK SPRING SCREW
69	69B-600	RETAINING RING
98	98-114	GEAR SLEEVE
118	118-80	STAND SCREWS (4 REQ.)
149	149-45	ROD CLAMP NUT (2 REQ.)
183	183N-114HL	FRAME