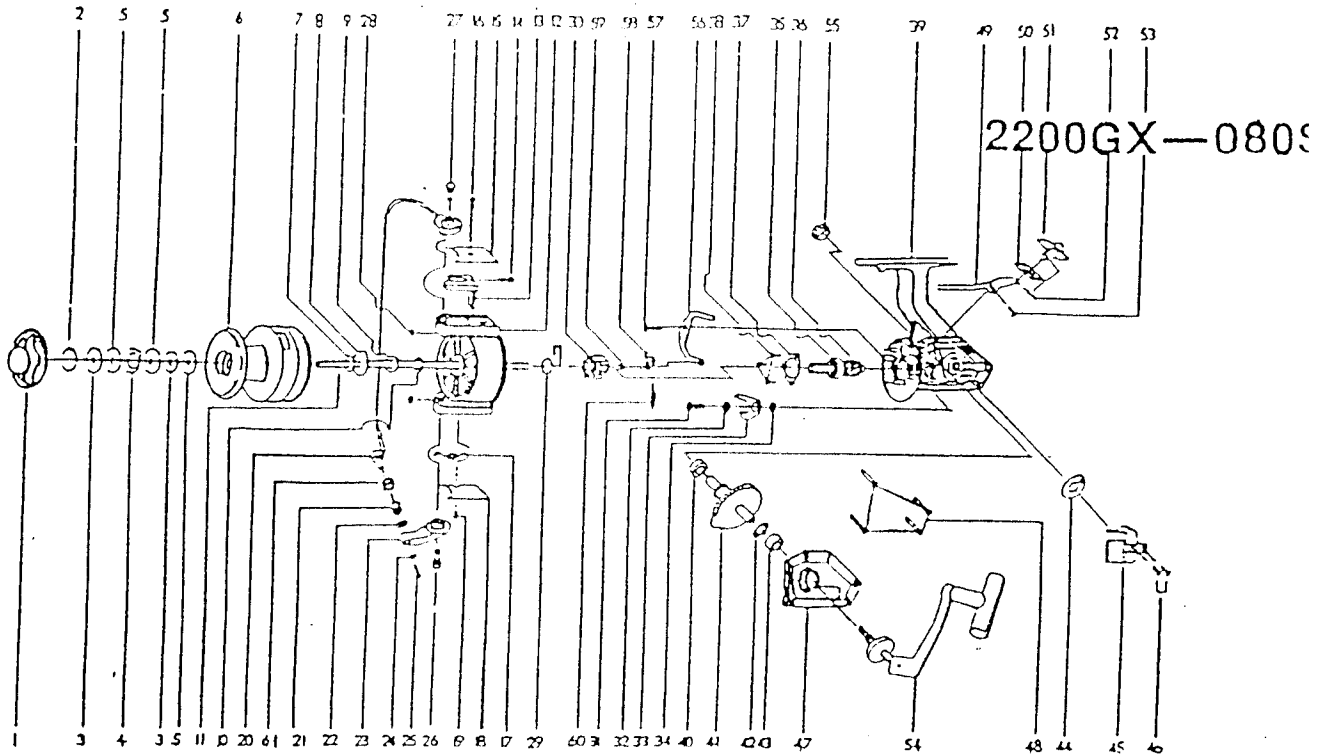


# SIGMA REEL

## 2200GX-080SW



REF

#	PART NUMBER	DESCRIPTION
1	79-40-0177-01	Drag Knob
2	79-54-0120-01	Spool Ring
3	79-72-0587-01	Spool "D" W/S
4	79-72-0610-01	Spool "A" W/S
5	79-72-0604-01	Spool "B" W/S
6	79-66-0248-01	Spool Add'y
7	79-72-0611-01	Spool Ady. W/S
8	79-28-0171-01	Click Gear
9	79-40-0179-01	Rotor Nut
10	79-72-0606-01	Rotor Retainer W/S
11	79-60-0136-01	Main Shafl
12	79-34-0159-01	Rotor
13	79-37-0166-01	Kick Lever
14	79-67-0608-01	Kick Lever Spring
15	79-19-0087-01	Kick Lever Cover
16	79-58-0577-01	Kick L/C S/C
17	79-67-0623-01	Bail Spring
18	79-19-0089-01	Bail Spring Cover
19	79-58-0590-01	Bail Spring C/V S/C
20	79-03-0108-01	Bail Ass'y
21	79-57-0043-01	Line Roller
22	79-17-0014-01	Bail Collar
23	79-07-0077-01	Arm Lever
24	79-72-0607-01	Bail Washer
25	79-58-0594-01	Bail Screw
***26	79-58-0586-01	Arm Lever Pin
27	79-58-0589-01	Bail Hilder Pin
28	79-15-0051-01	E-Clip
29	79-67-0613-01	Sliding Spring "A"
30	79-28-0161-01	Ratchet Gear
31	79-58-0576-01	Anti Rev Stopper
32	79-67-0615-01	Anti Rev S/T S/P
33	79-37-0180-01	Anti Rev Stopper
34	79-09-0025-01	Anti Rev S/T S/P

REF

#	PART NUMBER	DESCRIPTION
35	79-04-0065-01	Ball Bearing
36	79-46-0096-01	Pinlon Gear
37	79-47-0376-01	Bearing Plate
38	79-58-0593-01	Bearing Plate S/C
39	79-27-0168-01	Body
40	79-09-0021-01	Body Bushing
41	79-28-0169-01	Drive Gear
42	79-72-0603-01	Drive Gear Adj W/S
43	79-09-0021-01	Body Cover Bushing
44	79-28-0170-01	Oscilating Gear
45	79-64-0050-01	Oscilating Slider
46	79-58-0583-01	Oscilating Slider S
47	79-19-0097-01	Body Cover
48	79-58-0584-01	Body Cover Screw
49	79-11-0055-01	Anti Rev. Cam
50	79-67-0625-01	Anti Rev. Plate S/P
51	79-37-0175-01	Anti Rev. Lever
52	79-45-0042-01	Anti Rev. Lever Pin
53	79-58-0580-01	Anti Rev. Cam Screw
54	79-20-0142-01	Handle Ass'y
55	79-12-0051-01	Handle Cap Screw
61	79-09-0026-01	Line Roller Bushing



*Shakespeare*®

SINCE 1897