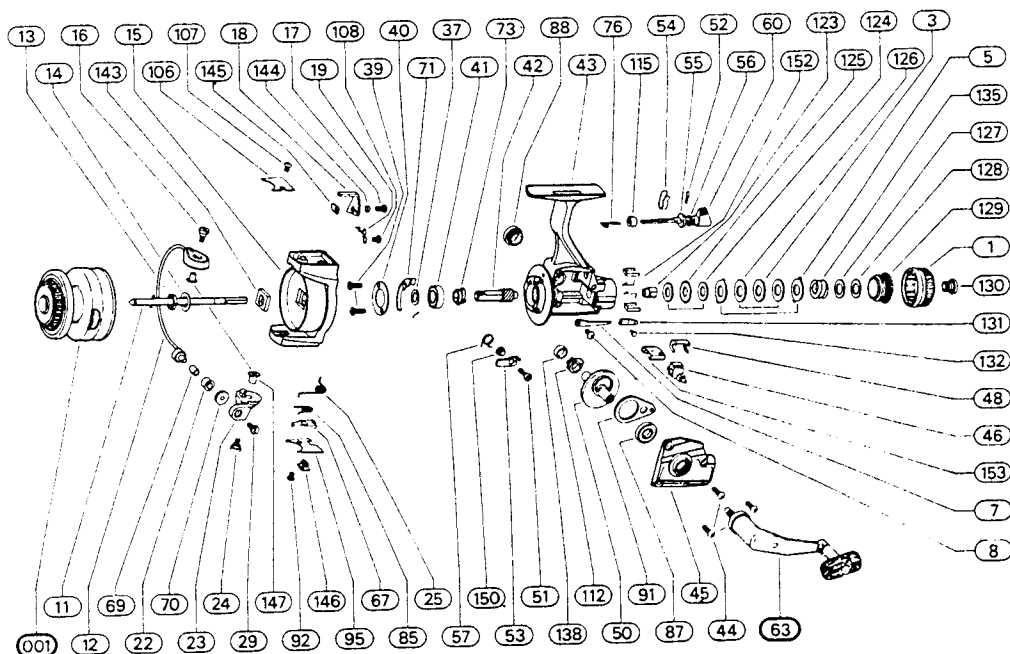


Shakespeare®



| REF. NO. | PART NO.      | DESCRIPTION        | REF. NO. | PART NO.      | DESCRIPTION           |
|----------|---------------|--------------------|----------|---------------|-----------------------|
| 1        | 79-40-0084-01 | Drag Nut           | 67       | 79-37-0082-01 | Bail Fold Lever       |
| 3        | 79-72-0242-01 | Metal Washer       | 69       | 79-63-0010-01 | Line Roller Sleeve    |
| 5        | 79-72-0243-01 | Eared Washer       | 70       | 79-21-0010-01 | Line Roller Cup       |
| 7        | 79-67-0157-01 | Click Spring       | 71       | 79-08-0016-01 | Bail Brake            |
| 8        | 79-58-0275-01 | Click Screw        | 73       | 79-50-0036-01 | Ratchet               |
| 11       | 79-60-0070-01 | Main Shaft         | 76       | 79-02-0029-01 | Throwout Arm          |
| 12       | 79-03-0049-01 | Bail Wire          | 85       | 79-67-0155-01 | Release Button Spring |
| 13       | 79-40-0001-01 | Pickup Nut         | 87       | 79-04-0016-01 | Ball Bearing          |
| 14       | 79-72-0246-01 | Pickup Nut Washer  | 88       | 79-12-0008-01 | Crank Cap             |
| 15       | 41/30-15      | Pickup Housing     | 91       | 79-37-0078-01 | Level Wind Lever      |
| 16       | 79-58-0268-01 | Bail Screw         | 92       | 79-58-0279-01 | Plate Screw           |
| 17       | 79-58-0270-01 | Trip Lever Screw   | 95       | 79-47-0204-01 | Bail Spring Plate     |
| 18       | 79-37-0079-01 | Trip Lever         | 106      | 79-47-0206-01 | Trip Lever Plate      |
| 19       | 79-67-0037-01 | Trip Lever Spring  | 107      | 79-58-0274-01 | Plate Screw           |
| 22       | 79-57-0007-01 | Line Roller        | 108      | 79-58-0278-01 | Trip Spring Screw     |
| 23       | 79-07-0042-01 | Bail Bracket       | 112      | 79-11-0035-01 | Silent N/R Cam        |
| 24       | 79-58-0268-01 | Bail Bracket Screw | 115      | 79-02-0028-01 | Silent A/R Arm        |
| 25       | 79-67-0160-01 | Bail Spring        | 123      | 79-61-0002-01 | Drag Shaft            |
| 29       | 79-58-0280-01 | Roller Screw       | 124      | 79-72-0245-01 | Vinyl Washer          |
| 37       | 79-72-0363-01 | Metal Washer       | 125      | 79-72-0241-01 | Latch Washer          |
| 39       | 79-58-0277-01 | Retainer Screw     | 126      | 79-72-0244-01 | Fiber Washer          |
| 40       | 79-53-0047-01 | Bearing Retainer   | 127      | 79-72-0240-01 | Metal Washer          |
| 41       | 79-04-0001-01 | Ball Bearing       | 128      | 79-72-0239-01 | Nylon Washer          |
| 42       | 79-46-0063-01 | Pinion             | 129      | 79-50-0029-01 | Drag Ratchet          |
| 43       | 41/30-43      | Frame Assembly     | 130      | 79-58-0163-01 | Drag Knob Screw       |
| 44       | 79-58-0273-01 | Cover Screw        | 131      | 79-37-0085-01 | Lever                 |
| 45       | 42/30-45      | Cover Plate        | 132      | 79-45-0021-01 | Lever Pin             |
| 46       | 79-75-0047-01 | Level Wind Yoke    | 135      | 79-67-0091-01 | Drag Spring           |
| 48       | 79-15-0023-01 | Retainer Clip      | 138      | 79-65-0008-01 | N/R Cam Spacer        |
| 50       | 79-28-0098-01 | Drive Gear         | 143      | 79-72-0362-01 | P/U Nut Washer        |
| 51       | 79-58-0276-01 | N/R Pawl Screw     | 144      | 79-09-0010-01 | Trip Lever Bushing    |
| 52       | 79-15-0022-01 | Retainer Clip      | 145      | 79-65-0006-01 | Trip Lever Spacer     |
| 53       | 79-43-0084-01 | A/R Pawl           | 146      | 79-10-0044-01 | Bail Fold Button      |
| 54       | 79-67-0163-01 | A/R Cam Spring     | 147      | 79-63-0025-01 | Threaded Sleeve       |
| 55       | 79-11-0033-01 | A/R Cam            | 150      | 79-65-0009-01 | N/R Pawl Spacer       |
| 56       | 79-72-0365-01 | A/R Cam Washer     | 152      | 79-49-0001-01 | Housing Protector     |
| 57       | 79-67-0152-01 | N/R Spring         | 153      | 79-15-0020-01 | Level Wind Ret. Cl.   |
| 60       | 79-60-0069-01 | A/R Shaft          | 001      | 41/30-001     | Spool Assembly        |
| 63       | 42/30-63      | Crank Assembly     |          |               |                       |