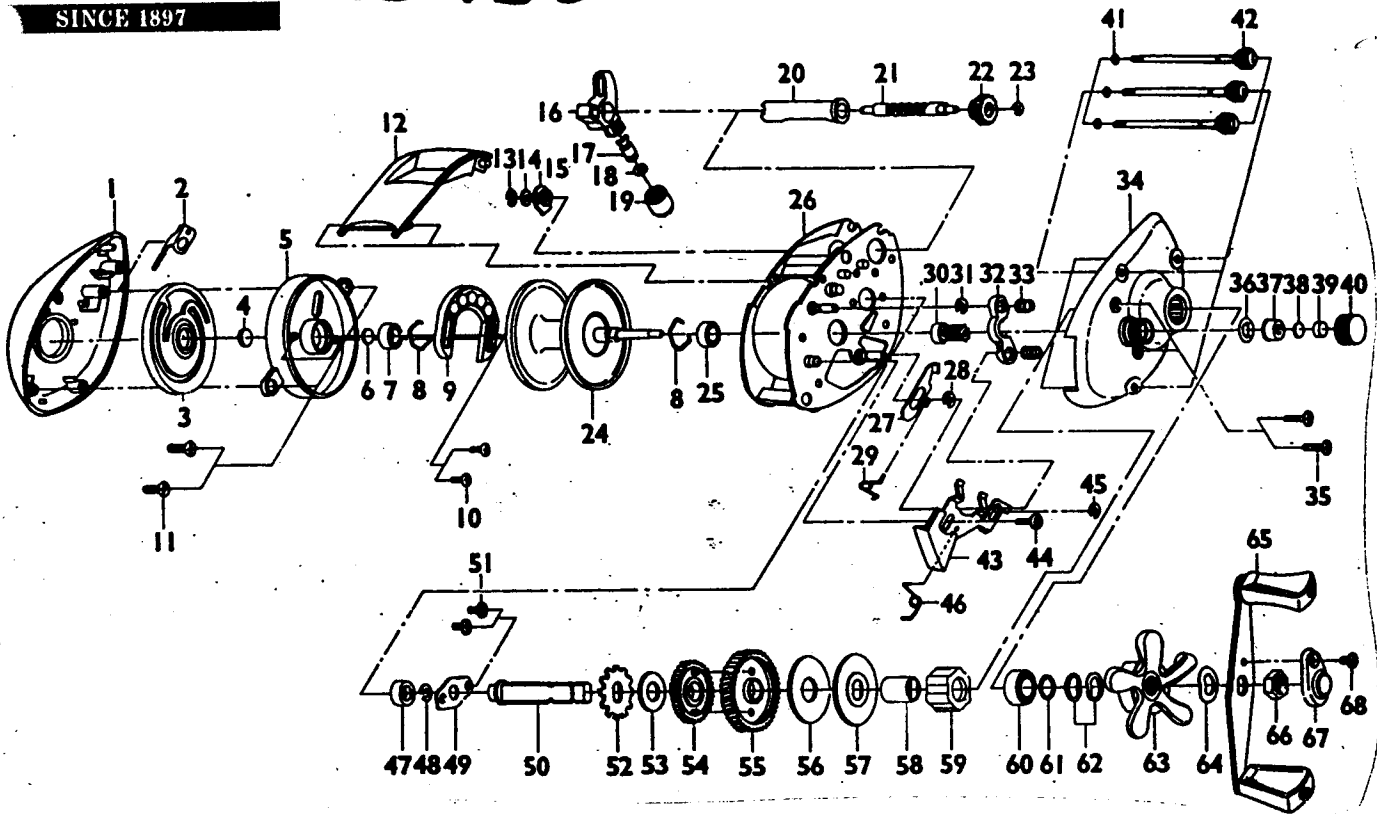


Shakespeare

SINCE 1897

SS 430

Part #SS430



Key No.	Part No.	Description	Key No.	Part No.	Description
1	6K198604	Left Side Cover	35	6K177202	Screw (R/S Cover)
2	6K198701	Clicker	36	6K176501	Tension Knob Ring
3	6K199201	Magnet Control Dial	37	6K176801	Bearing
4	6K181101	Cushion Washer	38	6K164601	Washer-Spool Tension
5	6K198801	Spool Cover	39	6K181101	Cushion Washer-Spool
6	6K164601	Spool Tension Shim	40	6K181201	Spool Tension Knob
7	6K170601	Bearing	41	6K176401	Ring-Thumb Screw Ret.
8	6K170701	Clip Ring	42	6K176201	Thumb Screw
9	6K198901	Magnet Slider Assembly	43	6K196301	Release Slider Assembly
10	6K532501	Screw-Magnet Slider	44	6K171401	Screw Release Slider
11	6K120202	Screw-Spool Cover	45	63201402	E-Ring Release Slider
12	6K197404	Hood	46	<del>6K176301</del>	Spring-Release Slider
13	63205901	E-Ring (Worm Shaft)	47	6K185401	Bearing-Crankshaft
14	6K164403	Washer (Worm Shaft)	48	63201402	E-Ring-Crankshaft
15	6K172201	Worm Shaft Bushing	49	6K172701	Retainer-Crankshaft
16	6K196601	Line Guide Carrier	50	6K172601	Crankshaft
17	6K172401	Line Guide Pawl	51	6K173001	Screw-Crankshaft Retainer
18	6K164402	Washer (L/G Pawl)	52	6K174401	Trip Ratchet
19	6K172502	Line Guide Carrier Screw	53	6K185201	Washer
20	6K171601	Worm Shaft Guide	54	6K174601	Gear-L/W Idler
21	6K172001	Worm Shaft	55	6K174801	Drive Gear
22	6K172101	Level Wind Gear	56	6K174901	Drag Disc
23	6B339801	E-Ring (L/W Gear)	57	6K175001	Drag Washer
24	6K178101	Spool Assembly	58	6K175201	Clutch Sleeve
25	6K170601	Bearing	59	6K175301	Anti-Reverse Clutch
26	6K196201	Frame	60	6K582201	Bearing-Crankshaft Top
27	6K170901	Kick Lever	61	6K177302	Washer-Crankshaft
28	63201402	E-Ring (Kick Lever)	62	6K160702	Spring D Washer
29	6K171501	Spring-Kick Lever	63	6K197801	Drag Star
30	6K174001	Pinion Gear	64	6K161401	Handle Washer
31	63201402	E-Ring	65	6K197901	Handle Assembly
32	6K173801	Pinion Yoke	66	6K178303	Handle Nut
33	6K175701	Spring-Pinion Yoke	67	6K162101	Handle Nut Cap
34	6K197701	Right Side Cover	68	63511801	Handle Nut Cap Screw