

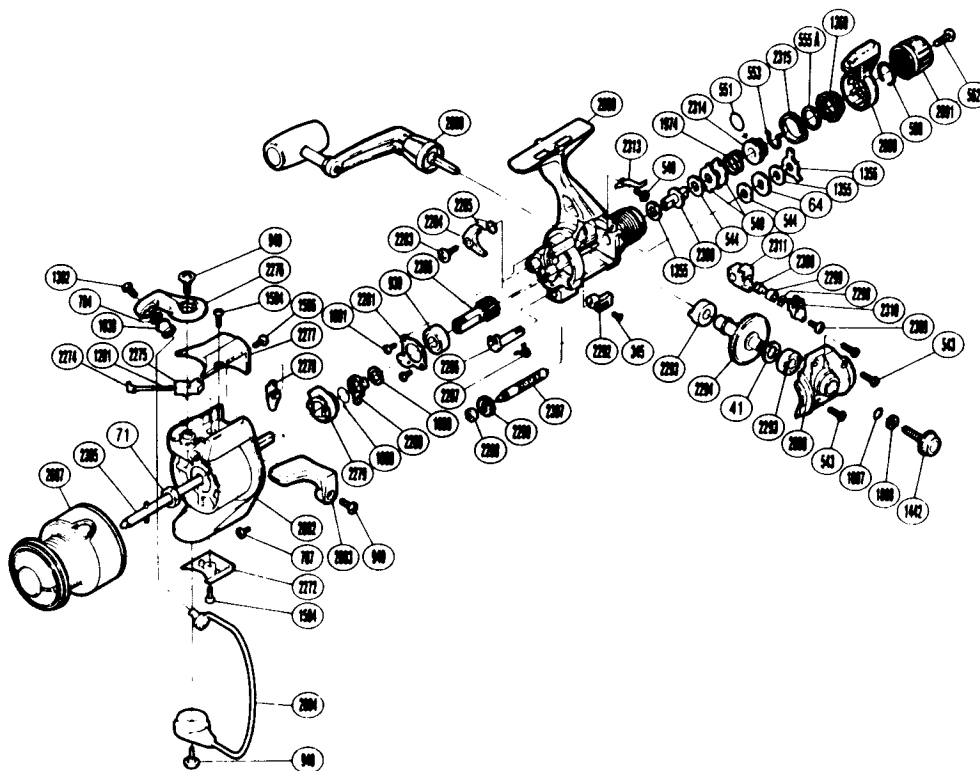
**EXPLODED PARTS VIEW**

**BA AERO**  
**2-6#**

**SHIMANO®**

**1990 REPAIR MANUAL**

Shimano American Corporation, One Shimano Dr.  
Irvine, CA 92718



**TO ORDER: USE RD PREFIX  
WITH PART NUMBER**

**PARTS LIST**

RD #	DESCRIPTION	RD #	DESCRIPTION	RD #	DESCRIPTION
0041	Drive Gear Washer	1360	Fightin' Pressure Screw	2293	Drive Gear Bushing
0064	Click Gear	1442	Handle Screw Cap	2294	Drive Gear
0071	Rotor Nut	1504	Bail Hold Cover Screw	2298	Spacer
0345	Anti-Reverse Lever Screw	1506	Bail Spring Cover Screw	2299	Oscillating Slider Bushing
0540	Anti-Reverse Pawl Screw	1888	Anti-Reverse Lock Out Spring	2300	Oscillating Pawl
0543	Side Cover Screw (B)	1890	Bushing Washer	2305	Main Shaft
0544	Drag Washer "C2" (White)	1891	Multi Purpose Screw	2306	Pinion Gear
0549	Eared Washer "B"	1974	Drag Coil Spring	2307	Worm Shaft
0551	"O" Ring	2272	Rotor Side Cover	2309	Slider Retainer Screw
0553	Hold Click Spring	2274	Bail Spring Guide (A)	2310	Oscillating Slider Retainer
0555A	Fightin' Pressure Screw Washer	2275	Bail Spring Guide (B)	2311	Oscillating Slider
0560	Lever Hold Spring	2276	Bail Arm	2313	Drag Click
0562	Drag Programmer Screw	2277	Bail Spring Cover	2314	Pressure Screw
0784	Line Roller Washer	2278	Bail Trip Lever	2315	Lever Click Gear
0787	Nut Lock Screw	2279	Anti-Reverse Ratchet	2380	Drag Shaft
0930	Ball Bearing	2280	Anti-Reverse Lock Out	2669	Handle Assembly
0940	Bail Trip Cam Screw	2281	Bearing Retainer	2682	Rotor
0949	Trigger Screw	2283	Anti-Reverse Pawl Screw	2683	Quick-Fire II Trigger
1007	Lock Washer Retainer	2284	Anti-Reverse Pawl	2684	Bail Assembly
1008	Handle Lock Washer	2285	Anti-Reverse Pawl Spring	2687	Spool Assembly
1038	Sic Ceramic Roller	2286	Anti-Reverse Cam	2688	Side Cover
1201	Bail Spring	2287	Anti-Reverse Cam Spring	2689	Body
1302	Line Roller Screw	2288	Worm Bearing	2690	Fightin' Drag II Lever
1355	Drag Washer "C1"	2290	Idle Gear	2691	Drag Programmer
1356	Eared Washer "BF"	2292	Anti-Reverse Lever		

Prices and specifications subject to change without notice.

1/1990