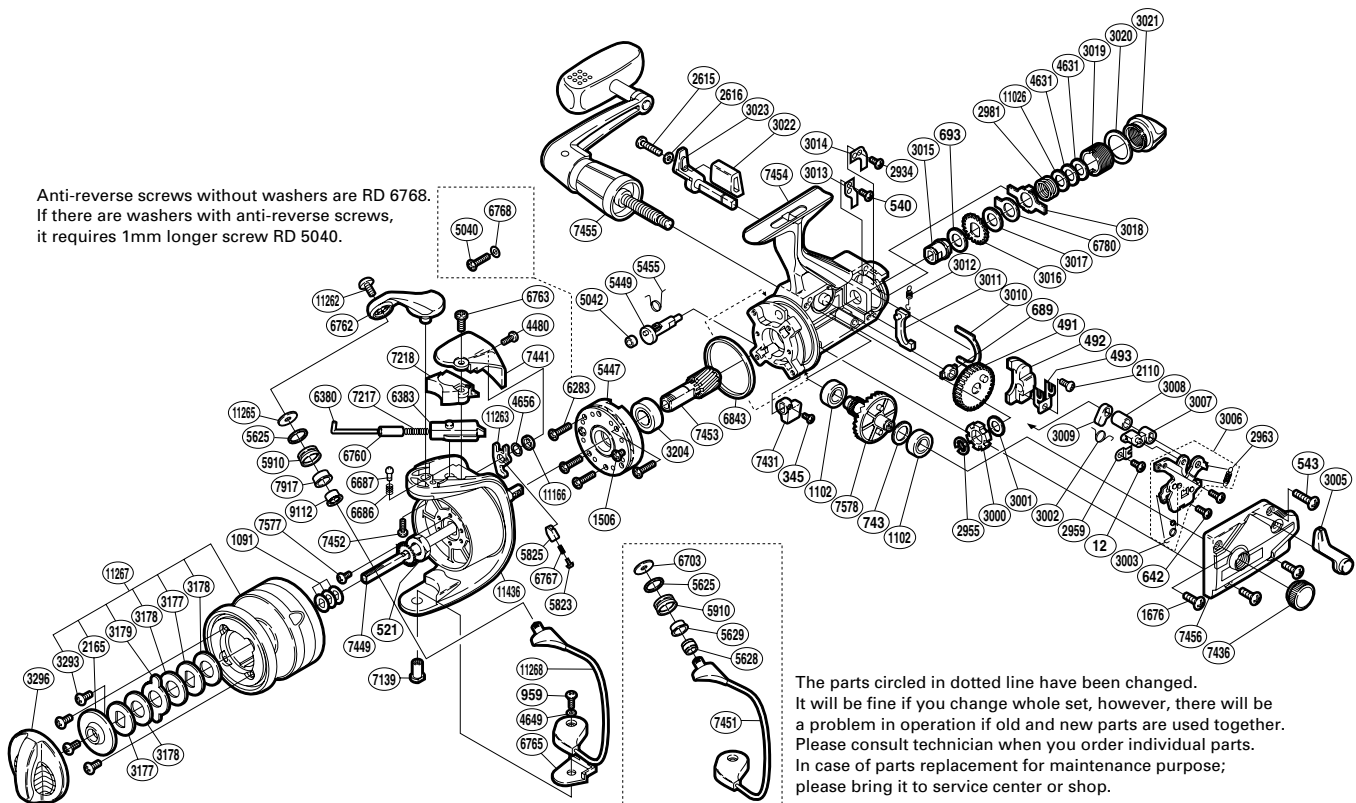


SHIMANO

BAITRUNNER

BTR-4500B



Anti-reverse screws without washers are RD 6768.
If there are washers with anti-reverse screws,
it requires 1mm longer screw RD 5040.

The parts circled in dotted line have been changed.
It will be fine if you change whole set, however, there will be
a problem in operation if old and new parts are used together.
Please consult technician when you order individual parts.
In case of parts replacement for maintenance purpose;
please bring it to service center or shop.

(1SD994501U)

| Part No. | Description | Part No. | Description | Part No. | Description |
|----------|-------------------------------|----------|-------------------------------|----------|--|
| RD 0012 | Shaft Retainer Screw | RD 3011 | BaitRunner Pawl | RD 6762 | Bail Arm |
| RD 0345 | Anti-Reverse Lever Screw | RD 3012 | BaitRunner Pawl Spring | RD 6763 | Bail Spring Cover Screw (A) |
| RD 0491 | Oscillating Gear | RD 3014 | Dial Click | RD 6765 | Bail Hold Support Spacer |
| RD 0492 | Oscillating Slider | RD 3013 | BaitRunner Pawl Guide | RD 6767 | Bail Trip Lever Spring |
| RD 0493 | Oscillating Slider Retainer | RD 3015 | Free Spool Tension Shaft | RD 6780 | Single Eared Washer |
| RD 0521 | Rotor Nut | RD 3016 | Click Gear | RD 6843 | Friction Ring |
| RD 0540 | Pawl Guide Screw | RD 3017 | Free Spool Tension Washer (B) | RD 7139 | Bail Hold Support Shaft |
| RD 0543 | Side Cover Screw (B) | RD 3018 | Eared Washer "Bfs" | RD 7217 | Bail Spring |
| RD 0642 | Clutch Plate Screw | RD 3019 | Free Spool Tension Screw | RD 7218 | Bail Spring Cover |
| RD 0689 | Oscillating Gear Bushing | RD 3020 | Dial Spacer | RD 7431 | Anti-Reverse Lever |
| RD 0693 | Free Spool Tension Washer (A) | RD 3021 | BaitRunner Tension Dial | RD 7436 | Handle Screw Cap |
| RD 0743 | Drive Gear Washer | RD 3022 | BaitRunner Lever Bridge | RD 7441 | Bail Spring Cover Guard |
| RD 0959 | Bail Hold Support Screw | RD 3023 | BaitRunner Lever Arm (R) | RD 7449 | Main Shaft |
| RD 1091 | Spool Washer | RD 3177 | Key Washer | RD 7452 | Bail Arm Screw |
| RD 1102 | Ball Bearing | RD 3178 | Drag Washer | RD 7453 | Pinion Gear |
| RD 1506 | Clutch Cover Screw | RD 3179 | Eared Washer | RD 7454 | Body Assembly |
| RD 1676 | Side Cover Screw (A) | RD 3204 | Ball Bearing | RD 7455 | Handle Assembly |
| RD 2110 | Slider Retainer Screw | RD 3293 | Seal Plate Screw | RD 7456 | Side Cover |
| RD 2165 | Seal Plate | RD 3296 | Drag Knob | RD 7577 | Nut Lock Screw |
| RD 2615 | BaitRunner Lever Screw | RD 4480 | Bail Spring Cover Screw (B) | RD 7578 | Drive Gear |
| RD 2616 | Lock Washer | RD 4631 | Tension Spring Washer "B" | RD 7917 | Line Roller Bushing |
| RD 2934 | Dial Click Screw | RD 4649 | Spacer | RD 9112 | Line Roller Collar |
| RD 2955 | "C" Lock | RD 4656 | Bail Trip Lever Washer | RD11166 | Spacer |
| RD 2959 | Lever Shaft Retainer | RD 5042 | Anti-Reverse Cam Ring | RD11262 | Line Roller Screw |
| RD 2963 | BaitRunner Click Spring | RD 5447 | Roller Clutch Assembly | RD11263 | Bail Trip Lever |
| RD 2981 | Free Spool Tension Spring | RD 5449 | Anti-Reverse Cam | RD11265 | Line Roller Washer |
| RD 2999 | Drive Gear Spacer | RD 5455 | Anti-Reverse Cam Spring | RD11267 | Spool Assembly |
| RD 3000 | BaitRunner Ratchet | RD 5625 | Line Roller Spacer | RD11268 | Bail Assembly |
| RD 3001 | Ratchet Spacer | RD 5823 | Lever Spring Guide (A) | RD11436 | Rotor |
| RD 3002 | Clutch Spring | RD 5825 | Lever Spring Guide (B) | | |
| RD 3003 | Clutch Pawl Spring | RD 5910 | Line Roller | | |
| RD 3005 | BaitRunner Lever Arm (L) | RD 6283 | Roller Clutch Screw | RD 5040 | Roller Clutch Screw (before change) |
| RD 3006 | Clutch Plate Assembly | RD 6380 | Bail Spring Guide (A) | RD 5628 | Line Roller Collar (before change) |
| RD 3007 | Clutch Arm | RD 6383 | Bail Spring Guide (B) | RD 5629 | Line Roller Bushing (before change) |
| RD 3008 | Clutch Cam Spacer | RD 6686 | Bail Arm Click Spring | RD 6703 | Line Roller Washer (before change) |
| RD 3009 | Clutch Cam | RD 6687 | Bail Arm Click | RD 6768 | Roller Clutch Screw Washer (before change) |
| RD 3010 | Dial Retainer | RD 6760 | Bail Spring Guide (A) Collar | RD 7451 | Bail Assembly (before change) |

(190315)