

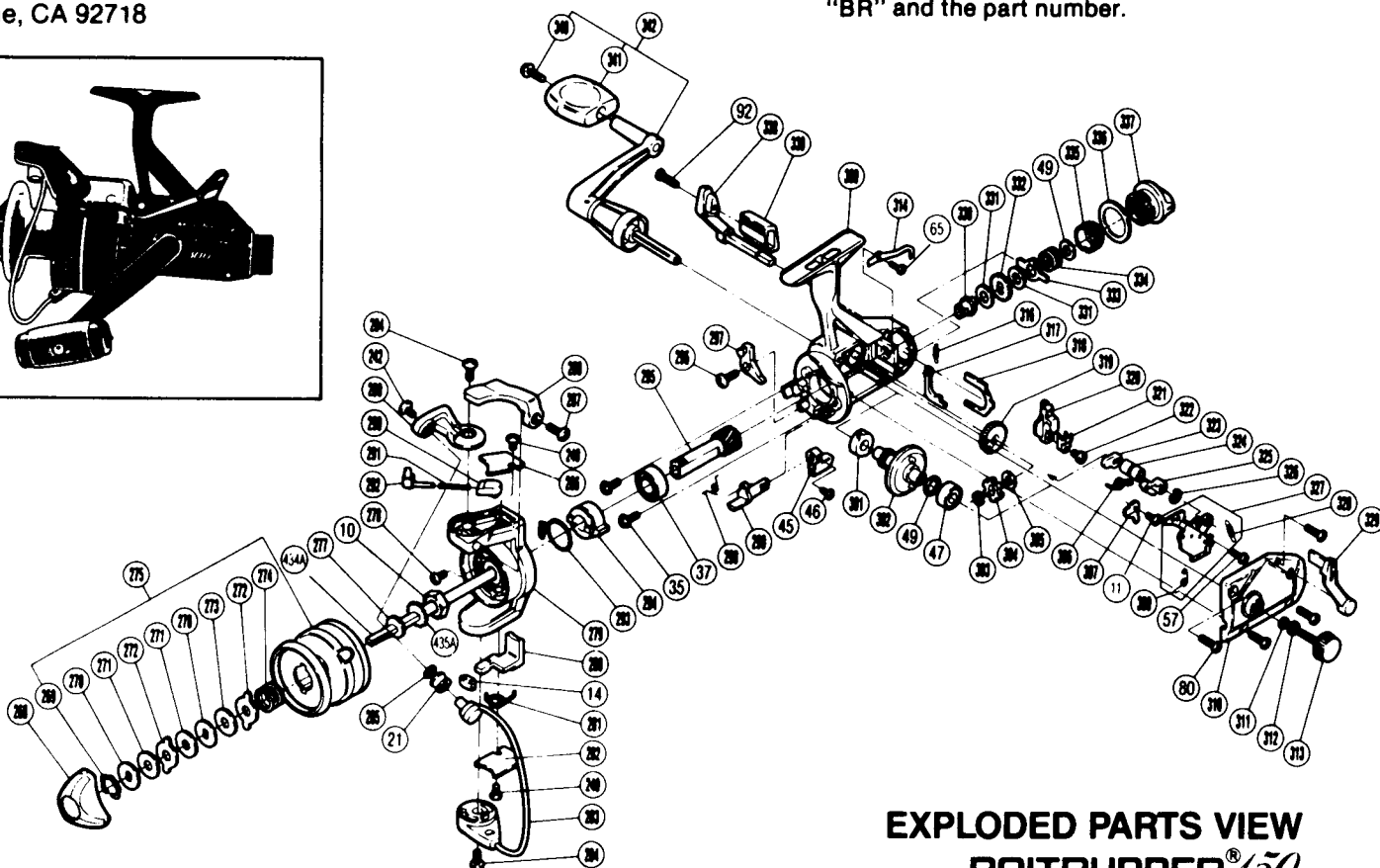
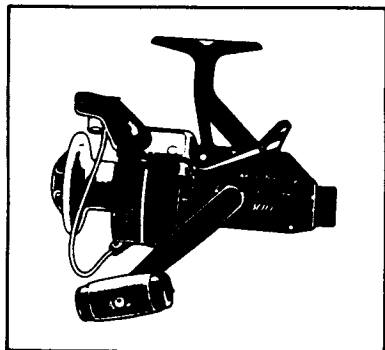
SHIMANO®

1987 REPAIR MANUAL

Shimano American Corporation, One Shimano Dr.
Irvine, CA 92718

TO ORDER:

This reel belongs to the "BaitRunner" series.
Please order parts using the abbreviation
"BR" and the part number.



PARTS LIST

EXPLODED PARTS VIEW BAITRUNNER® 150

PART # DESCRIPTION

- 10. Rotor Nut
- 11. Multipurpose Screw
- 14. Bail Trip Slide Cam
- 21. Line Roller
- 35. Bearing Retainer Screw
- 37. Ball Bearing
- 45. Anti-Reverse Lever
- 46. Anti-Reverse Lever Screw
- 47. Ball Bearing
- 49. Drive Gear Washer
- 57. Clutch Plate Screw
- 65. Dial Click Screw
- 80. Side Cover Screw B
- 92. Baitrunner Lever Screw
- 240. Bail Trip Cover Screw
- 242. Line Roller Screw
- 268. Drag Knob
- 269. Drag Washers Retainer
- 270. Key Washer
- 271. Drag Washer 1
- 272. Spool Washer
- 273. Drag Washer 2
- 274. Drag Spring
- 275. Spool Assembly
- 277. Spool Washer
- 278. Nut Lock Screw
- 279. Rotor
- 280. Bail Trip Lever
- 281. Lever Spring
- 282. Bail Trip Cover

PART # DESCRIPTION

- 283. Bail Assembly
- 284. Bail Trip Cam Screw
- 285. Line Roller Washer
- 286. Bail Spring Cover
- 287. Trigger Screw
- 288. Quick-Fire II Trigger
- 289. Bail Arm
- 290. Bail Spring Guide B
- 291. Bail Spring
- 292. Bail Spring Guide A
- 293. Anti-Reverse Pawl Spring
- 294. Anti-Reverse Ratchet
- 295. Pinion Gear
- 296. Anti-Reverse Pawl Screw
- 297. Anti-Reverse Pawl
- 298. Anti-Reverse Cam Spring
- 299. Anti-Reverse Cam
- 300. Body
- 301. Bushing
- 302. Drive Gear
- 303. "C" Lock
- 304. Baitrunner Ratchet
- 305. Ratchet Spacer
- 306. Clutch Spring
- 307. Baitrunner Pawl Guide
- 309. Clutch Pawl Spring
- 310. Side Cover
- 311. Lock Washer Retainer
- 312. Handle Lock Washer
- 313. Handle Screw Cap

PART # DESCRIPTION

- 314. Dial Click
- 316. Baitrunner Pawl Spring
- 317. Baitrunner Pawl
- 318. Dial Retainer
- 319. Oscillating Gear
- 320. Oscillating Slider
- 321. Oscillating Slider Retainer
- 322. Slider Retainer Screw
- 323. Clutch Cam
- 324. Clutch Cam Spacer
- 325. Clutch Arm
- 326. Lever Shaft Retainer
- 327. Clutch Plate Assembly
- 328. Baitrunner Click Spring
- 329. Baitrunner Lever Arm (L)
- 330. Free Spool Tension Shaft
- 331. Free Spool Tension Washer
- 332. Click Gear
- 333. Eared Washer "BFS"
- 334. Free Spool Tension Spring
- 335. Free Spool Tension Screw
- 336. Dial Spacer
- 337. Baitrunner Tension Dial
- 338. Baitrunner Lever Arm (R)
- 339. Baitrunner Lever Bridge
- 340. Handle Knob Screw
- 341. Handle Knob
- 342. Handle Assembly
- 434A. Main Shaft
- 435A. Spool Support

Prices and specifications subject to change without notice.

JUNE 1986