

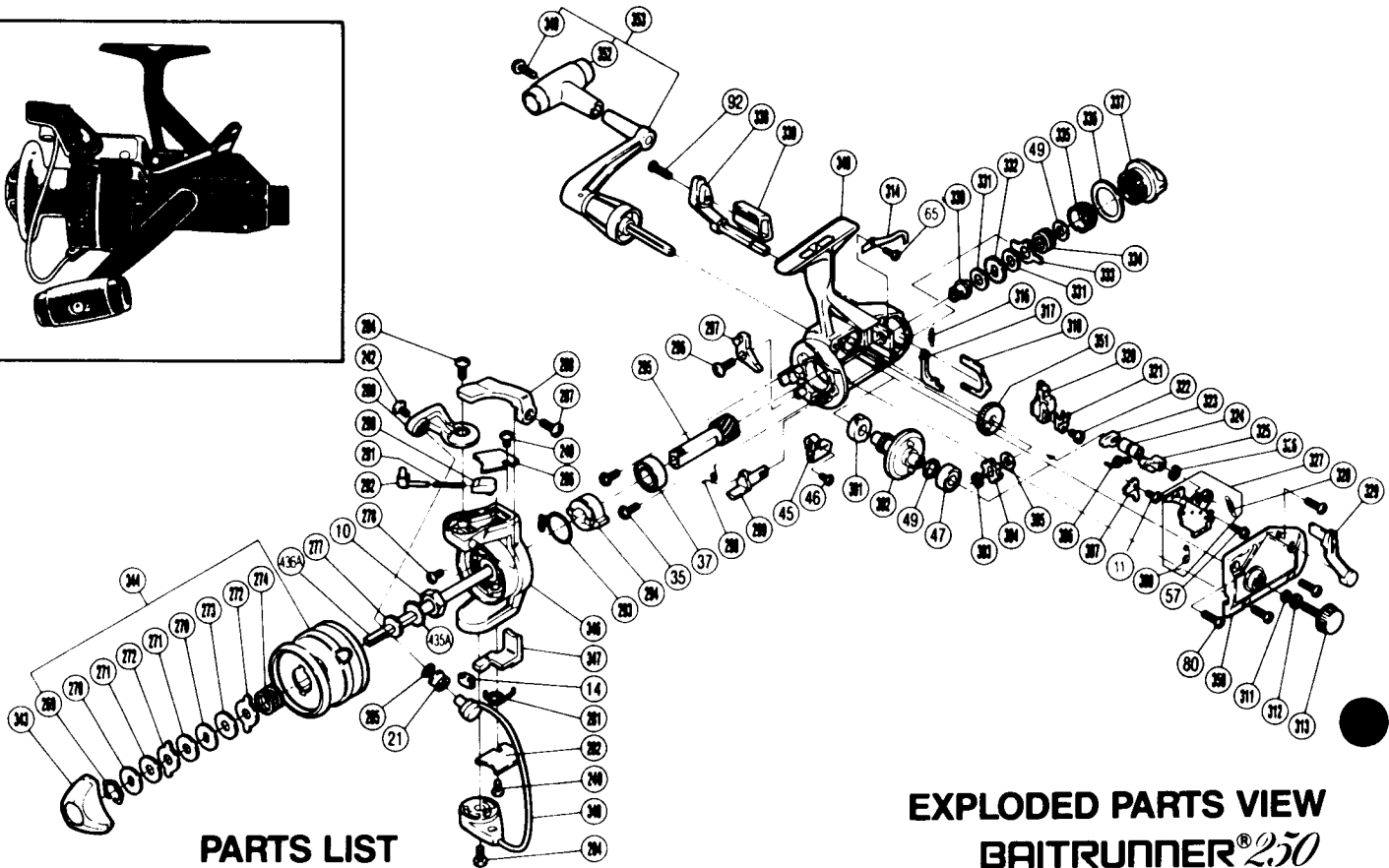
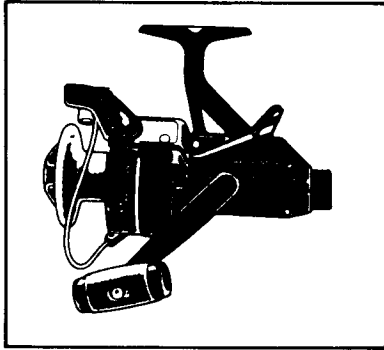
SHIMANO®

1987 REPAIR MANUAL

Shimano American Corporation, One Shimano Dr.
Irvine, CA 92718

TO ORDER:

This reel belongs to the "BaitRunner" series.
Please order parts using the abbreviation
"BR" and the part number.



PARTS LIST

EXPLODED PARTS VIEW BAITRUNNER® 250

PART # DESCRIPTION

| | |
|------|--------------------------|
| 10. | Rotor Nut |
| 11. | Multipurpose Screw |
| 14. | Bail Trip Slide Cam |
| 21. | Line Roller |
| 35. | Bearing Retainer Screw |
| 37. | Ball Bearing |
| 45. | Anti-Reverse Lever |
| 46. | Anti-Reverse Lever Screw |
| 47. | Ball Bearing |
| 49. | Drive Gear Washer |
| 57. | Clutch Plate Screw |
| 65. | Dial Click Screw |
| 80. | Side Cover Screw B |
| 92. | Baitrunner Lever Screw |
| 240. | Bail Trip Cover Screw |
| 242. | Line Roller Screw |
| 269. | Drag Washers Retainer |
| 270. | Key Washer |
| 271. | Drag Washer 1 |
| 272. | Eared Washer |
| 273. | Drag Washer 2 |
| 274. | Drag Spring |
| 277. | Spool Washer |
| 278. | Nut Lock Screw |
| 281. | Lever Spring |
| 282. | Bail Trip Cover |
| 284. | Bail Trip Cam Screw |
| 285. | Line Roller Washer |
| 286. | Bail Spring Cover |
| 287. | Trigger Screw |

PART # DESCRIPTION

| | |
|------|-----------------------------|
| 288. | Quick-Fire II Trigger |
| 289. | Bail Arm |
| 290. | Bail Spring Guide B |
| 291. | Bail Spring |
| 292. | Bail Spring Guide A |
| 293. | Anti-Reverse Pawl Spring |
| 294. | Anti-Reverse Ratchet |
| 295. | Pinion Gear |
| 296. | Anti-Reverse Pawl Screw |
| 297. | Anti-Reverse Pawl |
| 298. | Anti-Reverse Cam Spring |
| 299. | Anti-Reverse Cam |
| 301. | Bushing |
| 302. | Drive Gear |
| 303. | "C" Lock |
| 304. | Baitrunner Ratchet |
| 305. | Ratchet Spacer |
| 306. | Clutch Spring |
| 307. | Baitrunner Pawl Guide |
| 309. | Clutch Pawl Spring |
| 311. | Lock Washer Retainer |
| 312. | Handle Lock Washer |
| 313. | Handle Screw Cap |
| 314. | Dial Click |
| 316. | Baitrunner Pawl Spring |
| 317. | Baitrunner Pawl |
| 318. | Dial Retainer |
| 320. | Oscillating Slider |
| 321. | Oscillating Slider Retainer |
| 322. | Slider Retainer Screw |

PART # DESCRIPTION

| | |
|-------|---------------------------|
| 323. | Clutch Cam |
| 324. | Clutch Cam Spacer |
| 325. | Clutch Arm |
| 326. | Lever Shaft Retainer |
| 327. | Clutch Plate Assembly |
| 328. | Baitrunner Click Spring |
| 329. | Baitrunner Lever Arm (L) |
| 330. | Free Spool Tension Shaft |
| 331. | Free Spool Tension Washer |
| 332. | Click Gear |
| 333. | Eared Washer "BFS" |
| 334. | Free Spool Tension Spring |
| 335. | Free Spool Tension Screw |
| 336. | Dial Spacer |
| 337. | Baitrunner Tension Dial |
| 338. | Baitrunner Lever Arm (R) |
| 339. | Baitrunner Lever Bridge |
| 340. | Handle Knob Screw |
| 343. | Drag Knob |
| 344. | Spool Assembly |
| 346. | Rotor |
| 347. | Bail Trip Lever |
| 348. | Bail Assembly |
| 349. | Body |
| 350. | Side Cover |
| 351. | Oscillating Gear |
| 352. | Handle Knob |
| 353. | Handle Assembly |
| 435A. | Spool Support |
| 436A. | Main Shaft |

Prices and specifications subject to change without notice.

JUNE 1986