

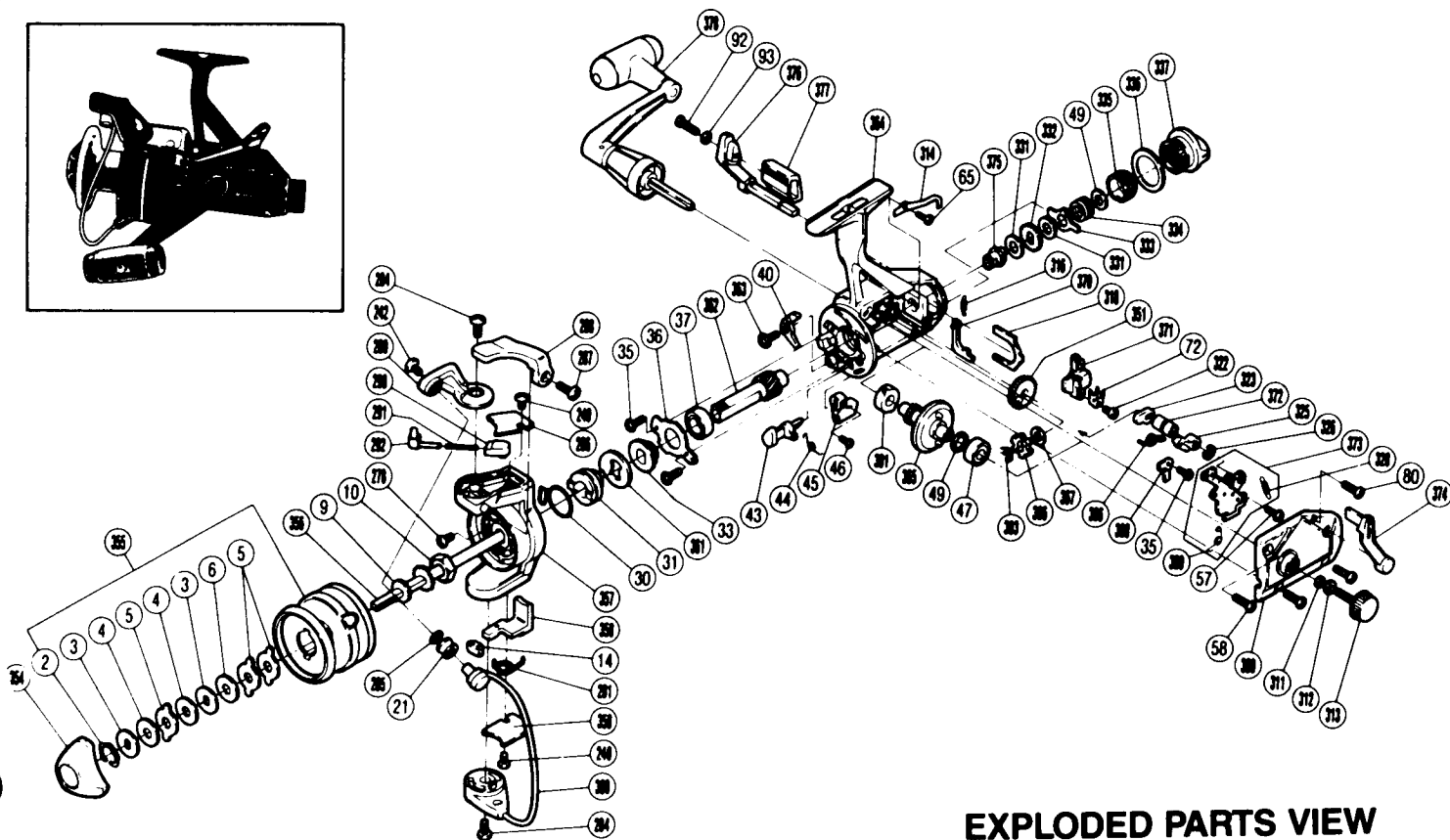
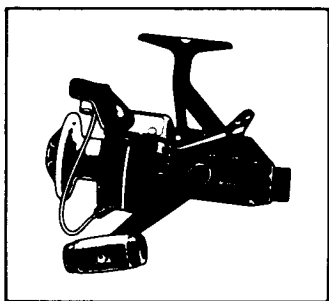
# SHIMANO®

## 1987 REPAIR MANUAL

Shimano American Corporation, One Shimano Dr.  
Irvine, CA 92718

### TO ORDER:

This reel belongs to the "BaitRunner" series.  
Please order parts using the abbreviation  
"BR" and the part number.



### EXPLODED PARTS VIEW BAITRUNNER®300

#### PART # DESCRIPTION

2.	Drag Washers Retainer
3.	Key Washer
4.	Drag Washer 1
5.	Eared Washer
6.	Drag Washer 2
9.	Spool Washer
10.	Rotor Nut
14.	Bail Trip Slide Cam
21.	Line Roller
30.	Anti-Reverse Pawl Spring
31.	Anti-Reverse Spring Holder
33.	Pinion Spacer
35.	Bearing Retainer Screw
36.	Bearing Retainer
37.	Ball Bearing
40.	Anti-Reverse Pawl
43.	Anti-Reverse Cam
44.	Anti-Reverse Cam Spring
45.	Anti-Reverse Lever
46.	Anti-Reverse Lever Screw
47.	Ball Bearing
49.	Drive Gear Washer
57.	Clutch Plate Screw
58.	Side Cover Screw A
65.	Dial Click Screw
72.	Oscillating Slider Retainer
80.	Side Cover Screw B
92.	Baitrunner Lever Screw
93.	Lock Washer
240.	Bail Trip Cover Screw

#### PARTS LIST

PART #	DESCRIPTION
242.	Line Roller Screw
278.	Nut Lock Screw
281.	Lever Spring
284.	Bail Trip Cam Screw
285.	Line Roller Washer
286.	Bail Spring Cover
287.	Trigger Screw
288.	Quick-Fire II Trigger
289.	Ball Arm
290.	Bail Spring Guide B
291.	Bail Spring
292.	Bail Spring Guide A
301.	Bushing
303.	"C" Lock
306.	Clutch Spring
309.	Clutch Pawl Spring
311.	Lock Washer Retainer
312.	Handle Lock Washer
313.	Handle Screw Cap
314.	Dial Click
316.	Baitrunner Pawl Spring
318.	Dial Retainer
322.	Slider Retainer Screw
323.	Clutch Cam
325.	Clutch Arm
326.	Lever Shaft Retainer
328.	Baitrunner Click Spring
331.	Free Spool Tension Washer
332.	Click Gear
333.	Eared Washer "BFS"

#### PART # DESCRIPTION

PART #	DESCRIPTION
334.	Free Spool Tension Spring
335.	Free Spool Tension Screw
336.	Dial Spacer
337.	Baitrunner Tension Dial
351.	Oscillating Gear
354.	Drag Knob
355.	Spool Assembly
356.	Main Shaft
357.	Rotor
358.	Bail Trip Lever
359.	Bail Trip Cover
360.	Ball Assembly
361.	Anti-Reverse Ratchet
362.	Pinion Gear
363.	Anti-Reverse Pawl Screw
364.	Body
365.	Drive Gear
366.	Baitrunner Ratchet
367.	Ratchet Spacer
368.	Baitrunner Pawl Guide
369.	Side Cover
370.	Baitrunner Pawl
371.	Oscillating Slider
372.	Clutch Cam Spacer
373.	Clutch Plate Assembly
374.	Baitrunner Lever Arm (L)
375.	Free Spool Tension Shaft
376.	Baitrunner Lever Arm (R)
377.	Baitrunner Lever Bridge
378.	Handle Assembly