

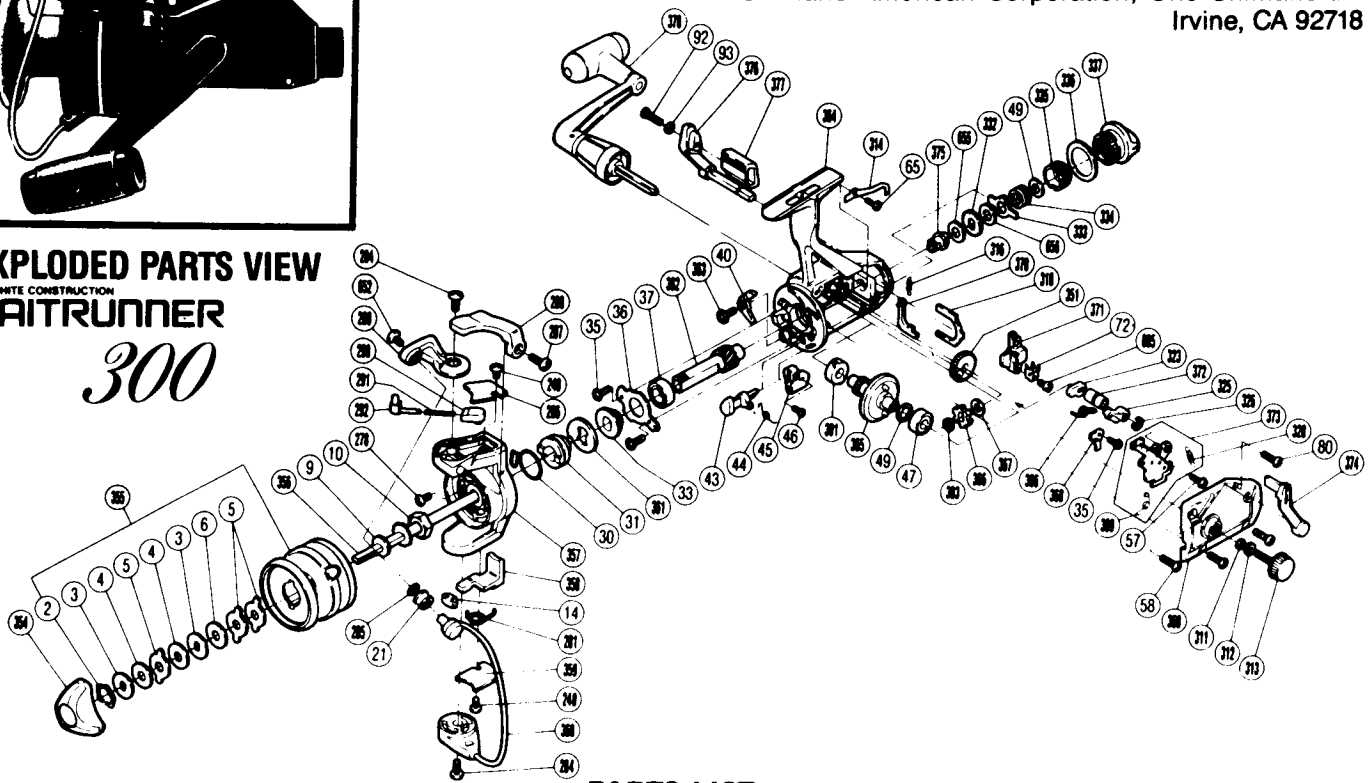
SHIMANO®

1989 REPAIR MANUAL

Shimano American Corporation, One Shimano Dr.
Irvine, CA 92718

EXPLODED PARTS VIEW GRAPHITE CONSTRUCTION BAITRUNNER

300



PARTS LIST

PART #	DESCRIPTION	PART #	DESCRIPTION	PART #	DESCRIPTION
BR 0002	Drag Washers Retainer	BR 0281	Lever Spring	BR 0351	Oscillating Gear
BR 0003	Key Washer	BR 0284	Bail Trip Cam Screw	BR 0354	Drag Knob
BR 0004	Drag Washer 1	BR 0285	Line Roller Washer	BR 0355	Spool Assembly
BR 0005	Eared Washer	BR 0286	Bail Spring Cover	BR 0356	Main Shaft
BR 0006	Drag Washer 2	BR 0287	Trigger Screw	BR 0357	Rotor
BR 0009	Spool Washer	BR 0288	Quick-Fire II Trigger	BR 0358	Bail Trip Lever
BR 0010	Rotor Nut	BR 0289	Bail Arm	BR 0359	Bail Trip Cover
BR 0014	Bail Trip Slide Cam	BR 0290	Bail Spring Guide B	BR 0360	Bail Assembly
BR 0021	Line Roller	BR 0291	Bail Spring	BR 0361	Anti-Reverse Ratchet
BR 0030	Anti-Reverse Pawl Spring	BR 0292	Bail Spring Guide A	BR 0362	Pinion Gear
BR 0031	Anti-Reverse Spring Holder	BR 0301	Bushing	BR 0363	Anti-Reverse Pawl Screw
BR 0033	Pinion Spacer	BR 0303	"C" Lock	BR 0364	Body
BR 0035	Bearing Retainer Screw	BR 0306	Clutch Spring	BR 0365	Drive Gear
BR 0036	Bearing Retainer	BR 0309	Clutch Pawl Spring	BR 0366	Baitrunner Ratchet
BR 0037	Ball Bearing	BR 0311	Lock Washer Retainer	BR 0367	Ratchet Spacer
BR 0040	Anti-Reverse Pawl	BR 0312	Handle Lock Washer	BR 0368	Baitrunner Pawl Guide
BR 0043	Anti-Reverse Cam	BR 0313	Handle Screw Cap	BR 0369	Side Cover
BR 0044	Anti-Reverse Cam Spring	BR 0314	Dial Click	BR 0370	Baitrunner Pawl
BR 0045	Anti-Reverse Lever	BR 0316	Baitrunner Pawl Spring	BR 0371	Oscillating Slider
BR 0046	Anti-Reverse Lever Screw	BR 0318	Dial Retainer	BR 0372	Clutch Cam Spacer
BR 0047	Ball Bearing	BR 0323	Clutch Cam	BR 0373	Clutch Plate Assembly
BR 0049	Drive Gear Washer	BR 0325	Clutch Arm	BR 0374	Baitrunner Lever Arm (L)
BR 0057	Clutch Plate Screw	BR 0326	Lever Shaft Retainer	BR 0375	Free Spool Tension Shaft
BR 0058	Side Cover Screw A	BR 0328	Baitrunner Click Spring	BR 0376	Baitrunner Lever Arm (R)
BR 0065	Dial Click Screw	BR 0332	Click Gear	BR 0377	Baitrunner Lever Bridge
BR 0072	Oscillating Slider Retainer	BR 0333	Eared Washer "BFS"	BR 0378	Handle Assembly
BR 0080	Side Cover Screw B	BR 0334	Free Spool Tension Spring	BR 0652	Line Roller Screw
BR 0092	Baitrunner Lever Screw	BR 0335	Free Spool Tension Screw	BR 0655	Free Spool Tension Washer (A)
BR 0093	Lock Washer	BR 0336	Dial Spacer	BR 0656	Free Spool Tension Washer (B)
BR 0240	Bail Trip Cover Screw	BR 0337	Baitrunner Tension Dial	BR 0685	Slider Retainer Screw
BR 0278	Nut Lock Screw				