

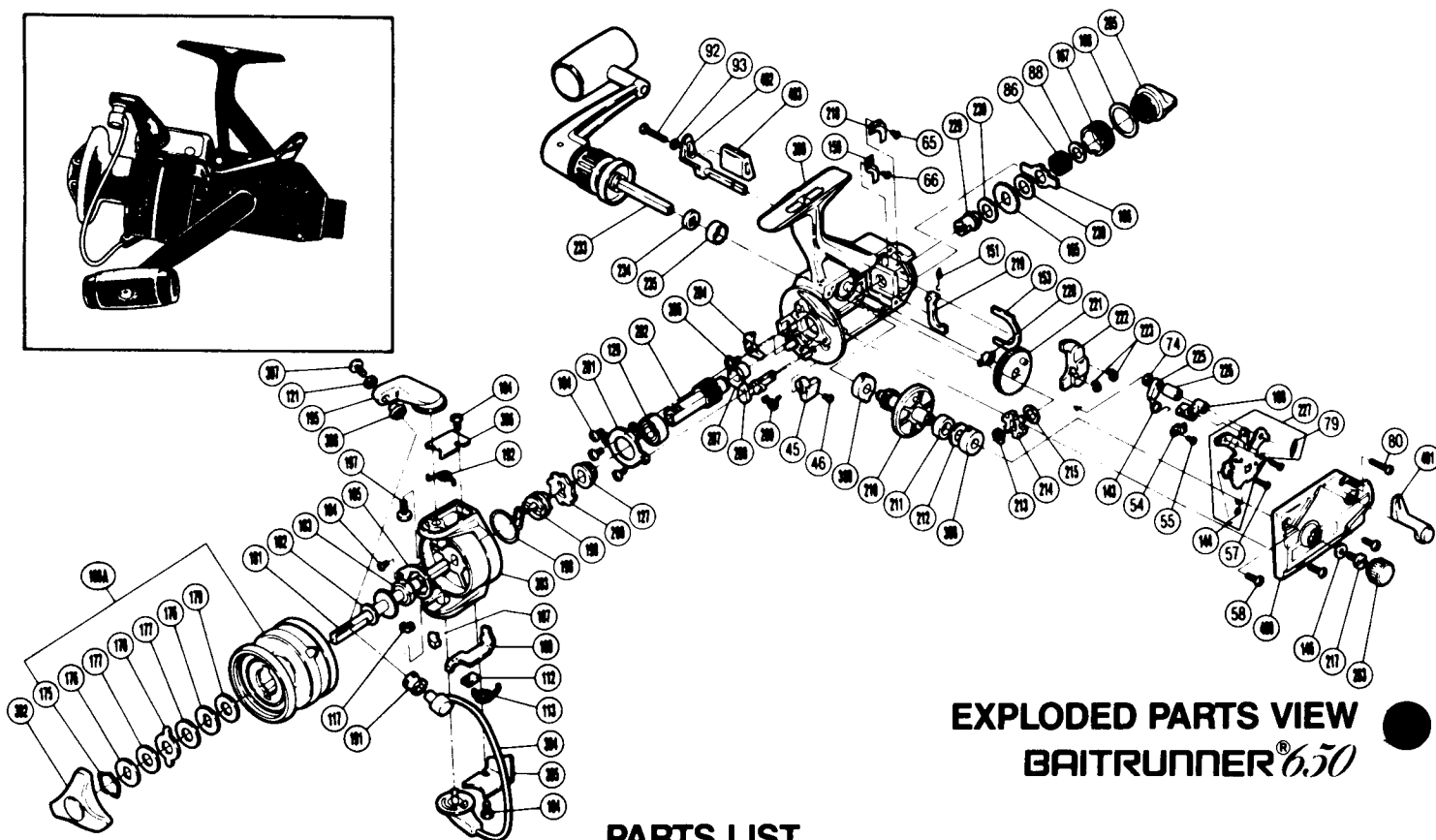
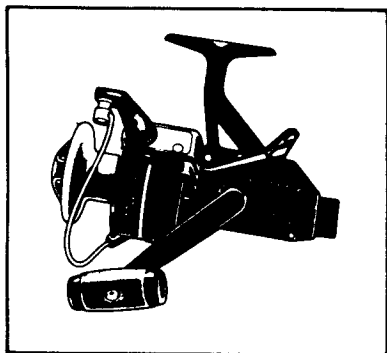
# SHIMANO®

## 1987 REPAIR MANUAL

Shimano American Corporation, One Shimano Dr.  
Irvine, CA 92718

### TO ORDER:

This reel belongs to the "BaitRunner" series.  
Please order parts using the abbreviation  
"BR" and the part number.



### EXPLODED PARTS VIEW BAITRUNNER® 650

### PARTS LIST

#### PART # DESCRIPTION

- 45. Anti-Reverse Lever
- 46. Anti-Reverse Lever Screw
- 54. Lever Shaft Retainer
- 55. Shaft Retainer Screw
- 57. Clutch Plate Screw
- 58. Side Cover Screw A
- 65. Dial Click Screw
- 66. Pawl Guide Screw
- 74. Clutch Cam Spacer B
- 79. Baitrunner Click Spring
- 80. Side Cover Screw B
- 86. Free Spool Tension Spring
- 88. Tension Spring Washer "B"
- 92. Baitrunner Lever Screw
- 93. Lock Washer
- 112. Trip Lever Guide
- 113. Lever Spring
- 117. "E" Lock
- 121. Lock Washer
- 127. Pinion Spacer
- 129. Ball Bearing
- 143. Clutch Spring
- 144. Clutch Pawl Spring
- 146. Handle Lock Washer
- 150. Baitrunner Pawl Guide
- 151. Baitrunner Pawl Spring
- 153. Dial Retainer
- 160. Clutch Arm
- 165. Click Gear
- 166. Eared Washer "BFS"
- 167. Free Spool Tension Screw
- 168. Dial Spacer

#### PART # DESCRIPTION

- 175. Drag Washers Retainer
- 176. Key Washer
- 177. Drag Washer 1
- 178. Eared Washer
- 179. Drag Washer 2
- 180A. Spool Assembly (Universal)
- 181. Main Shaft
- 182. Spool Washer
- 183. Rotor Nut
- 184. Multi Purpose Screw
- 185. Rotor Nut Lock Plate
- 187. Bail Trip Slide Cam
- 188. Bail Trip Lever
- 191. Line Roller
- 192. Bail Spring
- 195. Bail Arm
- 197. Bail Arm Screw
- 198. Anti-Reverse Pawl Spring
- 199. Anti-Reverse Spring Holder
- 200. Anti-Reverse Ratchet
- 201. Bearing Retainer
- 202. Pinion Gear
- 204. Anti-Reverse Pawl
- 207. Pinion Gear Bushing
- 208. Anti-Reverse Cam
- 209. Anti-Reverse Cam Spring
- 210. Drive Gear
- 211. Drive Gear Spacer
- 212. Drive Gear Washer
- 213. "C" Lock
- 214. Baitrunner Ratchet
- 215. Ratchet Spacer

#### PART # DESCRIPTION

- 217. Handle Lock Screw
- 218. Dial Click
- 219. Baitrunner Pawl
- 220. Oscillating Gear Bushing
- 221. Oscillating Gear
- 222. Oscillating Slider
- 223. "C" Lock
- 225. Clutch Cam
- 226. Clutch Cam Spacer A
- 227. Clutch Plate Assembly
- 229. Free Spool Tension Shaft
- 230. Free Spool Tension Washer
- 233. Handle Assembly
- 234. Handle Lock Spacer
- 235. Handle Lock Ring
- 263. Handle Screw Cap
- 265. Baitrunner Tension Dial
- 386. Anti-Reverse Pawl Screw
- 388. Bushing
- 392. Drag Knob
- 393. Rotor
- 394. Bail Assembly
- 395. Bail Trip Cover
- 396. Bail Spring Cover
- 397. Line Roller Screw
- 398. Line Roller Washer
- 399. Body
- 400. Side Cover
- 401. Baitrunner Lever Arm (L)
- 402. Baitrunner Lever Arm (R)
- 403. Baitrunner Lever Bridge