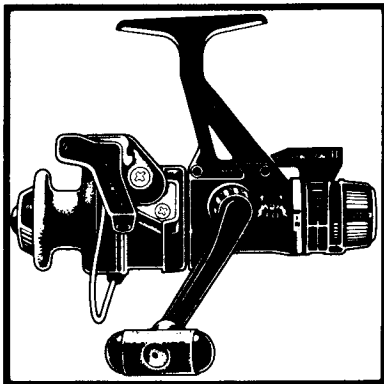
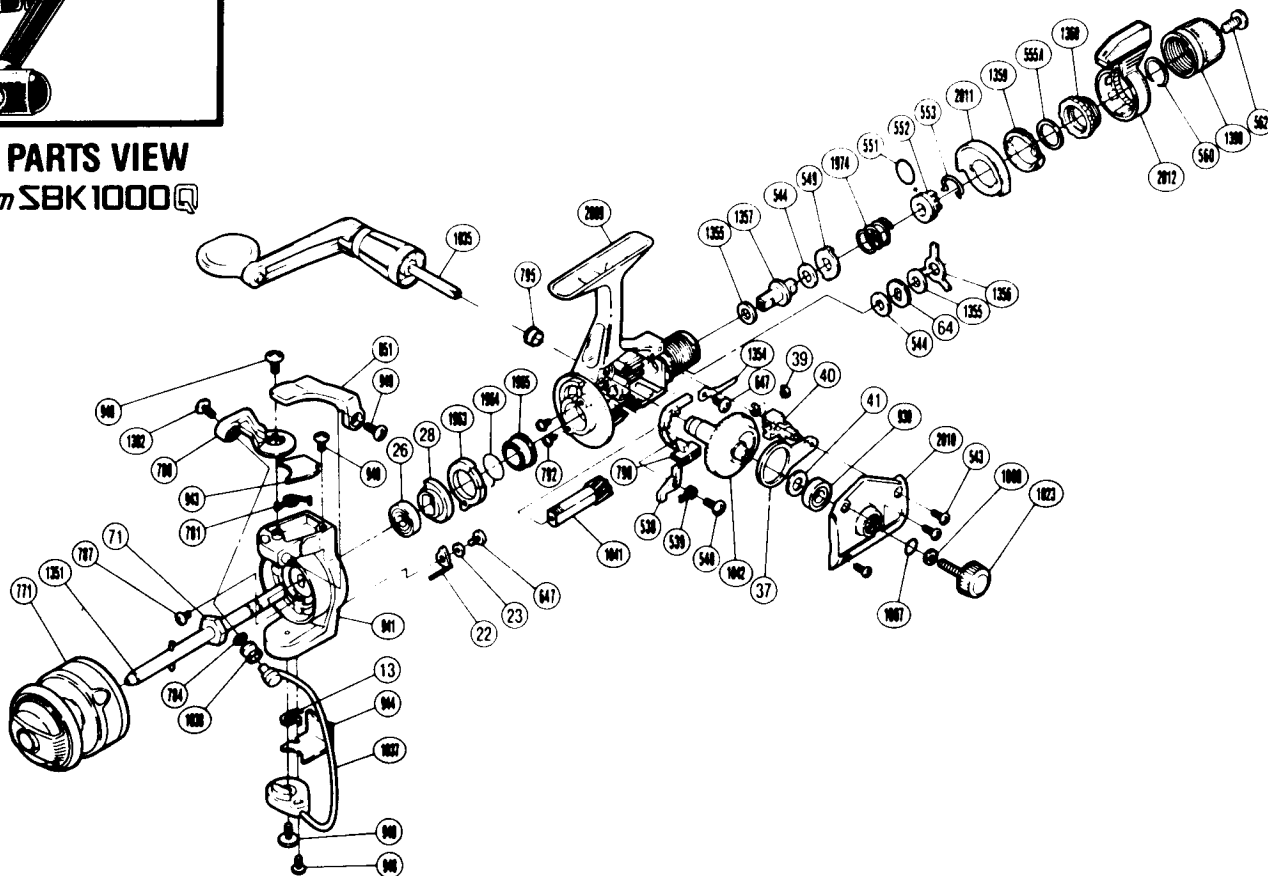


**1989 REPAIR MANUAL**Shimano American Corporation, One Shimano Dr.  
Irvine, CA 92718**EXPLODED PARTS VIEW***Black Magnum SBK 1000 Q***PARTS LIST****PART # DESCRIPTION**

RD 0013	(Trip) Lever Spring
RD 0022	(Bail) Trip Lever
RD 0023	Trip Lever Spacer
RD 0026	Ball Bearing
RD 0028	Anti-Reverse Ratchet
RD 0037	Oscillating Arm
RD 0039	"C" Lock
RD 0040	Oscillating Block
RD 0041	Drive Gear Washer
RD 0064	Click Gear
RD 0071	Rotor Nut
RD 0538	Anti-Reverse Pawl
RD 0539	Anti-Reverse Pawl Spring
RD 0540	Anti-Reverse Pawl Screw
RD 0543	Side Cover Screw (B)
RD 0544	Drag Washer "C2" (White)
RD 0549	Eared Washer "B"
RD 0551	"O" Ring
RD 0552	Pressure Screw
RD 0553	Hold Click Spring
RD 0555A	Fightin' Pressure Screw Washer

**PART # DESCRIPTION**

RD 0560	Lever Hold Spring
RD 0562	Drag Programmer Screw
RD 0647	Nut Lock Screw
RD 0771	Spool Assembly
RD 0780	Bail Arm
RD 0781	Bail Spring
RD 0784	Line Roller Washer
RD 0787	Nut Lock Screw
RD 0790	Anti-Reverse Switch (Black)
RD 0792	Bearing Retainer Screw
RD 0795	Bushing B
RD 0851	Quick-Fire II Trigger
RD 0930	Ball Bearing
RD 0940	Bail Trip Cam Screw
RD 0941	Rotor
RD 0943	Bail Spring Cover
RD 0944	Bail Trip Cover
RD 0948	Bail Trip Cover Screw
RD 0949	Trigger Screw
RD 1007	Lock Washer Retainer
RD 1008	Handle Lock Washer
RD 1023	Handle Screw Cap

**PART # DESCRIPTION**

RD 1035	Handle Assembly
RD 1037	Bail Assembly
RD 1038	Sic Ceramic Roller
RD 1041	Pinion Gear
RD 1042	Drive Gear
RD 1302	Line Roller Screw
RD 1351	Main Shaft
RD 1354	Drag Click
RD 1355	Drag Washer "C1"
RD 1356	Eared Washer "BF"
RD 1357	Drag Shaft
RD 1359	Lever Click Gear
RD 1360	Fightin' Pressure Screw
RD 1398	Drag Programmer
RD 1963	Anti-Reverse Lock Out
RD 1964	Anti-Reverse Lock Out Spring
RD 1965	Pinion Spacer
RD 1974	Drag Coil Spring
RD 2009	Body
RD 2010	Side Cover
RD 2011	Lever Quadrant
RD 2012	Fightin' Drag II Lever