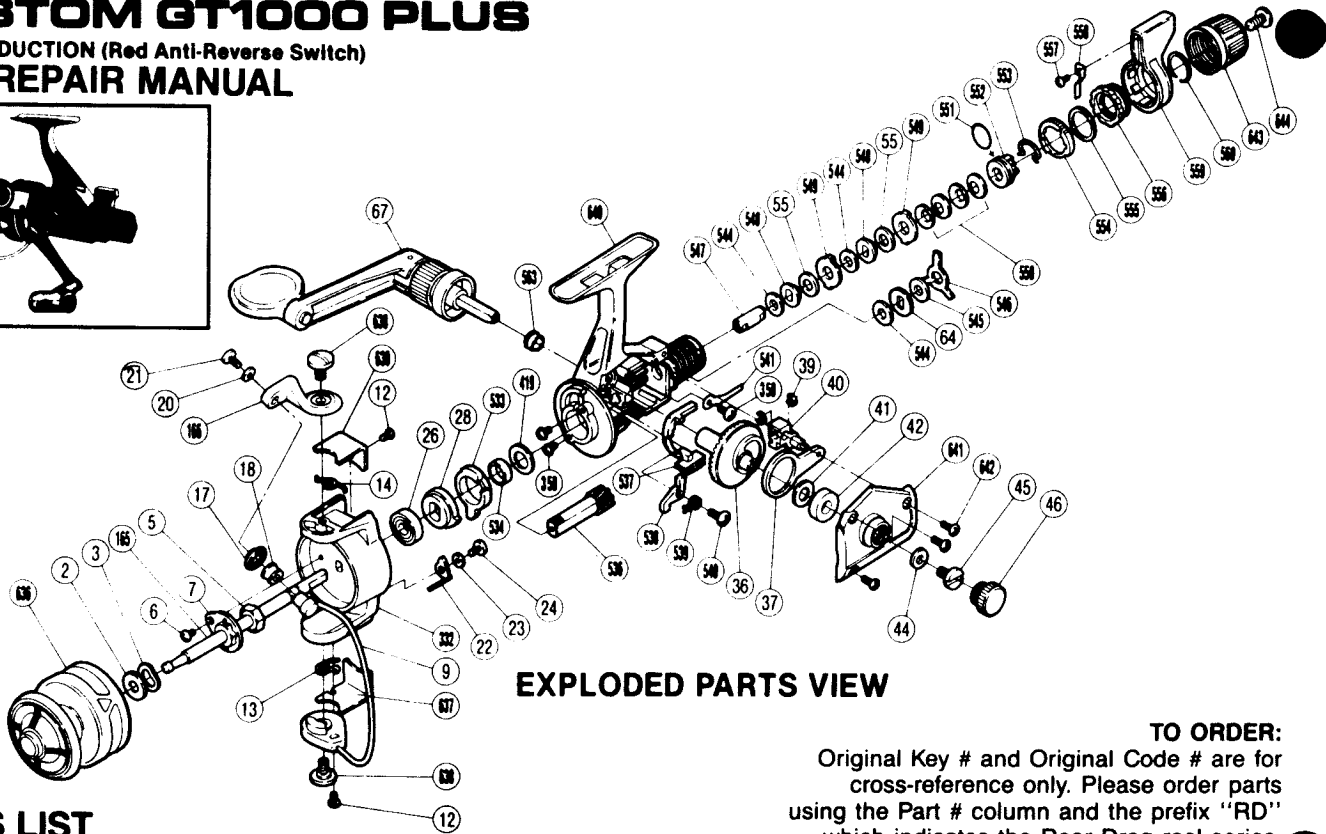
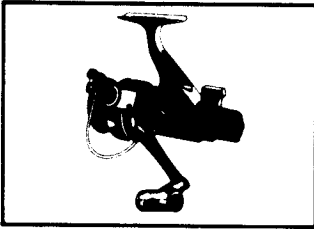


SHIMANO®

CUSTOM GT1000 PLUS

1985 PRODUCTION (Red Anti-Reverse Switch)

1987 REPAIR MANUAL



EXPLODED PARTS VIEW

PARTS LIST

TO ORDER:
Original Key # and Original Code # are for cross-reference only. Please order parts using the Part # column and the prefix "RD" which indicates the Rear Drag reel series.

| PART # | ORIGINAL KEY # | ORIGINAL CODE # | DESCRIPTION | PART # | ORIGINAL KEY # | ORIGINAL CODE # | DESCRIPTION |
|--------|----------------|-----------------|--------------------------|--------|----------------|-----------------|--------------------------------|
| 636. | 1. | 6-0209 31110S | Spool Assembly | 37. | 37. | 7-0410 26100S | Oscillating Arm |
| 2. | 2. | 7-0217 26100S | Spool Washer | 44. | 38. | 7-0725 05500S | Handle Lock Washer |
| 3. | 3. | 7-2101 06100S | Tension Spring | 541. | 39. | 7-0122 32100S | Drag Click |
| 6. | 4. | 7-0013 30410S | Nut Lock Screw | 358. | 40. | 7-0014 30220S | Drag Click Screw |
| 165. | 5. | 6-0219 27101S | Main Shaft Assembly | 39. | 41. | 7-0525 26100S | "C" Lock |
| 7. | 6. | 7-0360 21000S | Rotor Nut Lock Plate | 40. | 42. | 7-0472 26100S | Oscillating Block |
| 5. | 7. | 7-0311 26100S | Rotor Nut | 41. | 43. | 7-0446 01100S | Drive Gear Washer |
| 17. | 8. | 7-0423 21000S | Line Roller Washer | 42. | 44. | 7-0617 26100S | Drive Gear Bushing A |
| 18. | 9. | 7-0304 21100S | Line Roller | 641. | 45. | 6-0609 33100S | Side Cover |
| 332. | 10. | 7-0301 29120S | Rotor | 642. | 46. | 7-0011 30711S | Side Cover Screw |
| 9. | 11. | 6-0309 26100S | Bail | 45. | 47. | 7-0710 05100S | Handle Lock Screw |
| 637. | 12. | 7-0338 33100S | Bail Trip Cover | 46. | 48. | 7-0453 26100S | Handle Screw Cap |
| 638. | 13. | 7-0306 26110S | Bail Trip Cam Screw | 544. | 49. | 7-0139 26110S | Drag Washer "C ₂ " |
| 12. | 14. | 7-0013 30110S | Cover Screw | 64. | 50. | 7-0113 26100S | Click Gear |
| 13. | 15. | 7-0337 19300S | Lever Spring | 545. | 51. | 7-0139 26101S | Drag Washer "C ₁ " |
| 14. | 16. | 7-0310 24500S | Bail Spring | 546. | 52. | 7-0159 32100S | Eared Washer "BF" |
| 639. | 17. | 7-0307 33100S | Bail Spring Cover | 547. | 53. | 7-0112 32100S | Drag Shaft |
| 21. | 18. | 7-0013 30091S | Line Roller Screw | 548. | 54. | 7-0115 32100S | Key Washer "A" |
| 20. | 19. | 7-0316 21100S | Lock Washer | 55. | 55. | 7-0139 26100S | Drag Washer "C ₁ " |
| 166. | 20. | 7-0303 24500S | Bail Arm | 549. | 56. | 7-0116 32100S | Eared Washer "B" |
| 22. | 21. | 7-0336 24500S | Bail Trip Lever | 550. | 57. | 7-0145 32100S | Coned Disc Springs |
| 23. | 22. | 7-0354 19300S | Trip Lever Spacer | 551. | 58. | 7-0160 32100S | "O" Ring |
| 24. | 23. | 7-0014 30210S | Trip Lever Screw | 552. | 59. | 7-0110 32100S | Pressure Screw |
| 26. | 24. | 7-0402 19300S | Ball Bearing | 553. | 60. | 7-0149 32100S | Hold Click Spring |
| 28. | 25. | 7-0421 21000S | Anti-Reverse Ratchet | 554. | 61. | 7-0155 32100S | Lever Click Gear |
| 533. | 26. | 7-0522 32100S | Anti-Reverse Lock Out | 555. | 62. | 7-0157 32100S | Fightin' Pressure Screw Washer |
| 534. | 27. | 7-0428 32100S | Pinion Spacer | 556. | 63. | 7-0156 32100S | Fightin' Pressure Screw |
| 419. | 28. | 7-0514 28110S | Bushing Washer | 557. | 64. | 7-0010 00110S | Fightin' Drag Click Screw |
| 358. | 29. | 7-0011 30470S | Bearing Retainer Screw | 558. | 65. | 7-0154 32100S | Fightin' Drag Click |
| 640. | 30. | 6-0409 33100S | Body | 559. | 66. | 6-0441 32100S | Fightin' Drag Lever |
| 536. | 31. | 7-0407 32100S | Pinion Gear | 560. | 67. | 7-0158 32100S | Lever Hold Spring |
| 537. | 32. | 7-0404 32100S | Anti-Reverse Switch | 643. | 68. | 6-0439 30100S | Drag Programmer |
| 538. | 33. | 7-0427 32100S | Anti-Reverse Pawl | 644. | 69. | 7-0013 40630S | Drag Programmer Screw |
| 539. | 34. | 7-0422 24500S | Anti-Reverse Pawl Spring | 67. | 70. | 6-0709 27100S | Handle Assembly |
| 540. | 35. | 7-0013 30140S | Anti-Reverse Pawl Screw | 563. | 71. | 7-0430 29050S | Drive Gear Bushing B |
| 36. | 36. | 7-0408 26100S | Drive Gear | | | | |

Shimano American Corporation
One Shimano Dr., Irvine, CA 92718

Prices and specifications subject to change without notice

JUNE 1986