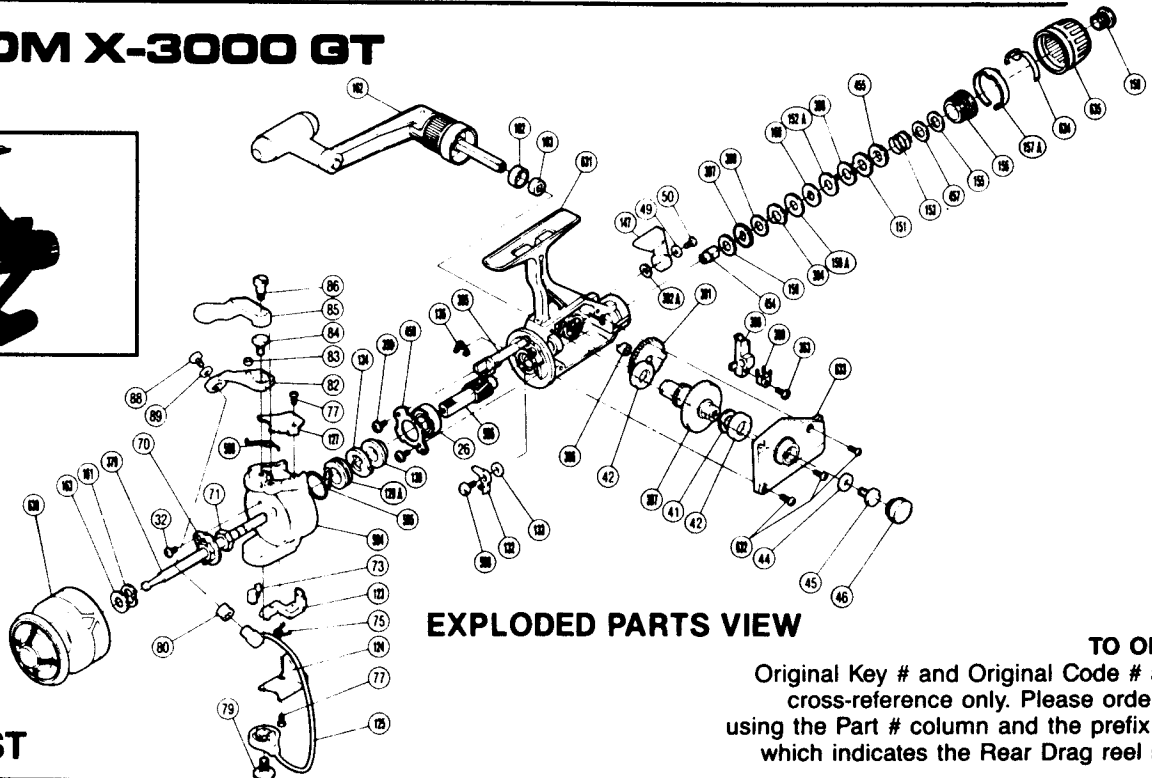
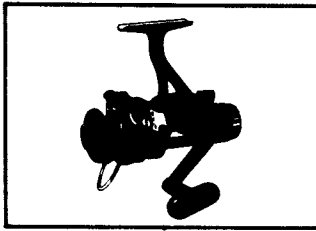


CUSTOM X-3000 GT



EXPLODED PARTS VIEW

TO ORDER:

Original Key # and Original Code # are for cross-reference only. Please order parts using the Part # column and the prefix "RD" which indicates the Rear Drag reel series.

PARTS LIST

PART #	ORIGINAL KEY #	ORIGINAL CODE #	DESCRIPTION	PART #	ORIGINAL KEY #	ORIGINAL CODE #	DESCRIPTION
630.	1.	6-0209 31203S	Spool Assembly	42.	41.	7-0617 26100S	Drive Gear Bushing
163.	2.	7-0217 26300S	Spool Washer	387.	42.	7-0408 27200S	Drive Gear
161.	3.	7-2101 09100S	Tension Spring	41.	43.	7-0446 01100S	Drive Gear Washer
379.	4.	6-0219 27330S	Main Shaft Assembly	632.	44.	7-0011 40302S	Side Cover Screw
32.	5.	7-0014 30100S	Nut Lock Screw	44.	45.	7-0725 05500S	Handle Lock Washer
70.	6.	7-0360 26200S	Rotor Nut Lock Plate	45.	46.	7-0710 05100S	Handle Lock Screw
71.	7.	7-0311 01100S	Rotor Nut	46.	47.	7-0453 26100S	Handle Screw Cap
594.	8.	7-0301 29321S	Rotor	391.	48.	6-0449 27330S	Oscillating Gear Assembly
73.	9.	7-0355 21200S	Bail Trip Slide Cam	390.	49.	7-0410 29320S	Oscillating Slider
123.	10.	7-0336 21300S	Bail Trip Lever	389.	50.	7-0538 29300S	Oscillating Slider Retainer
75.	11.	7-0337 21200S	Lever Spring	363.	51.	7-0014 30120S	Slider Retainer Screw
124.	12.	7-0338 21800S	Bail Trip Cover	633.	52.	6-0609 31300S	Side Cover Assembly
77.	13.	7-0013 30100S	Cover Screw	392A.	53.		Anti-Reverse Lever Washer
125.	14.	6-0309 26300S	Bail	147.	54.	7-0404 26300S	Anti-Reverse Lever
79.	15.	7-0335 14000S	Bail Trip Cam Screw	49.	55.	7-0023 15300S	Lock Washer
80.	16.	7-0304 01100S	Line Roller	50.	56.	7-0013 00100S	Anti-Reverse Lever Screw
127.	17.	7-0307 21800S	Bail Spring Cover	454.	57.	7-0112 26300S	Drag Shaft
82.	18.	7-0303 21700S	Bail Arm	150.	58.	7-0139 26300S	Drag Washer "C"
83.	19.	7-0356 21700S	Trigger Pin Roller	397.	59.	7-0113 29300S	Click Gear
84.	20.	7-0306 21700S	Bail Arm Screw	398.	60.	7-0144 29300S	Drag Washer "E"
85.	21.	7-0357 21700S	Quick-Fire Trigger	394.	61.	7-0147 29300S	Eared Washer "G"
86.	22.	7-0358 21700S	Trigger Screw	160.	62.	7-0115 26300S	Key Washer "A"
88.	23.	7-0013 40410S	Line Roller Screw	152A.	63.	7-0140 26310S	Drag Washer "D"
89.	24.	7-0316 01100S	Lock Washer	399.	64.	7-0116 29300S	Eared Washer "B ₁ "
568.	25.	7-0310 19301S	Bail Spring	153.	65.	7-0119 26300S	Drag Coil Spring
595.	26.	7-0422 21800S	Anti-Reverse Pawl Spring	457.	66.	7-0135 26300S	Drag Spring Washer "A"
129A.	27.	7-0498 29320S	Anti-Reverse Spring Holder	155.	67.	7-0136 26300S	Drag Spring Washer "B"
134.	28.	7-0421 21800S	Anti-Reverse Ratchet	156.	68.	7-0110 26300S	Pressure Screw
130.	29.	7-0428 21300S	Pinion Spacer	157A.	69.	7-0143 26300S	Stop Ring
358.	30.	7-0011 30470S	Bearing Retainer Screw	634.	70.	7-0138 26301S	Drag Knob Click Spring
459.	31.	7-0403 29730S	Bearing Retainer	635.	71.	6-0109 26301S	Drag Knob
26.	32.	7-0402 19300S	Ball Bearing	158.	72.	7-0134 26300S	Drag Knob Screw
596.	33.	7-0407 29320S	Pinion Gear	162.	73.	6-0709 27330S	Handle Assembly
136.	34.	7-0426 21300S	Anti-Reverse Cam Spring	102.	74.	7-0731 26200S	Handle Lock Ring
385.	35.	7-0424 29320S	Anti-Reverse Cam	103.	75.	7-0743 26200S	Handle Lock Spacer
598.	36.	7-0425 29300S	Anti-Reverse Pawl Screw	455.	76.	7-0152 26300S	Drag Spring Washer "C"
132.	37.	6-0419 21800S	Anti-Reverse Pawl Assembly	150A.	77.	7-0139 26310S	Drag Washer "C ₂ "
133.	38.	7-0457 05800S	Anti-Reverse Pawl Spacer	151.	78.	7-0116 26300S	Eared Washer "B ₁ "
631.	39.	6-0409 31300S	Body				
386.	40.	7-0537 29300S	Oscillating Gear Bushing				