

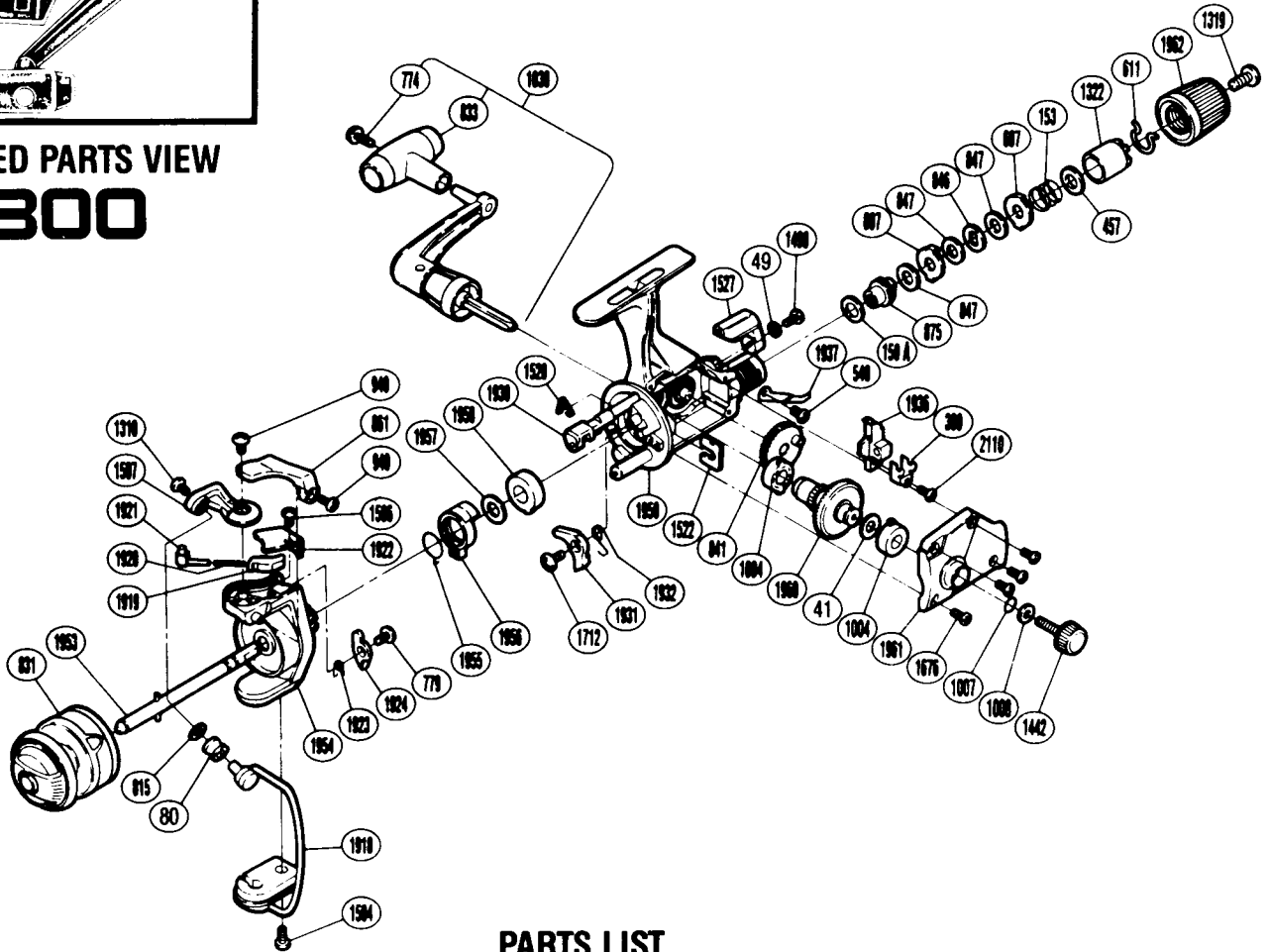
SHIMANO®

1989 REPAIR MANUAL

Shimano American Corporation, One Shimano Dr.
Irvine, CA 92718

EXPLODED PARTS VIEW

FX300



PARTS LIST

PART # DESCRIPTION

RD 0041	Drive Gear Washer
RD 0049	Lock Washer
RD 0080	Line Roller
RD 0150A	Drag Washer "C2" (White)
RD 0153	Drag (Coil) Spring
RD 0389	Oscillating Slider Retainer
RD 0457	Drag Spring Washer "A"
RD 0540	Anti-Reverse Pawl Screw
RD 0607	Eared Washer "B"
RD 0611	Hold Click Spring
RD 0774	Handle Knob Screw
RD 0779	Bail Trip Cam Screw
RD 0815	Line Roller Washer
RD 0831	Spool Assembly (Universal)
RD 0833	Handle Knob
RD 0841	Oscillating Gear
RD 0846	Key Washer "A"
RD 0847	Drag Washer "H1"
RD 0861	Quick-Fire II Trigger
RD 0875	Drag Shift
RD 0940	Bail Trip Cam Screw

PART # DESCRIPTION

RD 0949	Trigger Screw
RD 1004	Bushing A
RD 1007	Lock Washer Retainer
RD 1008	Handle Lock Washer
RD 1030	Handle Assembly
RD 1310	Line Roller Screw
RD 1319	Drag Knob Screw
RD 1322	Pressure Screw
RD 1442	Handle Screw Cap
RD 1490	Anti-Reverse Lever Screw
RD 1504	Bail Hold Cover Screw
RD 1506	Bail Spring Cover Screw
RD 1507	Bail Arm
RD 1520	Anti-Reverse Cam Spring
RD 1522	Rotor Lock
RD 1527	Anti-Reverse Lever
RD 1676	Side Cover Screw
RD 1712	Anti-Reverse Pawl Screw
RD 1918	Bail Assembly
RD 1919	Bail Spring Guide B
RD 1920	Bail Spring

PART # DESCRIPTION

RD 1921	Bail Spring Guide A
RD 1922	Bail Spring Cover
RD 1923	Lever Spring
RD 1924	Bail Trip Lever
RD 1930	Anti-Reverse Cam
RD 1931	Anti-Reverse Pawl
RD 1932	Anti-Reverse Pawl Spring
RD 1936	Oscillating Slider
RD 1937	Drag Click
RD 1953	Main Shaft
RD 1954	Rotor
RD 1955	Anti-Reverse Lock Out Spring
RD 1956	Anti-Reverse Lock Out
RD 1957	Bushing Washer
RD 1958	Bushing
RD 1959	Body
RD 1960	Drive Gear
RD 1961	Side Cover
RD 1962	Drag Knob
RD 2110	Slider Retainer Screw