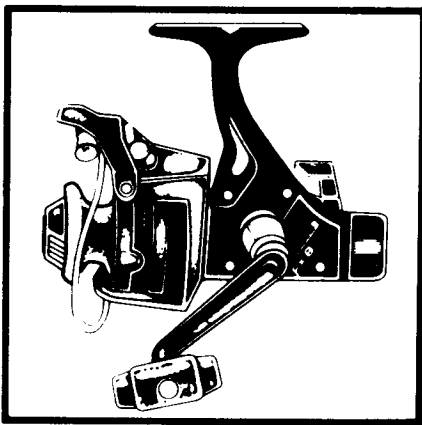


# SHIMANO®

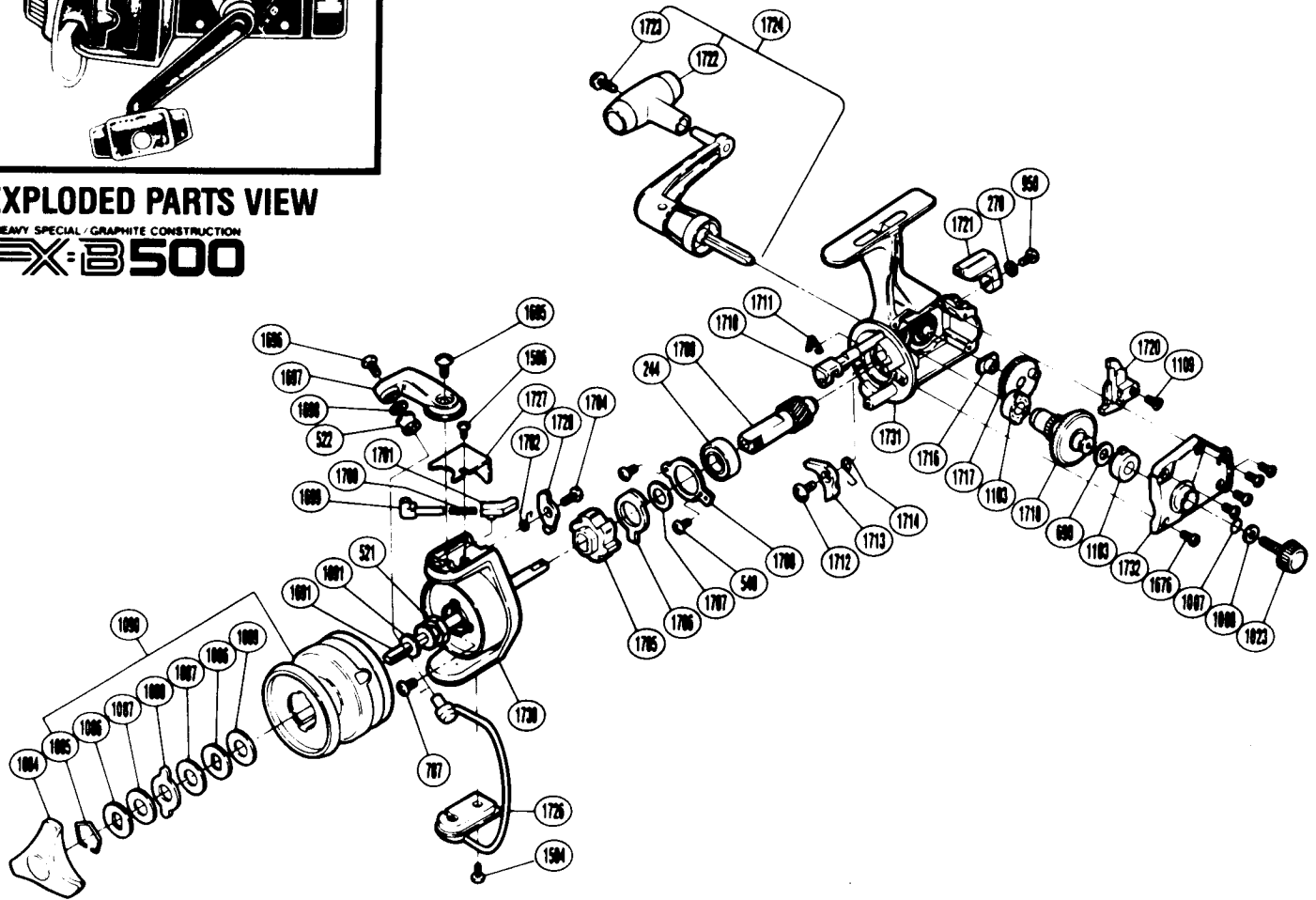
## 1988 REPAIR MANUAL

Shimano American Corporation, One Shimano Dr.  
Irvine, CA 92718



### EXPLODED PARTS VIEW

HEAVY SPECIAL GRAPHITE CONSTRUCTION  
**FX-3500**



### PARTS LIST

PART #	DESCRIPTION
RD 0244	Ball Bearing
RD 0270	(Lever Screw) Lock Washer
RD 0521	Rotor Nut
RD 0522	Line Roller
RD 0540	Anti-Reverse Pawl Screw
RD 0690	Drive Gear Washer
RD 0787	Nut Lock Screw
RD 0950	Line Roller Screw
RD 1007	Lock Washer Retainer
RD 1008	Handle Lock Washer
RD 1023	Handle Screw Cap
RD 1084	Drag Knob
RD 1085	Drag Washers Retainer
RD 1086	Key Washer
RD 1087	Drag Washer 1
RD 1088	Eared Washer
RD 1089	Drag Washer 2
RD 1090	Spool Assembly
RD 1091	Spool Washer

PART #	DESCRIPTION
RD 1103	Bushing
RD 1109	Slider Retainer Screw
RD 1504	Bail Hold Cover Screw
RD 1506	Bail Spring Cover Screw
RD 1676	Side Cover Screw
RD 1691	Main Shaft
RD 1695	Bail Arm Screw
RD 1696	Line Roller Screw
RD 1697	Bail Arm
RD 1698	Line Roller Washer
RD 1700	Bail Spring
RD 1701	Bail Spring Guide B
RD 1702	Lever Spring
RD 1704	Bail Trip Lever Screw
RD 1705	Anti-Reverse Ratchet
RD 1706	Anti-Reverse Lock Out
RD 1707	Bushing Washer
RD 1708	Bearing Retainer
RD 1709	Pinion Gear

PART #	DESCRIPTION
RD 1710	Anti-Reverse Cam
RD 1711	Anti-Reverse Cam Spring
RD 1712	Anti-Reverse Pawl Screw
RD 1713	Anti-Reverse Pawl
RD 1714	Anti-Reverse Pawl Spring
RD 1716	Oscillating Gear Bushing
RD 1717	Oscillating Gear
RD 1718	Drive Gear
RD 1720	Oscillating Slider
RD 1721	Anti-Reverse Lever
RD 1722	Handle Knob
RD 1723	Handle Knob Screw
RD 1724	Handle Assembly
RD 1726	Bail Assembly
RD 1727	Bail Spring Cover
RD 1728	Bail Trip Lever
RD 1730	Rotor
RD 1731	Body
RD 1732	Side Cover