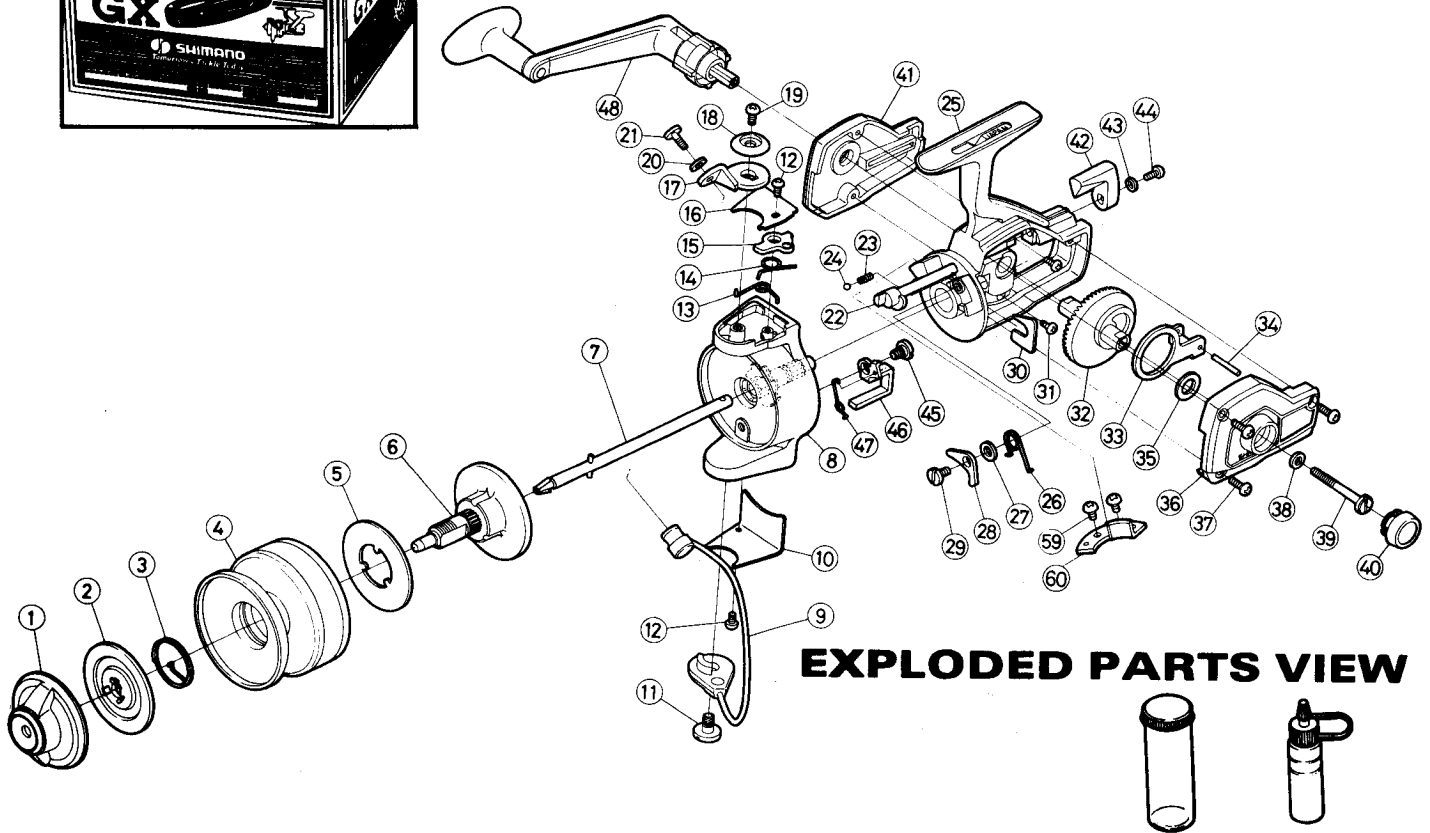
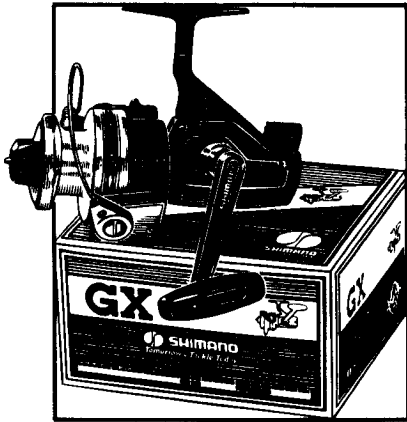




# SHIMANO

## REPAIR MANUAL NO. GX-100

Shimano American Corp., 205 Jefferson Road  
Parsippany, New Jersey 07054



### EXPLODED PARTS VIEW

### PARTS LIST

PART#	DESCRIPTION	PRICE	PART#	DESCRIPTION	PRICE	PART#	DESCRIPTION	PRICE
1	Drag Adjusting Knob	2.60	18	Bail Mount Cover	.30	34	Oscillation Guide Pin	.15
2	Drag Disk	.55	19	Bail Mount Screw	.30	35	Thrust Washer	.15
3	Click Spring	.25	20	Bail Screw Washer	.15	36	Left Side Plate	1.75
4	Spool Shell	11.30	21	Bail Wire Screw	.70	37	Left Side Plate Screw	.15
5	Base Drag Washer	.15	22	Anti Reverse Shaft	1.50	38	Handle Screw Washer	.15
6	Spindle	3.30	23	Shaft Detent Spring	.15	39	Handle Retainer Screw	1.50
7	Axle	2.30	24	Detent Ball	.15	40	Dust Cap	.30
8	Rotor	6.00	25	Housing	8.75	41	Right Side Plate	1.75
9	Bail Wire	3.45	26	Anti Reverse Dog Spring	.25	42	Anti Reverse Lever	.30
10	Trip Lever Cover	.55	27	Anti Reverse Dog Spacer	.15	43	Lever Screw Lock Washer	.15
11	Bail Wire Screw	.55	28	Anti Reverse Dog	.75	44	Anti Reverse Lever Screw	.15
12	Cover Screw	.15	29	Anti Reverse Dog Screw	.40	45	Trip Lever Screw	.25
13	Bail Spring	.20	30	Pinion Lock	.15	46	Trip Lever	1.60
14	Fold Latch Spring	.30	31	Right Sideplate Screw	.15	47	Trip Lever Spring	.25
15	Bail Fold Latch	.90	32	Drive Gear	1.50	48	Sa-Fold Handle	9.50
16	Bail Spring Cover	.35	33	Oscillation Guide	.75	59	Trip Cam Screw	.15
17	Bail Mount	1.25				60	Trip Cam	.95

Prices and specifications subject to change without notice.