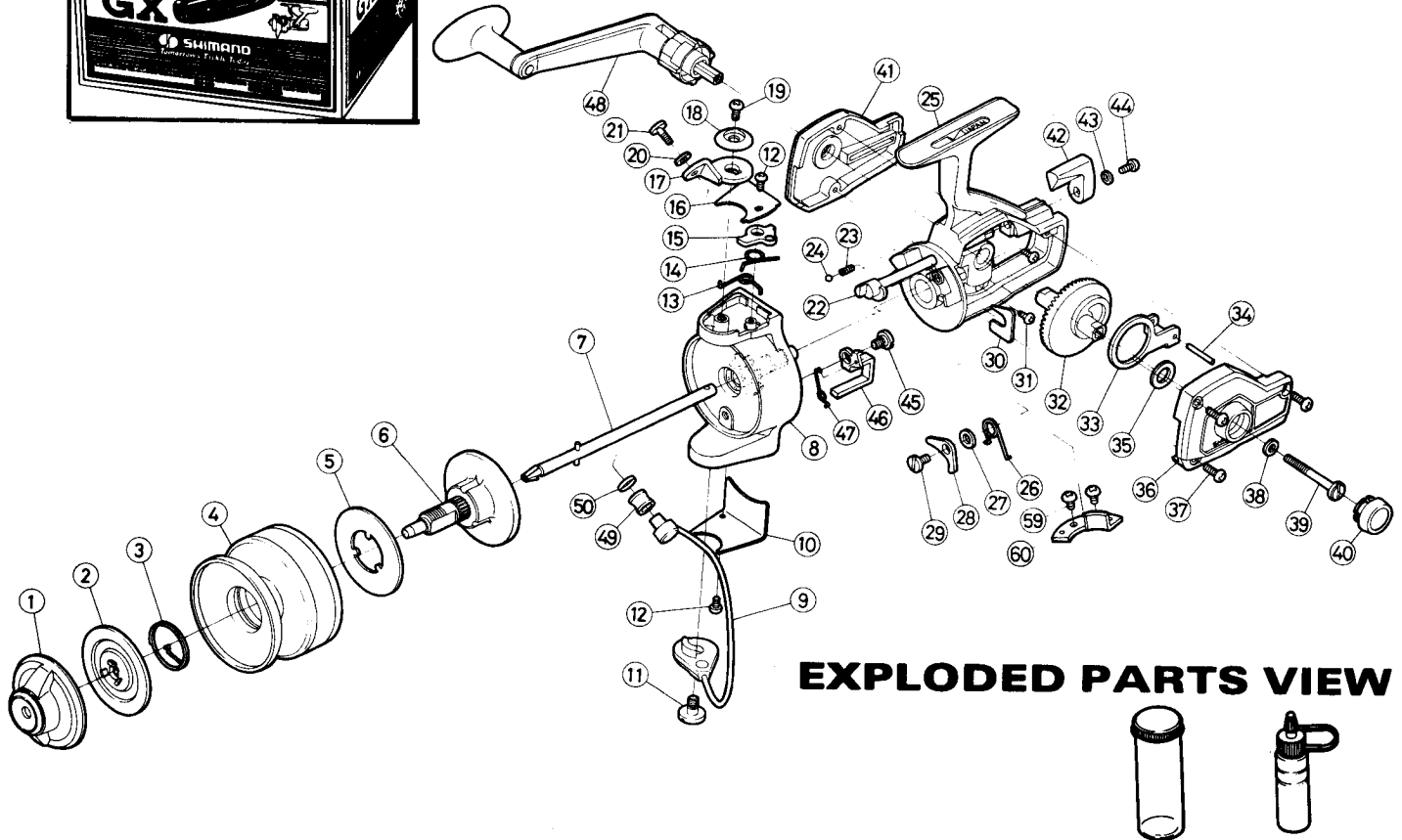
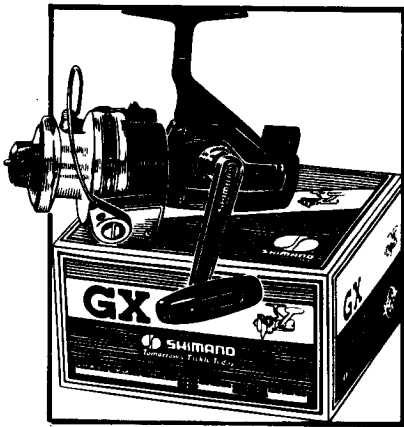


REPAIR MANUAL NO. GX-200

Shimano American Corp., 205 Jefferson Road
Parsippany, New Jersey 07054



EXPLODED PARTS VIEW

PARTS LIST

PART#	DESCRIPTION	PRICE	PART#	DESCRIPTION	PRICE	PART#	DESCRIPTION	PRICE
1	Drag Adjusting Knob	2.60	19	Bail Mount Screw	.30	35	Thrust Washer	.15
2	Drag Disk	.55	20	Bail Screw Washer	.15	36	Left Side Plate	1.75
3	Click Spring	.25	21	Bail Wire Screw	.70	37	Left Side Plate Screw	.15
4	Spool Shell	11.30	22	Anti Reverse Shaft	1.50	38	Handle Screw Washer	.15
5	Base Drag Washer	.15	23	Shaft Detent Spring	.15	39	Handle Retainer Screw	1.50
6	Spool Spinkle	3.30	24	Shaft Detent Bail	.15	40	Dust Cap	.30
7	Axle	2.30	25	Housing	8.75	41	Right Side Plate	1.75
8	Rotor	6.00	26	Anti Reverse Dog Spring	.25	42	Anti Reverse Lever	.30
9	Bail Wire	3.45	27	Anti Reverse Dog Spacer	.15	43	Lever Screw Lock Washer	.15
10	Trip Lever Cover	.55	28	Anti Reverse Dog	.75	44	Anti Reverse Lever Screw	.15
11	Bail Wire Screw	.55	29	Anti Reverse Dog Screw	.40	45	Trip Lever Screw	.25
12	Cover Screw	.15	30	Pinion Lock	.15	46	Trip Lever	1.60
13	Bail Spring	.20	31	Right Sideplate Screw	.15	47	Trip Lever Spring	.25
14	Fold Latch Spring	.30	32	Drive Gear	1.50	48	Sa-Fold Handle	9.50
15	Bail Fold Latch	.90	33	Oscillation Guide	.75	49	Roller Line Guide	.60
16	Bail Spring Cover	.35	34	Oscillation Guide Pin	.15	50	Line Guide Cap	.30
17	Bail Mount	1.25				59	Trip Cam Screw	.15
18	Bail Mount Cover	.30				60	Trip Cam	.95

Prices and specifications subject to change without notice.