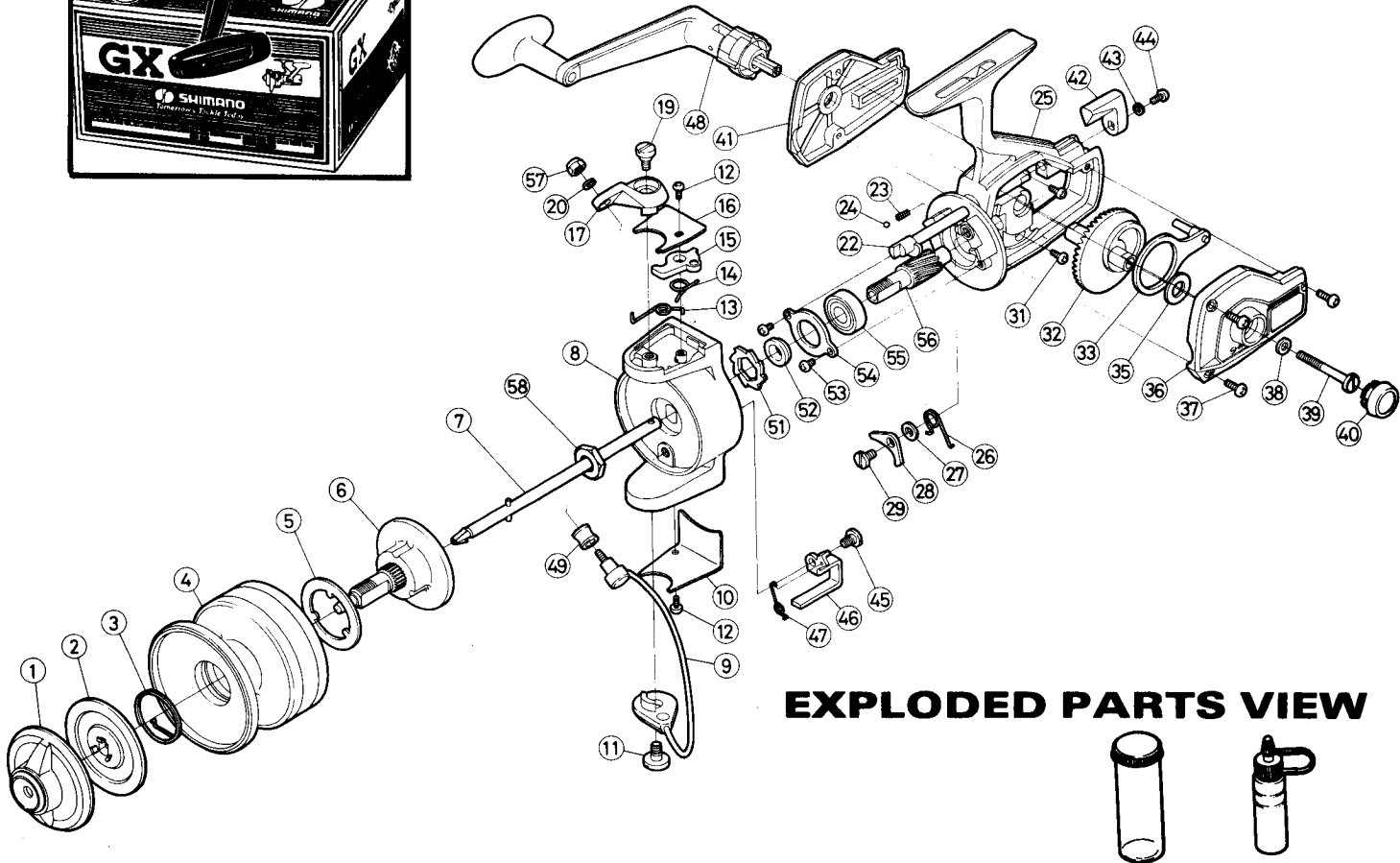
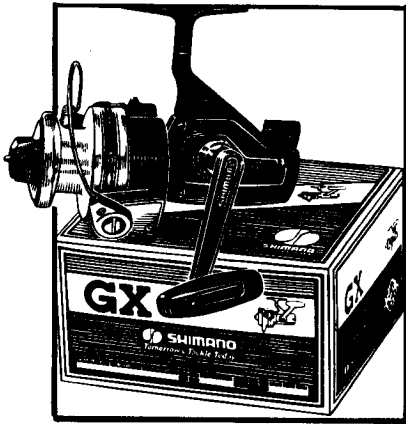




SHIMANO

REPAIR MANUAL NO. GX-300

Shimano American Corp., 205 Jefferson Road
Parsippany, New Jersey 07054



EXPLODED PARTS VIEW

PARTS LIST

PART#	DESCRIPTION	PRICE	PART#	DESCRIPTION	PRICE	PART#	DESCRIPTION	PRICE
1	Drag Adjusting Knob	2.90	22	Anti Reverse Shaft	1.50	40	Dust Cap	.30
2	Drag Disk	.55	23	Shaft Detent Spring	.15	41	Right Side Plate	1.75
3	Click Spring	.35	24	Shaft Detent Ball	.15	42	Anti Reverse Lever	.30
4	Spool	12.75	25	Housing	8.90	43	Anti Reverse Lever Lock Washer	.15
5	Base Drag Washer	.15	26	Anti Reverse Dog Spring	.25	44	Anti Reverse Lever Screw	.15
6	Spindle	3.45	27	Anti Reverse Dog Spacer	.15	45	Trip Lever Screw	.25
7	Axle	2.45	28	Anti Reverse Dog	.90	46	Trip Lever	1.60
8	Rotor	7.00	29	Anti Reverse Dog Screw	.40	47	Trip Lever Spring	.25
9	Bail Wire	3.90	31	Right Side Plate Screw	.15	48	Sa-Fold Handle	9.75
10	Trip Lever Cover	.55	32	Drive Gear	1.75	49	Roller Line Guide	.60
11	Bail Wire Screw	.55	33	Oscillation Guide	1.60	51	Anti Reverse Ratchet	.70
12	Cover Screw	.15	35	Thrust Washer	.15	52	Ratchet Spacer	.40
13	Bail Spring	.25	36	Left Side Plate	1.75	53	Bearing Retainer Screw	.15
14	Fold Latch Spring	.30	37	Left Side Plate Screw	.15	54	Bearing Retainer	.40
15	Bail Fold Latch	1.10	38	Handle Screw Washer	.15	55	Ball Bearing	7.00
16	Bail Spring Cover	.35	39	Handle Retainer Screw	1.50	56	Pinion Gear	2.60
17	Bail Mount	2.75				57	Bail Wire Nut	.25
19	Bail Mount Screw	.30				58	Rotor Nut	.25
20	Bail Nut Lock Washer	.15						

Prices and specifications subject to change without notice.