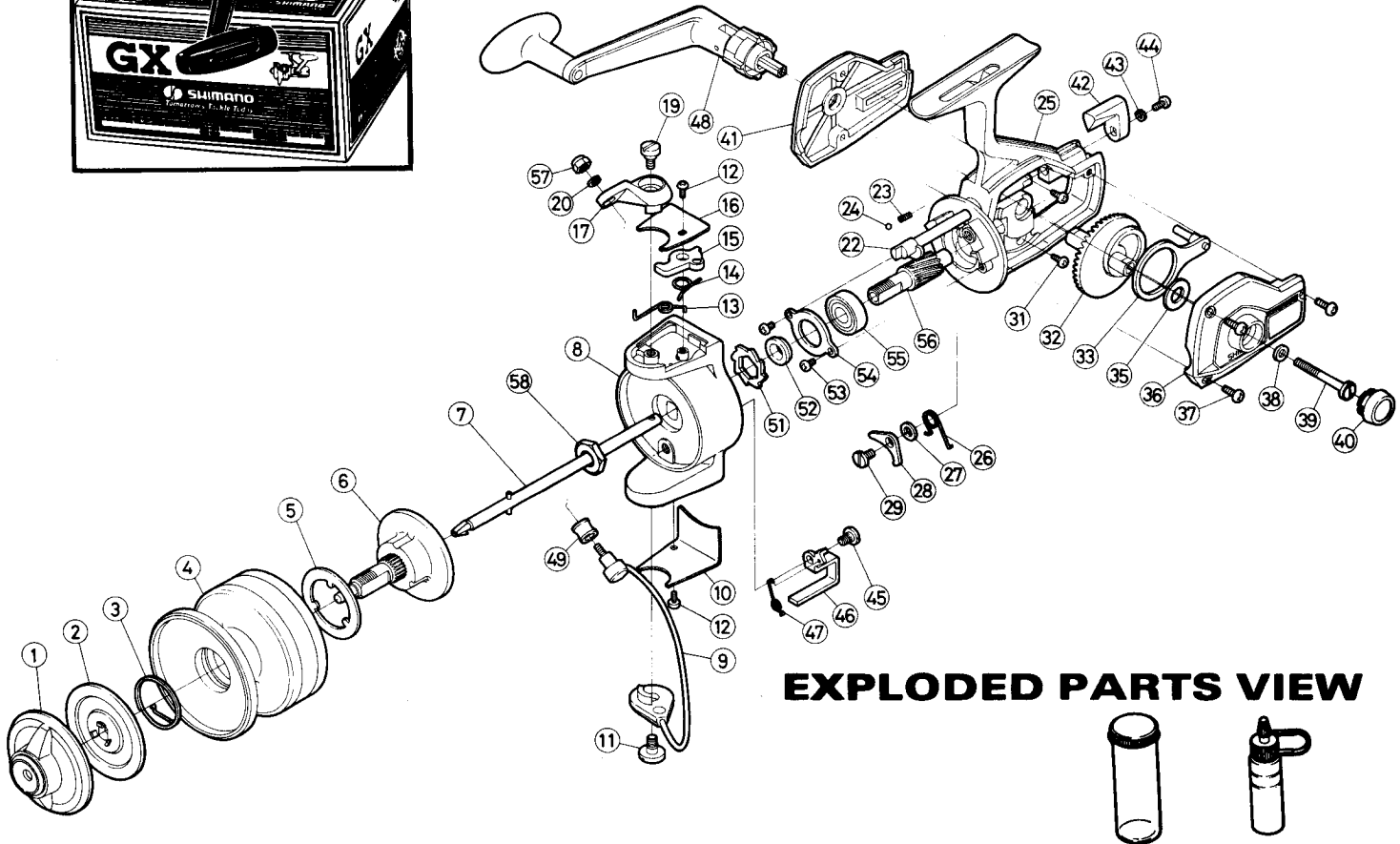
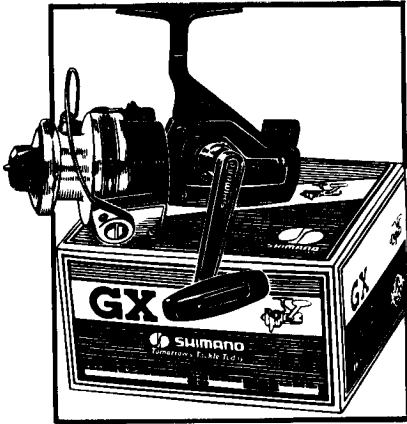




SHIMANO

REPAIR MANUAL NO. GX-400

Shimano American Corp., 205 Jefferson Road
Parsippany, New Jersey 07054



EXPLODED PARTS VIEW

PARTS LIST

PART#	DESCRIPTION	PRICE	PART #	DESCRIPTION	PRICE	PART#	DESCRIPTION	PRICE
1	Drag Adjusting Knob	2.90	20	Bail Nut Lock Washer	.15	40	Dust Cap	.30
2	Drag Disk	.55	22	Anti Reverse Shaft	1.50	41	Right Side Plate	1.75
3	Click Spring	.35	23	Shaft Detent Spring	.15	42	Anti Reverse Lever	.30
4	Spool	13.60	24	Shaft Detent Ball	.15	43	Anti Reverse Lock Washer	.15
5	Base Drag Washer	.15	25	Housing	8.90	44	Anti Reverse Lever Screw	.15
6	Spindle	3.45	26	Anti Reverse Dog Spring	.25	45	Trip Lever Screw	.25
7	Axle	2.45	27	Anti Reverse Dog Spacer	.15	46	Trip Lever	1.60
8	Rotor	7.65	28	Anti Reverse Dog	.90	47	Trip Lever Spring	.25
9	Bail Wire	3.90	29	Anti Reverse Dog Screw	.40	48	Sa-Fold Handle	9.75
10	Trip Lever Cover	.55	31	Right Side Plate Screw	.15	49	Roller Line Guide	.60
11	Bail Wire Screw	.55	32	Drive Gear	1.75	51	Anti Reverse Ratchet	.70
12	Cover Screw	.15	33	Oscillation Guide	1.60	52	Ratchet Spacer	.40
13	Bail Spring	.25	35	Thrust Washer	.15	53	Bearing Retainer Screw	.15
14	Fold Latch Spring	.30	36	Left Side Plate	1.75	54	Bearing Retainer	.40
15	Bail Fold Latch	1.10	37	Left Side Plate Screw	.15	55	Ball Bearing	7.00
16	Bail Spring Cover	.35	38	Handle Screw Washer	.15	56	Pinion Gear	2.60
17	Bail Mount	2.75	39	Handle Retainer Screw	1.50	57	Bail Wire Nut	.25
19	Bail Mount Screw	.30				58	Rotor Nut	.25

Prices and specifications subject to change without notice.