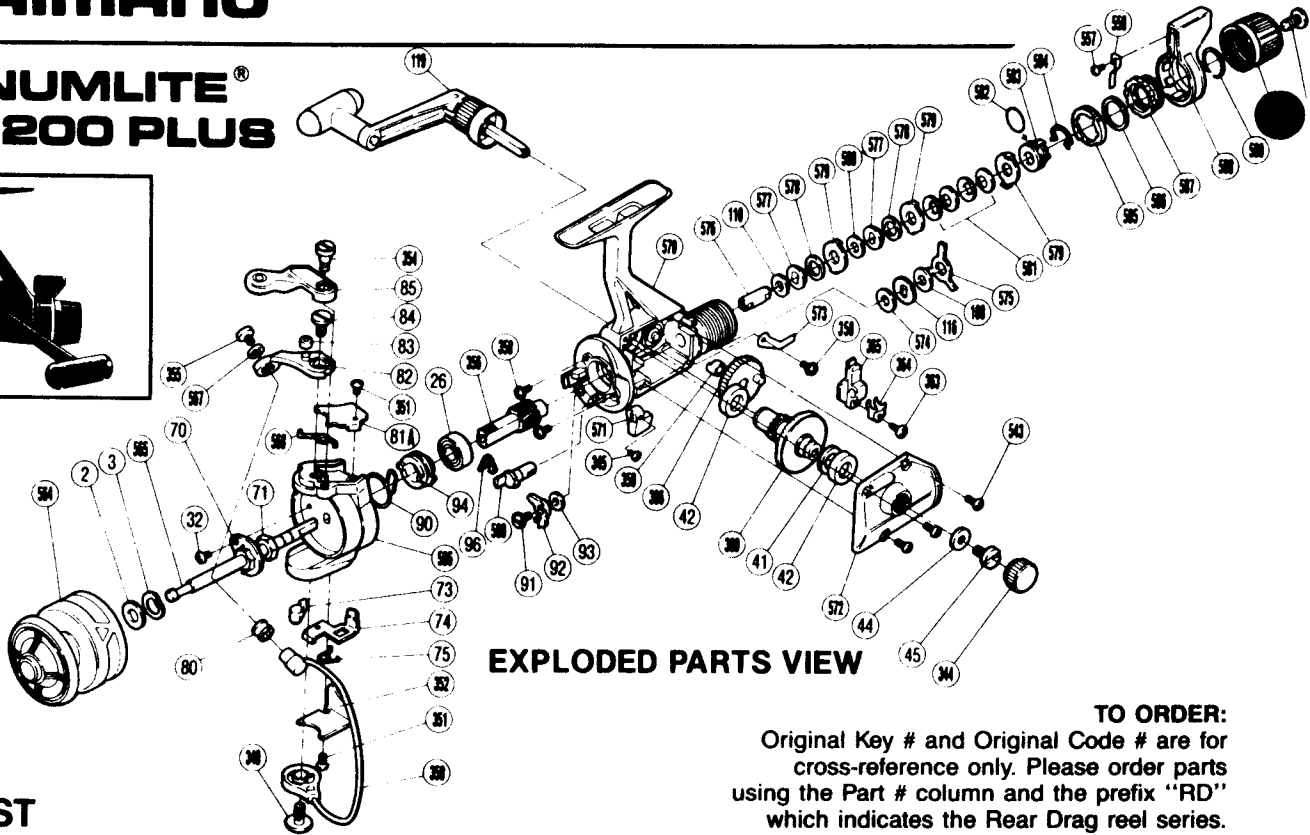
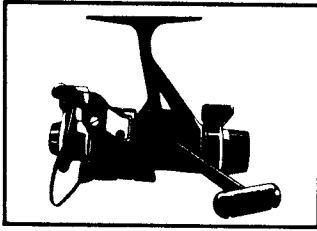


MAGNUMLITE® GT-X1200 PLUS



EXPLODED PARTS VIEW

PARTS LIST

TO ORDER:
Original Key # and Original Code # are for cross-reference only. Please order parts using the Part # column and the prefix "RD" which indicates the Rear Drag reel series.

ORIGINAL PART #	ORIGINAL KEY #	ORIGINAL CODE #	DESCRIPTION	ORIGINAL PART #	ORIGINAL KEY #	ORIGINAL CODE #	DESCRIPTION
564.	1.	6-0209 31212S	Spool Assembly	366.	40.	6-0449 27220S	Oscillating Gear Assembly
2.	2.	7-0217 26100S	Spool Washer	42.	41.	7-0617 26100S	Drive Gear Bushing
3.	3.	7-2101 06100S	Tension Spring	360.	42.	7-0408 29220S	Drive Gear
565.	4.	6-0219 31212S	Main Shaft Assembly	41.	43.	7-0446 01100S	Drive Gear Washer
32.	5.	7-0014 30100S	Nut Lock Screw	572.	44.	6-0609 32200S	Side Cover
70.	6.	7-0360 26200S	Rotor Nut Lock Plate	44.	45.	7-0725 05500S	Handle Lock Washer
71.	7.	7-0311 01100S	Rotor Nut	45.	46.	7-0710 05100S	Handle Lock Screw
566.	8.	7-0301 29221S	Rotor	344.	47.	7-0453 26120S	Handle Screw Cap
73.	9.	7-0355 21200S	Bail Trip Slide Cam	573.	48.	7-0122 32200S	Drag Click
74.	10.	7-0336 21700S	Bail Trip Lever	365.	49.	7-0410 29200S	Oscillating Slider
75.	11.	7-0337 21200S	Lever Spring	364.	50.	7-0538 29200S	Oscillating Slider Retainer
352.	12.	7-0338 29220S	Bail Trip Cover	363.	51.	7-0014 30120S	Slider Retainer Screw
351.	13.	7-0013 30111S	Cover Screw	543.	52.	7-0011 30710S	Side Cover Screw
350.	14.	6-0309 29220S	Bail	574.	53.	7-0139 26210S	Drag Washer "C ₂ "
349.	15.	7-0335 29220S	Bail Trip Cam Screw	116.	54.	7-0113 26200S	Click Gear
80.	16.	7-0304 01100S	Line Roller	108.	55.	7-0139 26200S	Drag Washer "C ₁ "
81A.	17.	7-0307 29220S	Bail Spring Cover	575.	56.	7-0159 32200S	Eared Washer "BF"
82.	18.	7-0303 21700S	Bail Arm	576.	57.	7-0112 32200S	Drag Shaft
83.	19.	7-0356 21700S	Trigger Pin Roller	110.	58.	7-0140 26200S	Drag Washer "D"
84.	20.	7-0306 21700S	Bail Arm Screw	577.	59.	7-0115 29200S	Key Washer "A"
85.	21.	7-0357 21700S	Quick-Fire Trigger	578.	60.	7-0146 32210S	Drag Washer "F ₂ "
354.	22.	7-0358 29220S	Trigger Screw	579.	61.	7-0116 32200S	Eared Washer "B"
355.	23.	7-0013 40420S	Line Roller Screw	580.	62.	7-0146 32200S	Drag Washer "F ₁ "
567.	24.	7-0316 01110S	Lock Washer	581.	63.	7-0150 32200S	Coned Disc Springs
568.	25.	7-0310 21801S	Bail Spring	582.	64.	7-0160 32200S	"O" Ring
90.	26.	7-0422 21700S	Anti-Reverse Pawl Spring	583.	65.	7-0110 32200S	Pressure Screw
94.	27.	7-0421 21700S	Anti-Reverse Ratchet	584.	66.	7-0149 32200S	Hold Click Spring
26.	28.	7-0402 19300S	Ball Bearing	585.	67.	7-0155 32200S	Lever Click Gear
356.	29.	7-0407 29220S	Pinion Gear	586.	68.	7-0157 32200S	Fightin' Pressure Screw Washer
358.	30.	7-0011 30470S	Bearing Retainer Screw	587.	69.	7-0156 32200S	Fightin' Pressure Screw
96.	31.	7-0426 21200S	Anti-Reverse Cam Spring	557.	70.	7-0010 00110S	Fightin' Drag Click Screw
569.	32.	7-0424 32200S	Anti-Reverse Cam	558.	71.	7-0154 32100S	Fightin' Drag Click
91.	33.	7-0425 21700S	Anti-Reverse Pawl Screw	588.	72.	6-0441 32200S	Fightin' Drag Lever
92.	34.	6-0419 21700S	Anti-Reverse Pawl Assembly	589.	73.	7-0158 32200S	Lever Hold Spring
93.	35.	7-0457 19100S	Anti-Reverse Pawl Spacer	590.	74.	6-0439 30120S	Drag Programmer
570.	36.	6-0409 32200S	Body	591.	75.	7-0013 50410S	Drag Programmer Screw
571.	37.	7-0404 32200S	Anti-Reverse Lever	119.	76.	6-0709 27215S	Handle Assembly
345.	38.	7-0013 00110S	Anti-Reverse Lever Screw				
359.	39.	7-0537 29200S	Oscillating Gear Bushing				