

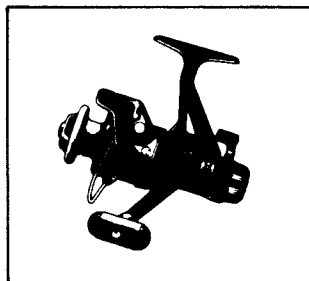
# SHIMANO®

## 1987 REPAIR MANUAL

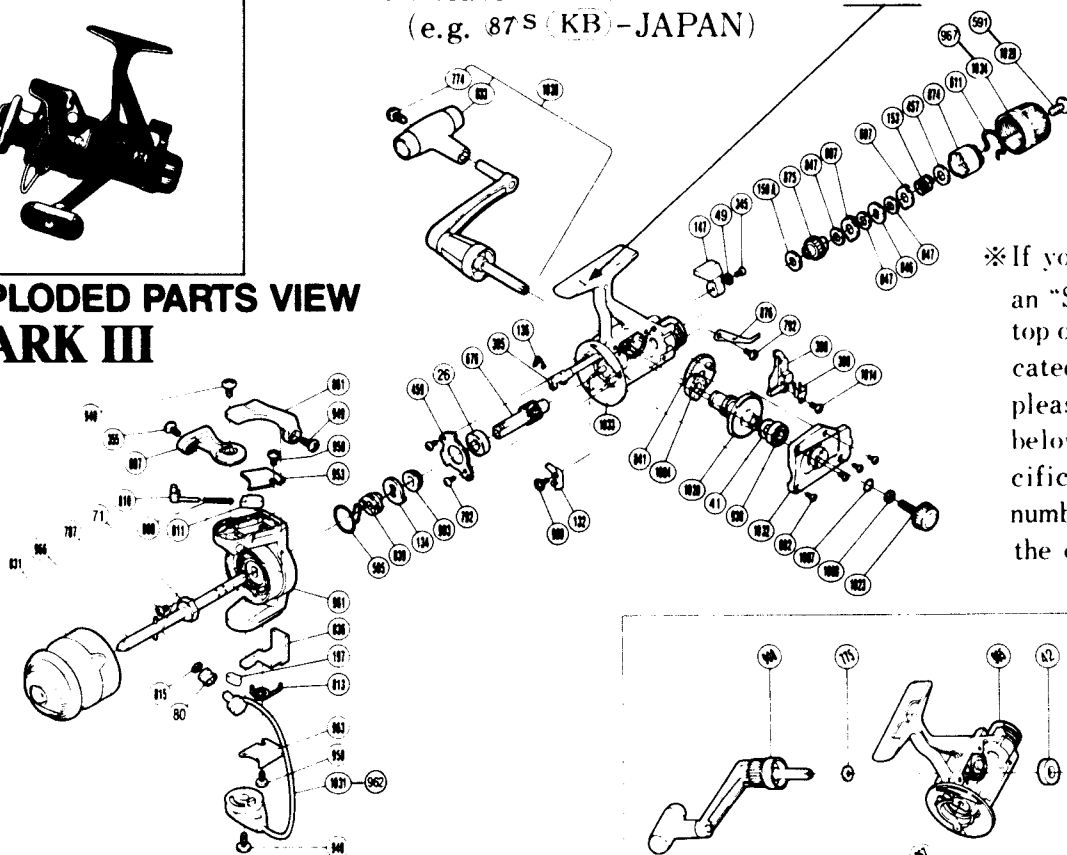
Shimano American Corporation, One Shimano Dr.  
Vine, CA 92718

**TO ORDER:**  
This reel belongs to the "Rear Drag" series.  
Please order parts using the abbreviation  
"RD" and the part number.

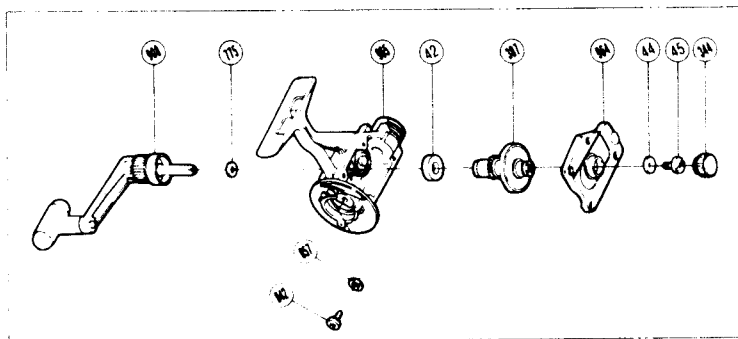
※ Please look here for "S" mark here  
(e.g. 87<sup>S</sup> (KB) - JAPAN)



### EXPLODED PARTS VIEW MARK III



※ If your reel does not have an "S" mark molded on the top of the reel foot as indicated in the exploded view, please use the parts view below to order these specific parts. All other parts numbers are as shown in the exploded view.



### PARTS LIST

#### PART # DESCRIPTION

- 26. Ball Bearing
- 41. Drive Gear Washer
- 42. Bushing
- 44. Handle Lock Washer
- 45. Handle Lock Screw (Originally 796)
- 49. Lock Washer
- 71. Rotor Nut
- 80. Line Roller
- 132. Anti-Reverse Pawl
- 134. Anti-Reverse Ratchet
- 136. Anti-Reverse Cam Spring
- 147. Anti-Reverse Lever
- 150A. Drag Washer "C<sub>2</sub>"
- 153. Drag Coil Spring
- 197. Bail Trip Slide Cam
- 344. Handle Screw Cap
- 345. Anti-Reverse Lever Screw
- 355. Line Roller Screw (orig. 959)
- 363. Slider Retainer Screw
- 385. Anti-Reverse Cam
- 387. Drive Gear
- 389. Oscillating Slider Retainer
- 390. Oscillating Slider
- 457. Drag Spring Washer "A"
- 459. Bearing Retainer
- 591. Drag Knob Screw (original)
- 595. Anti-Reverse Pawl Spring
- 602. Side Cover Screw

#### PART # DESCRIPTION

- 607. Eared Washer "B"
- 611. Hold Click Spring
- 676. Pinion Gear
- 775. Handle Lock Spacer
- 787. Nut Lock Screw
- 792. Multi Purpose Screw
- 807. Bail Arm
- 808. Bail Spring
- 810. Ball Spring Guide A
- 811. Ball Spring Guide B
- 813. Lever Spring
- 815. Line Roller Washer
- 831. Spool Assembly (Universal)
- 836. Ball Trip Lever
- 839. Anti-Reverse Spring Holder
- 841. Oscillating Gear
- 842. Anti-Reverse Pawl Screw
- 846. Key Washer "A"
- 847. Drag Washer "H,"
- 857. Anti-Reverse Pawl Spacer
- 861. Quick-Fire II Trigger
- 874. Pressure Screw
- 875. Drag Shaft
- 876. Drag Click
- 903. Pinion Spacer
- 908. Handle Assembly
- 930. Ball Bearing
- 940. Ball Trip Cam Screw
- 949. Trigger Screw
- 953. Ball Spring Cover

#### PART # DESCRIPTION

- 958. Bail Trip Cover Screw
- 961. Rotor
- 962. Bail Assembly (original)
- 963. Bail Trip Cover
- 964. Side Cover
- 965. Body
- 966. Main Shaft
- 967. Drag Knob (original)
- 999. Anti-Reverse Pawl Screw ("S" Version)
- 1004. Bushing ("S" Version)
- 1007. Lock Washer Retainer ("S" Version)
- 1008. Handle Lock Washer ("S" Version)
- 1014. Slider Retainer Screw ("S" Version)
- 1020. Drive Gear ("S" Version)
- 1023. Handle Screw Cap ("S" Version)
- 1029. Drag Knob Screw ("S" Version)
- 1030. Handle Assembly ("S" Version)
- 1031. Bail Assembly ("S" Version)
- 1032. Side Cover ("S" Version)
- 1033. Body ("S" Version)
- 1034. Drag Knob ("S" Version)

Prices and specifications subject to change without notice.

JUNE 1986