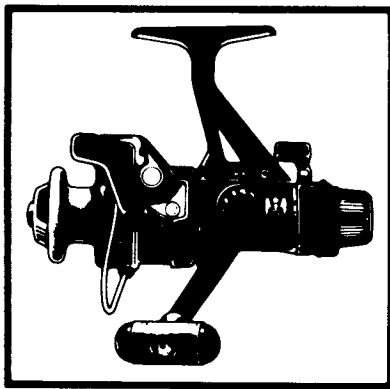


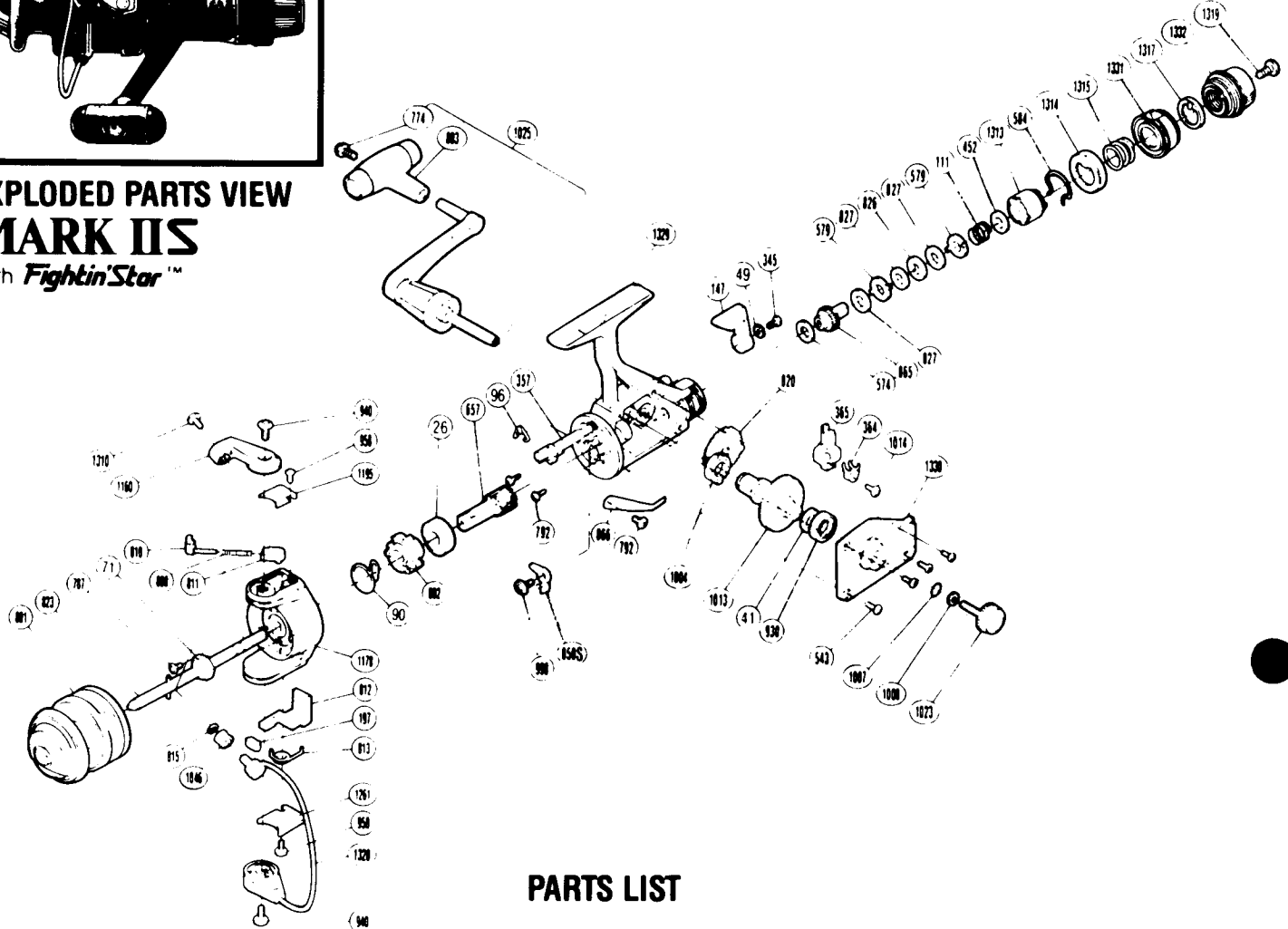
SHIMANO

1988 REPAIR MANUAL

Shimano American Corporation, One Shimano Dr.
Irvine, CA 92718



EXPLODED PARTS VIEW MARK II S with *Fightin' Star*™



PARTS LIST

PART # DESCRIPTION

RD 0026	Ball Bearing
RD 0041	Drive Gear Washer
RD 0049	Lock Washer
RD 0071	Rotor Nut
RD 0090	Anti-Reverse Pawl Spring
RD 0096	Anti-Reverse Cam Spring
RD 0111	Drag (Coil) Spring
RD 0147	Anti-Reverse Lever
RD 0197	Bail Trip Slide Cam
RD 0345	Anti-Reverse Lever Screw
RD 0357	Anti-Reverse Cam
RD 0364	Oscillating Slider Retainer
RD 0365	Oscillating Slider
RD 0452	Drag Spring Washer "A"
RD 0543	Side Cover Screw (B)
RD 0574	Drag Washer "C2" (White)
RD 0579	Eared Washer "B"
RD 0584	Hold Click Spring
RD 0657	Pinion Gear
RD 0774	Handle Knob Screw
RD 0787	Nut Lock Screw
RD 0792	Bearing Retainer Screw

PART # DESCRIPTION

RD 0801	Spool Assembly (Universal)
RD 0803	Handle Knob
RD 0808	Bail Spring
RD 0810	Bail Spring Guide A
RD 0811	Bail Spring Guide B
RD 0812	Bail Trip Lever
RD 0813	Lever Spring
RD 0815	Line Roller Washer
RD 0820	Oscillating Gear
RD 0823	Main Shaft
RD 0826	Key Washer "A"
RD 0827	Drag Washer "H1"
RD 0850S	Anti-Reverse Pawl
RD 0865	Drag Shaft
RD 0866	Drag Click
RD 0892	Anti-Reverse Ratchet
RD 0930	Ball Bearing
RD 0940	Bail Trip Cam Screw
RD 0958	Bail Trip Cover Screw
RD 0998	Anti-Reverse Pawl Screw
RD 1004	Bushing A
RD 1007	Lock Washer Retainer

PART # DESCRIPTION

RD 1008	Handle Lock Washer
RD 1013	Drive Gear
RD 1014	Slider Retainer Screw
RD 1023	Handle Screw Cap
RD 1025	Handle Assembly
RD 1046	Sic Ceramic Roller
RD 1160	Bail Arm
RD 1178	Rotor
RD 1195	Bail Spring Cover
RD 1261	Bail Trip Cover
RD 1310	Line Roller Screw
RD 1313	Pressure Screw
RD 1314	Pre-Set Spring Cover
RD 1315	Pre-Set Spring
RD 1317	Pre-Set Cam
RD 1319	Drag Knob Screw
RD 1328	Bail Assembly
RD 1329	Body
RD 1330	Side Cover
RD 1331	Pre-Set Ring
RD 1332	Drag Knob