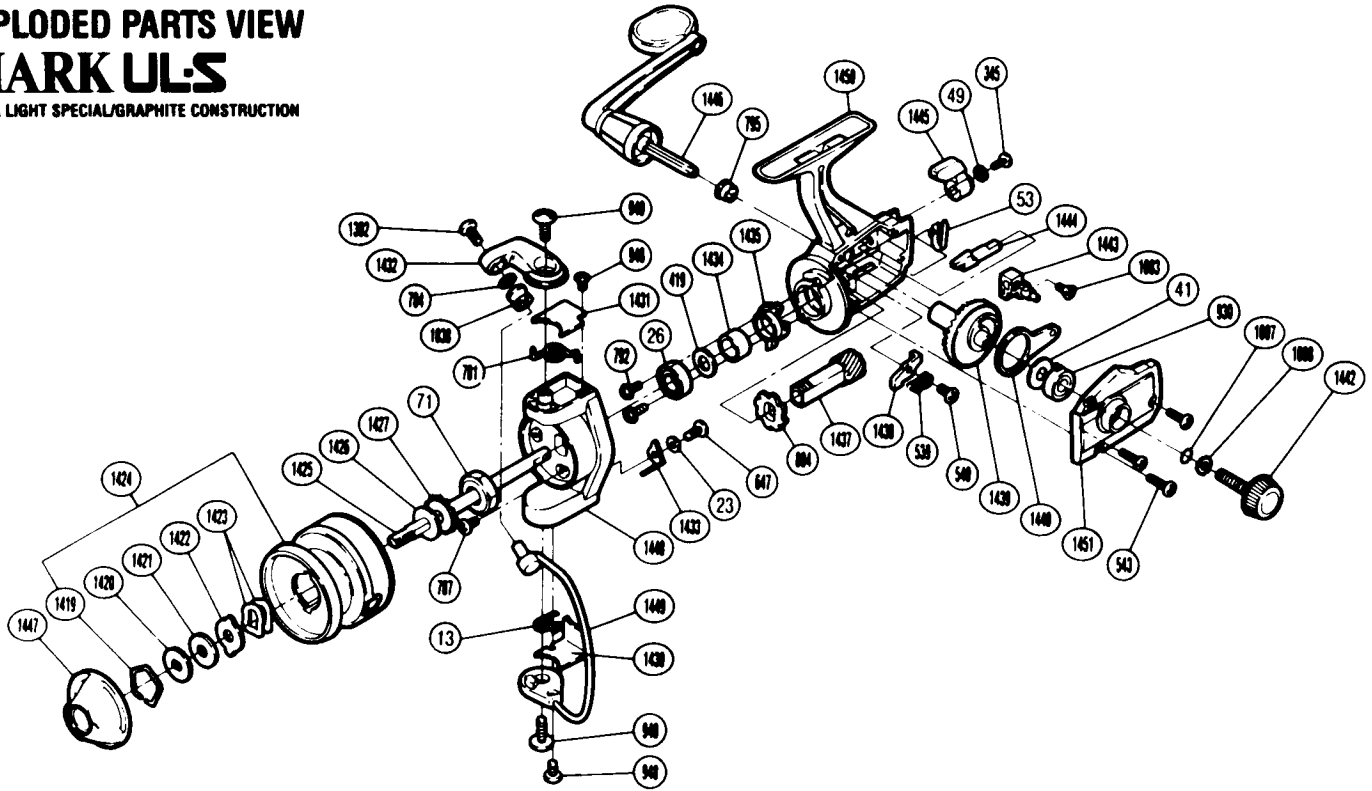


EXPLODED PARTS VIEW
MARK ULS
 ULTRA LIGHT SPECIAL/GRAPHITE CONSTRUCTION

SHIMANO®

1988 REPAIR MANUAL

Shimano American Corporation, One Shimano Dr.
 Irvine, CA 92718



PARTS LIST

PART # DESCRIPTION

- RD 0013 (Trip) Lever Spring
- RD 0023 Trip Lever Spacer
- RD 0026 Ball Bearing
- RD 0041 Drive Gear Washer
- RD 0049 Lock Washer
- RD 0053 Anti-Reverse Cam Spring
- RD 0071 Rotor Nut
- RD 0345 Anti-Reverse Lever Screw
- RD 0419 Bushing Washer (B)
- RD 0539 Anti-Reverse Pawl Spring
- RD 0540 Anti-Reverse Pawl Screw
- RD 0543 Side Cover Screw (B)
- RD 0647 Nut Lock Screw
- RD 0781 Bail Spring
- RD 0784 Line Roller Washer
- RD 0787 Nut Lock Screw
- RD 0792 Bearing Retainer Screw
- RD 0795 Bushing B
- RD 0884 Anti-Reverse Ratchet

PART # DESCRIPTION

- RD 0930 Ball Bearing
- RD 0940 Bail Trip Cam Screw
- RD 0948 Bail Trip Cover Screw
- RD 1007 Lock Washer Retainer
- RD 1008 Handle Lock Washer
- RD 1038 Sic Ceramic Roller
- RD 1083 Slider Retainer Screw
- RD 1302 Line Roller Screw
- RD 1419 Drag Washers Retainer
- RD 1420 Key Washer
- RD 1421 Drag Washer
- RD 1422 Eared Washer
- RD 1423 Drag Spring
- RD 1424 Spool Assembly
- RD 1425 Main Shaft
- RD 1426 Spool Washer
- RD 1427 Spool Support
- RD 1430 Bail Trip Cover
- RD 1431 Bail Spring Cover

PART # DESCRIPTION

- RD 1432 Bail Arm
- RD 1433 Bail Trip Lever
- RD 1434 Pinion Spacer
- RD 1435 Anti-Reverse Lock Out
- RD 1437 Pinion Gear
- RD 1438 Anti-Reverse Pawl
- RD 1439 Drive Gear
- RD 1440 Oscillating Arm
- RD 1442 Handle Screw Cap
- RD 1443 Oscillating Block
- RD 1444 Anti-Reverse Cam
- RD 1445 Anti-Reverse Lever
- RD 1446 Handle Assembly
- RD 1447 Drag Knob
- RD 1448 Rotor
- RD 1449 Bail Assembly
- RD 1450 Body
- RD 1451 Side Cover

Prices and specifications subject to change without notice.

OCTOBER, 1987