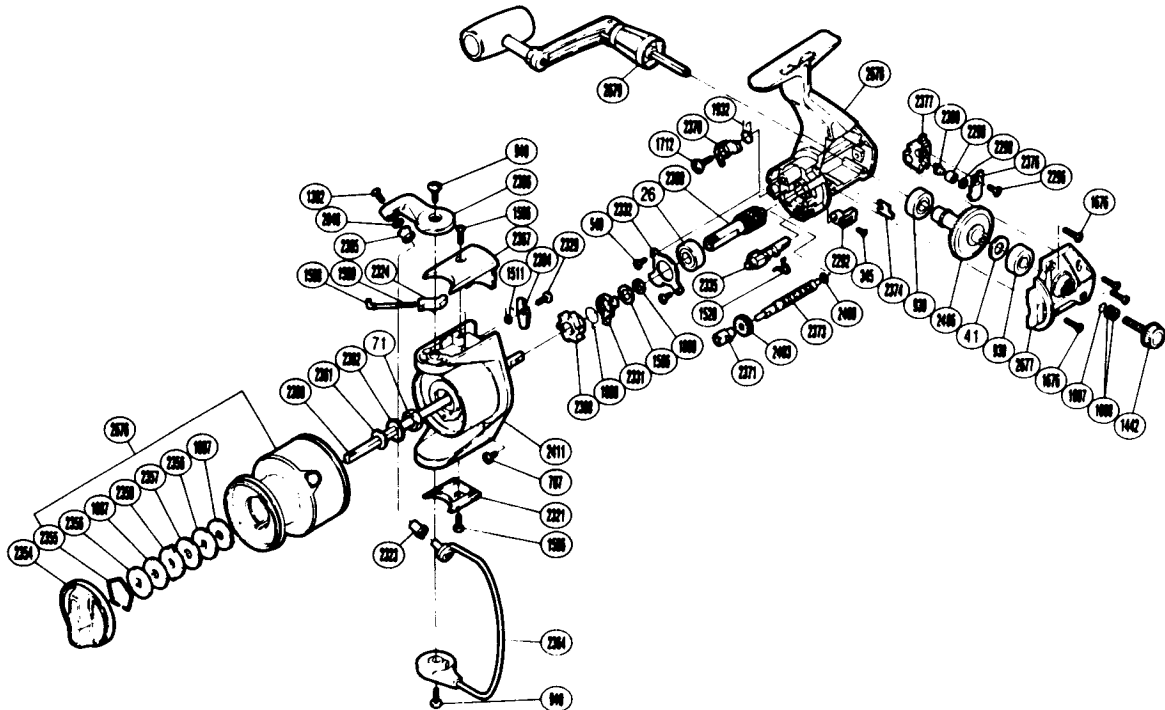


EXPLODED PARTS VIEW
SBA 8~12#

SHIMANO®

1990 REPAIR MANUAL

Shimano American Corporation, One Shimano Dr.
Irvine, CA 92718



**TO ORDER: USE RD PREFIX
WITH PART NUMBER**

PARTS LIST

RD #	DESCRIPTION	RD #	DESCRIPTION	RD #	DESCRIPTION
0026	Ball Bearing	1890	Bushing Washer	2362	Spool Support
0041	Drive Gear Washer	1932	Anti-Reverse Pawl Spring	2364	Bail Assembly
0071	Rotor Nut	2048	Line Roller Washer	2365	Line Roller
0345	Anti-Reverse Lever Screw	2292	Anti-Reverse Lever	2366	Bail Arm
0540	Anti-Reverse Pawl Screw	2296	Slider Retainer Screw	2367	Bail Spring Cover
0787	Nut Lock Screw	2298	Spacer	2368	Anti-Reverse Ratchet
0930	Ball Bearing	2299	Oscillating Slider Bushing	2370	Anti-Reverse Pawl
0940	Bail Trip Cam Screw	2300	Oscillating Pawl	2371	Worm Bearing
1007	Lock Washer Retainer	2321	Rotor Side Cover	2373	Worm Shaft
1008	Handle Lock Washer	2323	Line Roller Bushing	2374	Worm Shaft Retainer
1087	Drag Washer 1	2324	Bail Spring Guide [B]	2376	Oscillating Pawl Cover
1302	Line Roller Screw	2329	Bail Trip Lever Screw	2377	Oscillating Slider
1442	Handle Screw Cap	2331	Anti-Reverse Lock Out	2394	Bail Trip Lever
1506	Bail Spring Cover Screw	2332	Bearing Retainer	2399	Pinion Gear
1508	Bail Spring Guide A	2335	Anti-Reverse Cam	2403	Idle Gear
1509	Bail Spring	2354	Drag Knob	2406	Drive Gear
1511	Lever Spring	2355	Drag Washers Retainer	2409	Worm Shaft Spacer
1520	Anti-Reverse Cam Spring	2356	Key Washer	2411	Rotor
1596	Bushing Washer	2357	Drag Washer 2	2676	Spool Assembly
1676	Side Cover Screw	2358	Eared Washer	2677	Side Cover
1712	Anti-Reverse Pawl Screw	2360	Main Shaft	2678	Body
1888	Anti-Reverse Lock Out Spring	2361	Spool Washer	2679	Handle Assembly

Prices and specifications subject to change without notice.