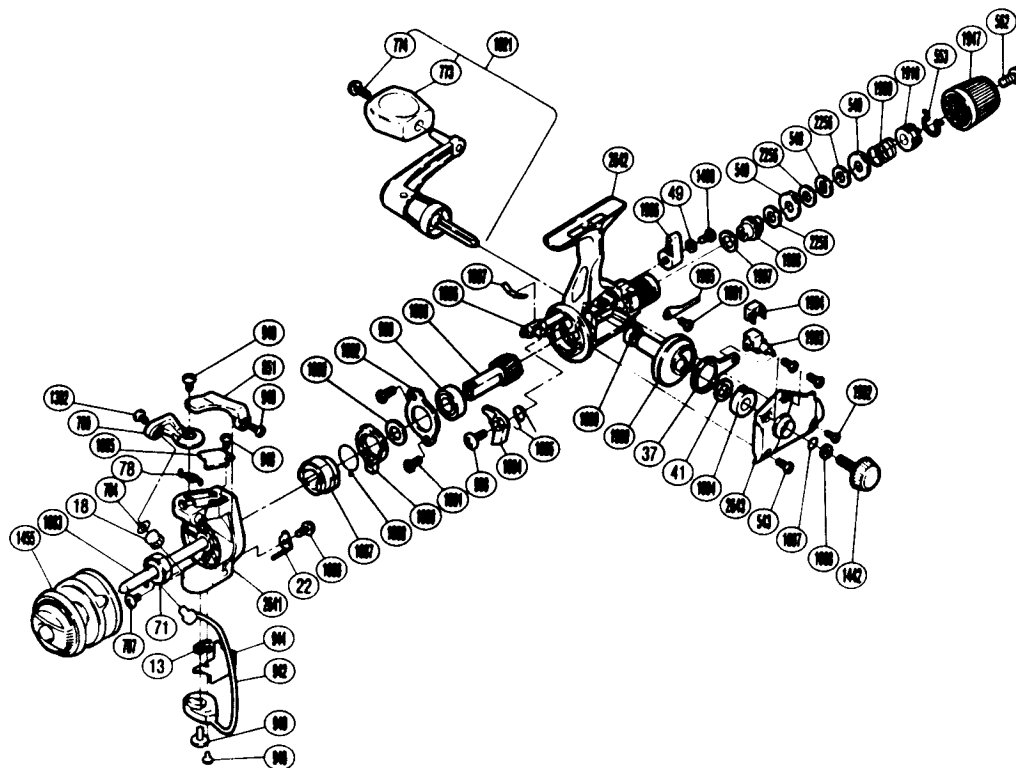


EXPLODED PARTS VIEW
SG 2-6

SHIMANO®

1990 REPAIR MANUAL

Shimano American Corporation, One Shimano Dr.
Irvine, CA 92718



**TO ORDER: USE RD PREFIX
WITH PART NUMBER**

PARTS LIST

RD #	DESCRIPTION	RD #	DESCRIPTION	RD #	DESCRIPTION
0013	[Trip] Lever Spring	0940	Bail Trip Cam Screw	1890	Bushing Washer
0018	Line Roller	0942	Bail Assembly	1891	Multi Purpose Screw
0022	[Bail] Trip Lever	0944	Bail Trip Cover	1892	Bearing Retainer
0037	Oscillating Arm	0948	Bail Trip Cover Screw	1893	Pinion Gear
0041	Drive Gear Washer	0949	Trigger Screw	1894	Anti-Reverse Pawl
0049	Lock Washer	0998	Anti-Reverse Pawl Screw	1895	Anti-Reverse Pawl Spring
0071	Rotor Nut	1004	Bushing A	1896	Anti-Reverse Cam
0543	Side Cover Screw (B)	1007	Lock Washer Retainer	1897	Anti-Reverse Cam Spring
0548	Key Washer "A"	1008	Handle Lock Washer	1899	Bushing B
0549	Eared Washer "B"	1021	Handle Assembly	1900	Drive Gear
0553	Hold Click Spring	1302	Line Roller Screw	1902	Side Cover Screw (B)
0562	Drag Programmer Screw	1442	Handle Screw Cap	1903	Oscillating Block
0773	Handle Knob	1455	Spool Assembly	1904	Oscillating Block Retainer
0774	Handle Knob Screw	1490	Anti-Reverse Lever Screw	1905	Drag Click
0780	Bail Arm	1883	Main Shaft	1906	Anti-Reverse Lever
0781	Bail Spring	1885	Bail Spring Cover	1907	Drag Washer "C"
0784	Line Roller Washer	1886	Trip Lever Screw	1908	Drag Shaft
0787	Nut Lock Screw	1887	Anti-Reverse Ratchet	1909	Drag Coil Spring
0851	Quick-Fire II Trigger	1888	Anti-Reverse Lock Out Spring	1910	Pressure Screw
0930	Ball Bearing	1889	Anti-Reverse Lock Out	1947	Drag Knob

Prices and specifications subject to change without notice.

1/1990