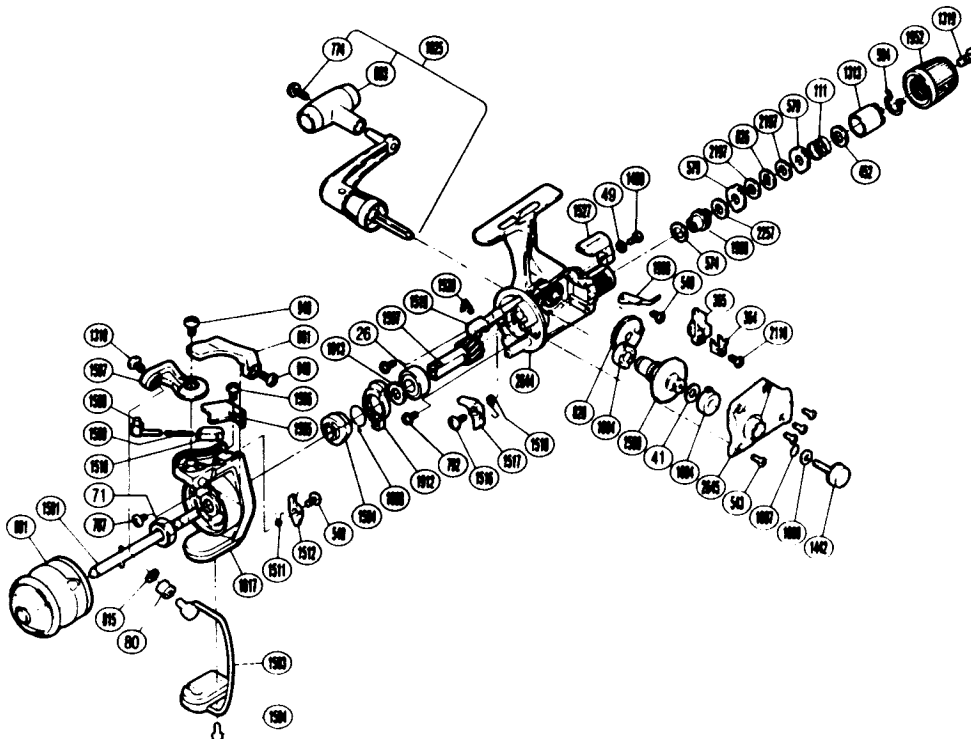


# EXPLODED PARTS VIEW SG 4-8

# SHIMANO®

## 1990 REPAIR MANUAL

Shimano American Corporation, One Shimano Dr.  
Irvine, CA 92718



**TO ORDER: USE RD PREFIX  
WITH PART NUMBER**

### PARTS LIST

RD #	DESCRIPTION	RD #	DESCRIPTION	RD #	DESCRIPTION
0026	Ball Bearing	0861	Quick-Fire II Trigger	1511	Lever Spring
0041	Drive Gear Washer	0940	Bail Trip Cam Screw	1512	Bail Trip Lever
0049	Lock Washer	0949	Trigger Screw	1516	Anti-Reverse Pawl Screw
0071	Rotor Nut	1004	Bushing A	1517	Anti-Reverse Pawl
0080	Line Roller	1007	Lock Washer Retainer	1518	Anti-Reverse Pawl Spring
0111	Drag (Coil) Spring	1008	Handle Lock Washer	1519	Anti-Reverse Cam
0364	Oscillating Slider Retainer	1025	Handle Assembly	1520	Anti-Reverse Cam Spring
0365	Oscillating Slider	1310	Line Roller Screw	1527	Anti-Reverse Lever
0452	Drag Spring Washer "A"	1313	Pressure Screw	1594	Anti-Reverse Ratchet
0540	Anti-Reverse Pawl Screw	1319	Drag Knob Screw	1597	Pinion Gear
0543	Side Cover Screw (B)	1442	Handle Screw Cap	1599	Drive Gear
0574	Drag Washer "C2" (White)	1490	Anti-Reverse Lever Screw	1617	Rotor
0579	Eared Washer "B"	1501	Main Shaft	1888	Anti-Reverse Lock Out Spring
0584	Hold Click Spring	1503	Bail Assembly	1912	Anti-Reverse Lock Out
0774	Handle Knob Screw	1504	Bail Hold Cover Screw	1913	Bushing Washer
0787	Nut Lock Screw	1505	Bail Spring Cover	1952	Drag Knob
0792	Bearing Retainer Screw	1506	Bail Spring Cover Screw	1968	Drag Click
0801	Spool Assembly (Universal)	1507	Bail Arm	1969	Drag Shaft
0803	Handle Knob	1508	Bail Spring Guide A	2110	Slider Retainer Screw
0815	Line Roller Washer	1509	Bail Spring	2197	Drag Washer "H3"
0820	Oscillating Gear	1510	Bail Spring Guide B	2257	Drag Washer "H1"

Prices and specifications subject to change without notice.

1/1990