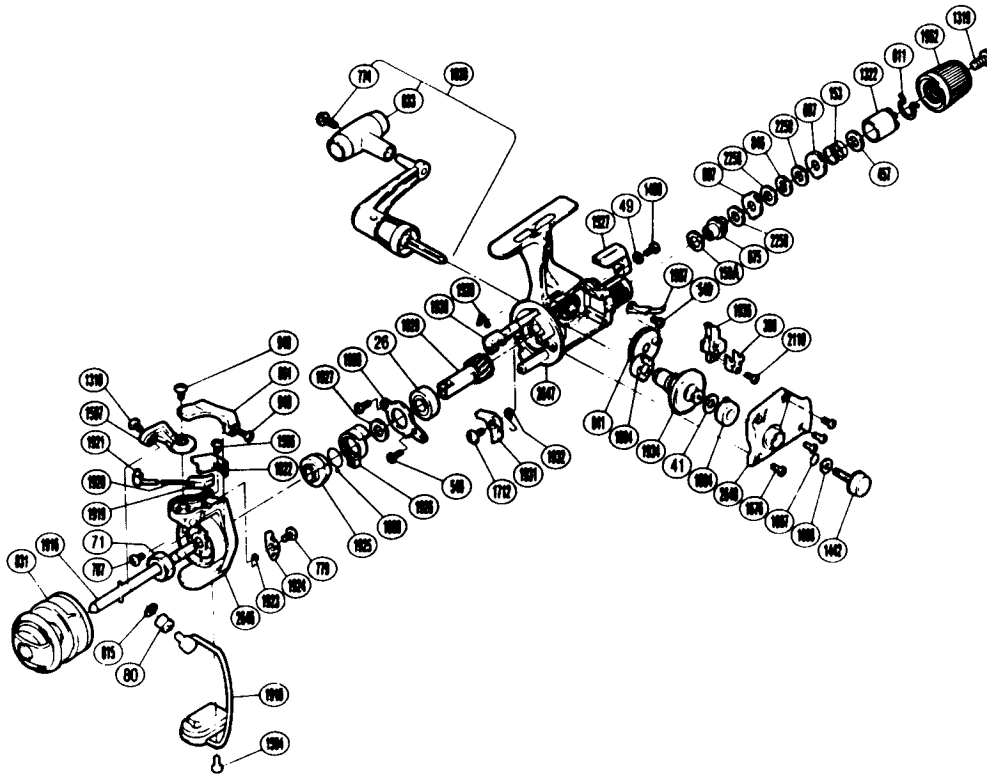


EXPLODED PARTS VIEW
SG 8-12

SHIMANO®

1990 REPAIR MANUAL

Shimano American Corporation, One Shimano Dr.
Irvine, CA 92718



**TO ORDER: USE RD PREFIX
WITH PART NUMBER**

PARTS LIST

RD #	DESCRIPTION	RD #	DESCRIPTION	RD #	DESCRIPTION
0026	Ball Bearing	0875	Drag Shaft	1916	Main Shaft
0041	Drive Gear Washer	0940	Bail Trip Cam Screw	1918	Bail Assembly
0049	Lock Washer	0949	Trigger Screw	1919	Bail Spring Guide B
0071	Rotor Nut	1004	Bushing A	1920	Bail Spring
0080	Line Roller	1007	Lock Washer Retainer	1921	Bail Spring Guide A
0150A	Drag Washer "C2" (White)	1008	Handle Lock Washer	1922	Bail Spring Cover
0153	Drag (Coil) Spring	1030	Handle Assembly	1923	Lever Spring
0389	Oscillating Slider Retainer	1310	Line Roller Screw	1924	Bail Trip Lever
0457	Drag Spring Washer "A"	1319	Drag Knob Screw	1925	Anti-Reverse Ratchet
0540	Anti-Reverse Pawl Screw	1322	Pressure Screw	1926	Anti-Reverse Lock Out
0607	Eared Washer "B"	1442	Handle Screw Cap	1928	Bearing Retainer
0611	Hold Click Spring	1490	Anti-Reverse Lever Screw	1929	Pinion Gear
0774	Handle Knob Screw	1504	Bail Hold Cover Screw	1930	Anti-Reverse Cam
0779	Bail Trip Cam Screw	1516	Anti-Reverse Pawl Screw	1931	Anti-Reverse Pawl
0787	Nut Lock Screw	1517	Anti-Reverse Pawl	1932	Anti-Reverse Pawl Spring
0815	Line Roller Washer	1520	Anti-Reverse Cam Spring	1934	Drive Gear
0831	Spool Assembly (Universal)	1527	Anti-Reverse Lever	1936	Oscillating Slider
0833	Handle Knob	1676	Side Cover Screw	1937	Drag Click
0841	Oscillating Gear	1712	Anti-Reverse Pawl Screw	1962	Drag Knob
0846	Key Washer "A"	1888	Anti-Reverse Lock Out Spring	2110	Slider Retainer Screw
0861	Quick-Fire II Trigger	1913	Bushing Washer	2258	Drag Washer "H1"

Prices and specifications subject to change without notice.

1/1990