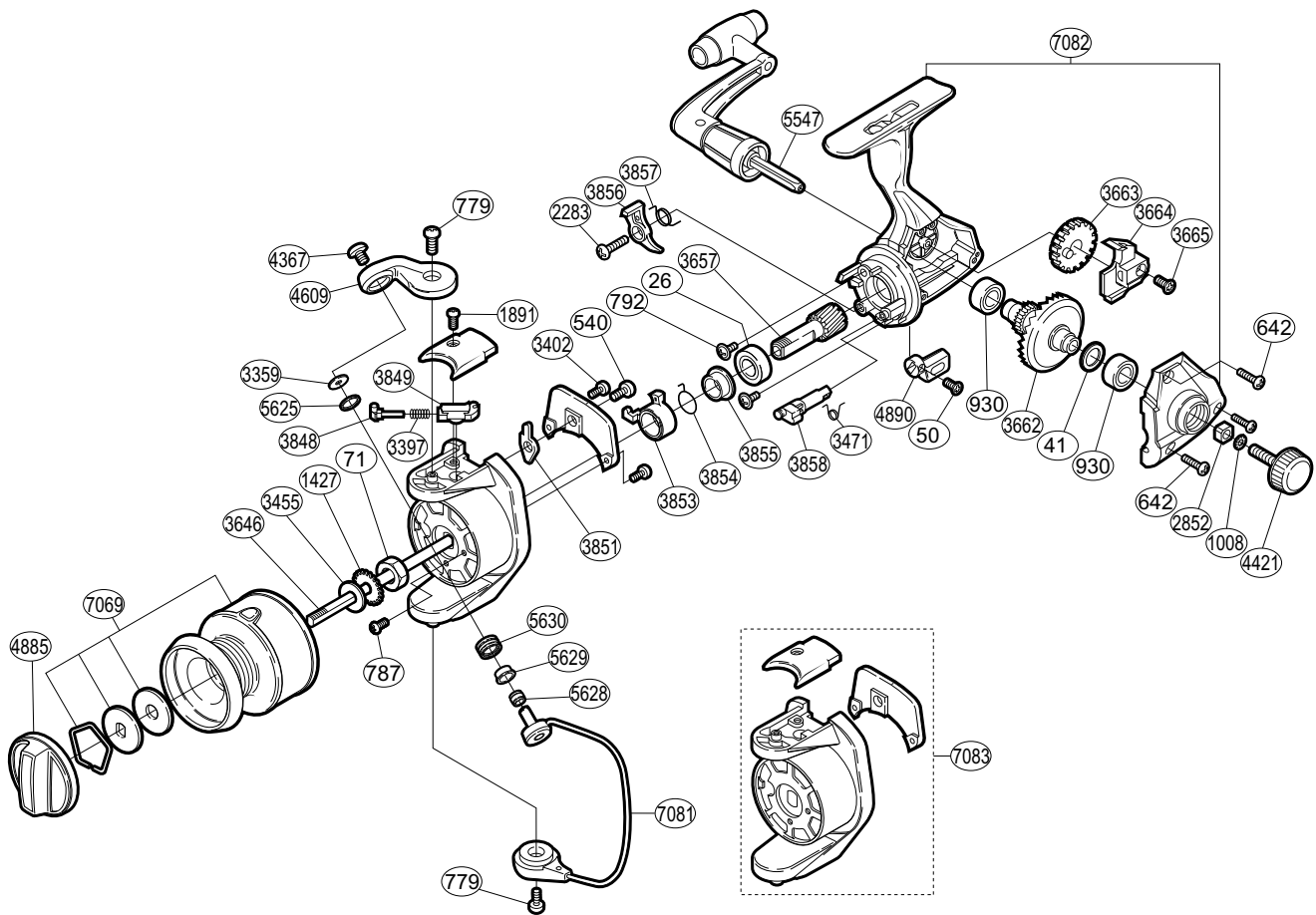


SHIMANO®

SIENNA®

SN-1000FA



| Part No. | Description | Part No. | Description | Part No. | Description |
|----------|--------------------------|----------|------------------------------|----------|---------------------|
| RD 0026 | Ball Bearing | RD 3402 | Cover Screw | RD 3858 | Anti-Reverse Cam |
| RD 0041 | Drive Gear Washer | RD 3455 | Spool Washer | RD 4367 | Line Roller Screw |
| RD 0050 | Anti-Reverse Lever Screw | RD 3471 | Anti-Reverse Cam Spring | RD 4421 | Handle Screw Cap |
| RD 0071 | Rotor Nut | RD 3646 | Main Shaft | RD 4609 | Bail Arm |
| RD 0540 | Bail Trip Lever Screw | RD 3657 | Pinion Gear | RD 4885 | Drag Knob |
| RD 0642 | Side Cover Screw | RD 3662 | Drive Gear | RD 4890 | Anti-Reverse Lever |
| RD 0779 | Multi-Purpose Screw | RD 3663 | Oscillating Gear | RD 5547 | Handle Assembly |
| RD 0787 | Nut Lock Screw | RD 3664 | Oscillating Slider | RD 5625 | Line Roller Spacer |
| RD 0792 | Bearing Retainer Screw | RD 3665 | Slider Retainer Screw | RD 5628 | Line Roller Collar |
| RD 0930 | Ball Bearing | RD 3848 | Bail Spring Guide (A) | RD 5629 | Line Roller Bushing |
| RD 1008 | Handle Lock Washer | RD 3849 | Bail Spring Guide (B) | RD 5630 | Line Roller |
| RD 1427 | Spool Support | RD 3851 | Bail Trip Lever | RD 7069 | Spool Assembly |
| RD 1891 | Bail Spring Cover Screw | RD 3853 | Anti-Reverse Lock Out | RD 7081 | Bail Assembly |
| RD 2283 | Anti-Reverse Pawl Screw | RD 3854 | Anti-Reverse Lock Out Spring | RD 7082 | Body Assembly |
| RD 2852 | Handle Screw Lock | RD 3855 | Lock Out Spring Holder | RD 7083 | Rotor Assembly |
| RD 3359 | Line Roller Washer | RD 3856 | Anti-Reverse Pawl | | |
| RD 3397 | Bail Spring | RD 3857 | Anti-Reverse Pawl Spring | | |